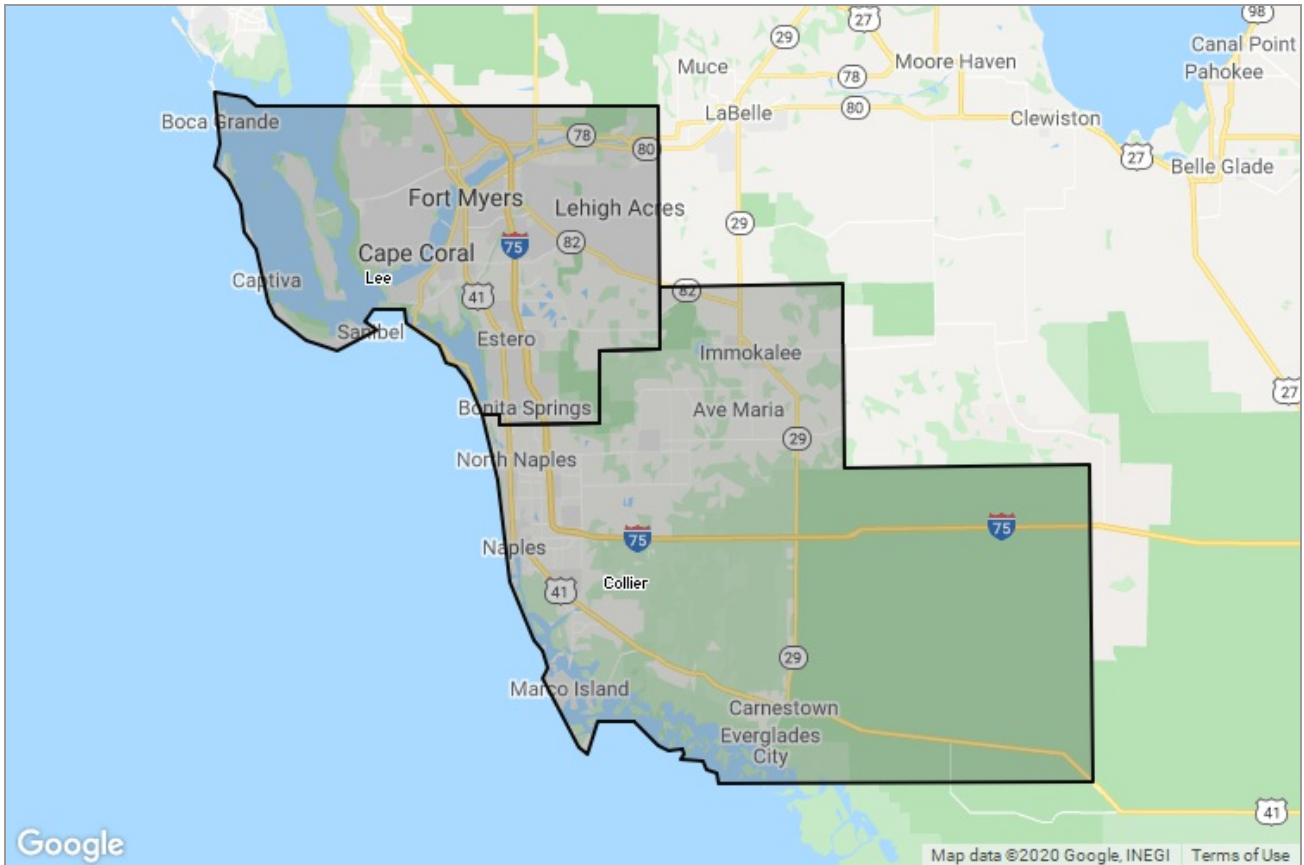




MARKET DATA REPORT

Monthly Market Data Report



Report Characteristics

Report Name:
Monthly Market Data Report

Report Date Range:
3/2019 – 3/2020

Filters Used:
Location

Avg/Med: Avg Only

Include Metrics By: County

Run Date: 04/06/2020

Scheduled: Yes

Presented by

**Bonita Springs-Estero Association of
REALTORS®**

Florida Real Estate License: 251501954

(239) 992-6771

Other: <http://bearflorida.point2agent.com/>

25300 Bernwood Drive
Suite 1
Bonita Springs, FL 34135

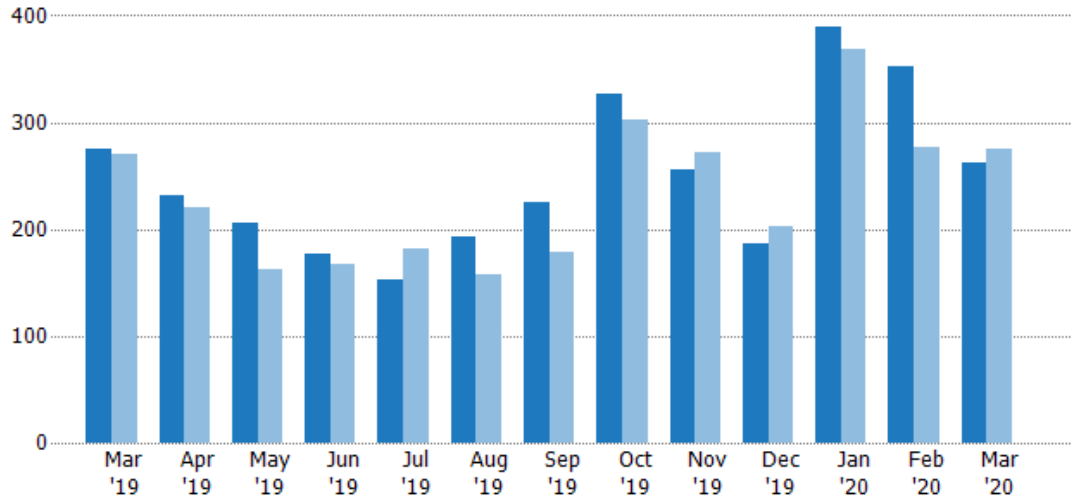
New Listings

The number of new residential listings that were added each month.

Filters Used

County: Collier County, Florida, Lee County, Florida

Month/Year	Count	% Chg.
Mar '20	263	-4.4%
Mar '19	275	1.5%
Mar '18	271	-14.4%



	Mar '19	Apr '19	May '19	Jun '19	Jul '19	Aug '19	Sep '19	Oct '19	Nov '19	Dec '19	Jan '20	Feb '20	Mar '20
Current Year	275	231	206	177	152	193	225	327	256	186	389	352	263
Prior Year	271	221	163	168	182	157	178	302	272	203	368	277	275
Percent Change from Prior Year	1%	5%	26%	5%	-16%	23%	26%	8%	-6%	-8%	6%	27%	-4%

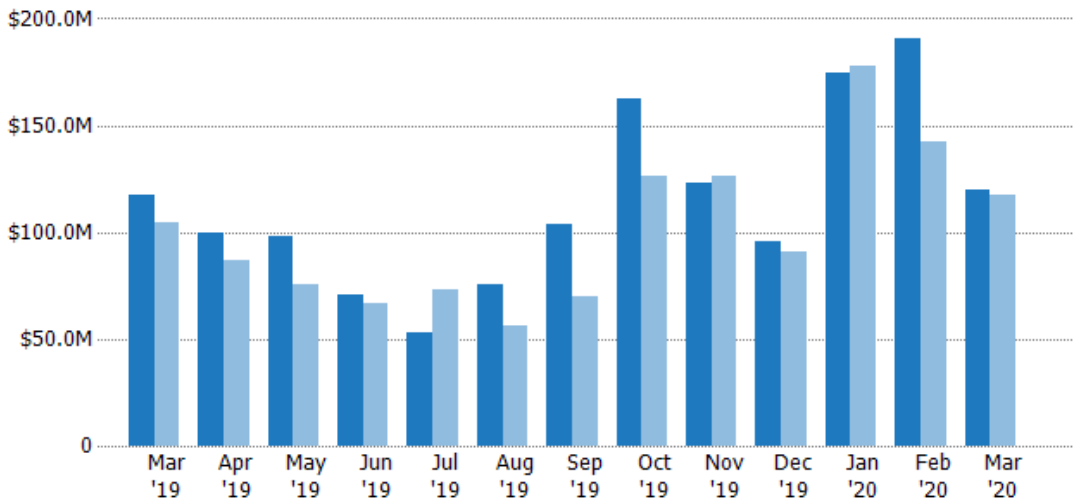
New Listing Volume

The sum of the listing price of residential listings that were added each month.

Filters Used

County: Collier County, Florida, Lee County, Florida

Month/Year	Volume	% Chg.
Mar '20	\$120M	2.5%
Mar '19	\$117M	11.8%
Mar '18	\$105M	-6.5%



	Mar '19	Apr '19	May '19	Jun '19	Jul '19	Aug '19	Sep '19	Oct '19	Nov '19	Dec '19	Jan '20	Feb '20	Mar '20
Current Year	\$117M	\$100M	\$98.5M	\$70.9M	\$53M	\$75.8M	\$103M	\$163M	\$123M	\$95.3M	\$175M	\$191M	\$120M
Prior Year	\$105M	\$86.9M	\$75.3M	\$66.8M	\$73.3M	\$56.6M	\$69.9M	\$126M	\$126M	\$90.7M	\$178M	\$143M	\$117M
Percent Change from Prior Year	12%	15%	31%	6%	-28%	34%	48%	29%	-3%	5%	-2%	34%	2%

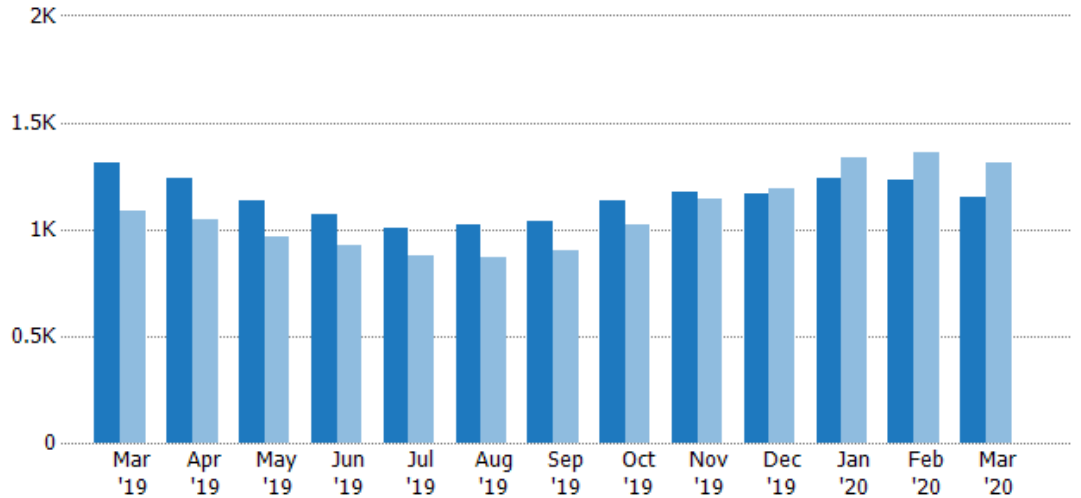
Active Listings

The number of active residential listings at the end of each month.

Filters Used

County: Collier County, Florida, Lee County, Florida

Month/Year	Count	% Chg.
Mar '20	1.15K	-11.8%
Mar '19	1.31K	20%
Mar '18	1.09K	-11.5%



Current Year	1.31K	1.24K	1.13K	1.07K	1K	1.02K	1.04K	1.14K	1.18K	1.16K	1.24K	1.23K	1.15K
Prior Year	1.09K	1.05K	962	923	874	869	900	1.02K	1.14K	1.19K	1.34K	1.36K	1.31K
Percent Change from Prior Year	20%	18%	18%	16%	15%	17%	15%	11%	3%	-2%	-7%	-9%	-12%

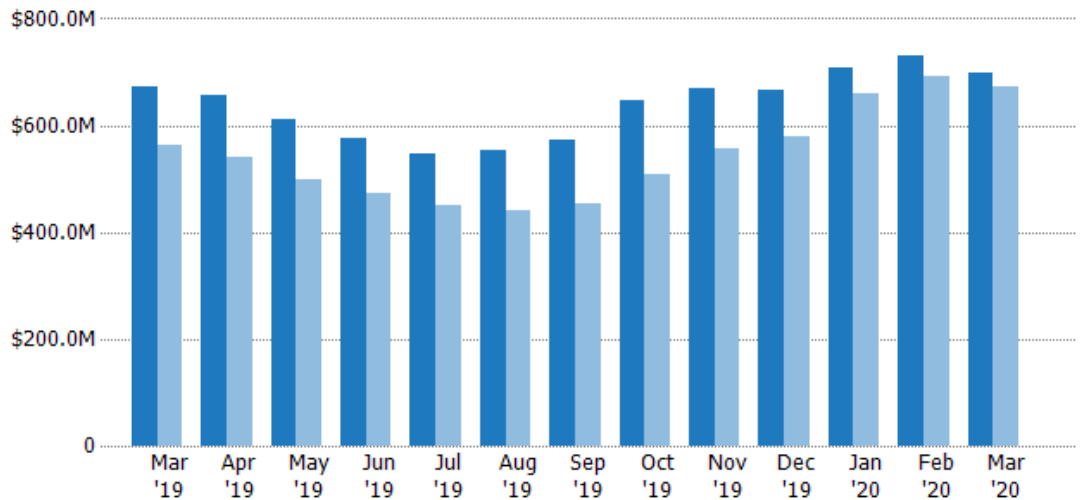
Active Listing Volume

The sum of the listing price of active residential listings at the end of each month.

Filters Used

County: Collier County, Florida, Lee County, Florida

Month/Year	Volume	% Chg.
Mar '20	\$699M	4.2%
Mar '19	\$671M	19.5%
Mar '18	\$561M	-14.9%



Current Year	\$671M	\$657M	\$612M	\$577M	\$547M	\$554M	\$574M	\$647M	\$670M	\$666M	\$707M	\$732M	\$699M
Prior Year	\$561M	\$541M	\$499M	\$472M	\$449M	\$440M	\$453M	\$507M	\$557M	\$580M	\$660M	\$693M	\$671M
Percent Change from Prior Year	20%	22%	23%	22%	22%	26%	27%	28%	20%	15%	7%	6%	4%

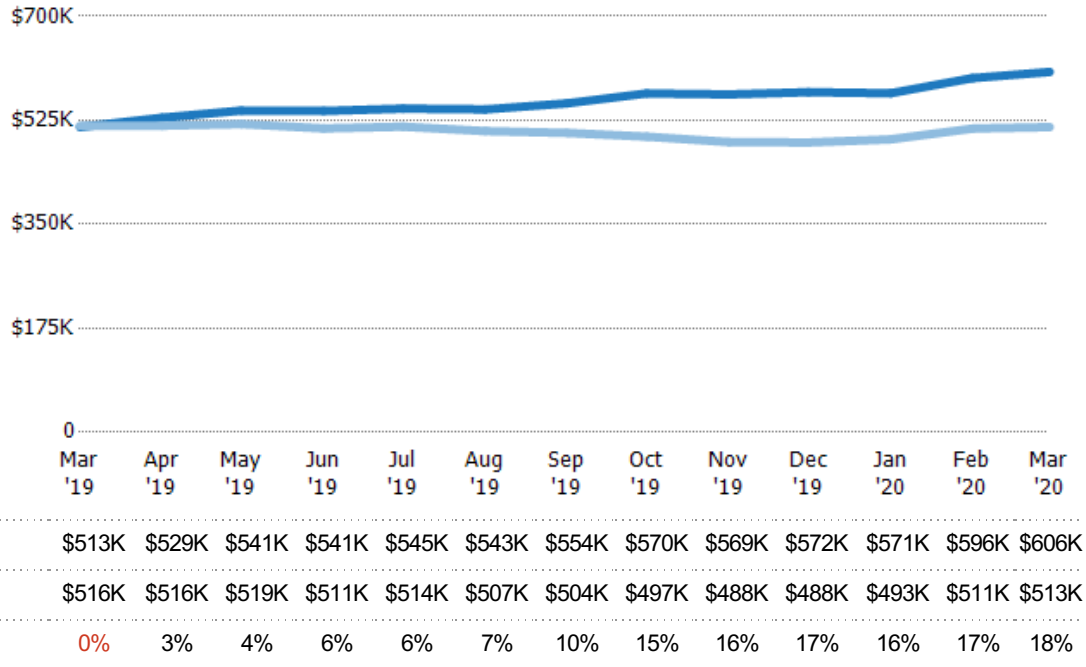
Average Listing Price

The average listing price of active residential listings at the end of each month.

Filters Used

County: Collier County, Florida, Lee County, Florida

Month/Year	Price	% Chg.
Mar '20	\$606K	18.1%
Mar '19	\$513K	-0.4%
Mar '18	\$516K	-3.9%



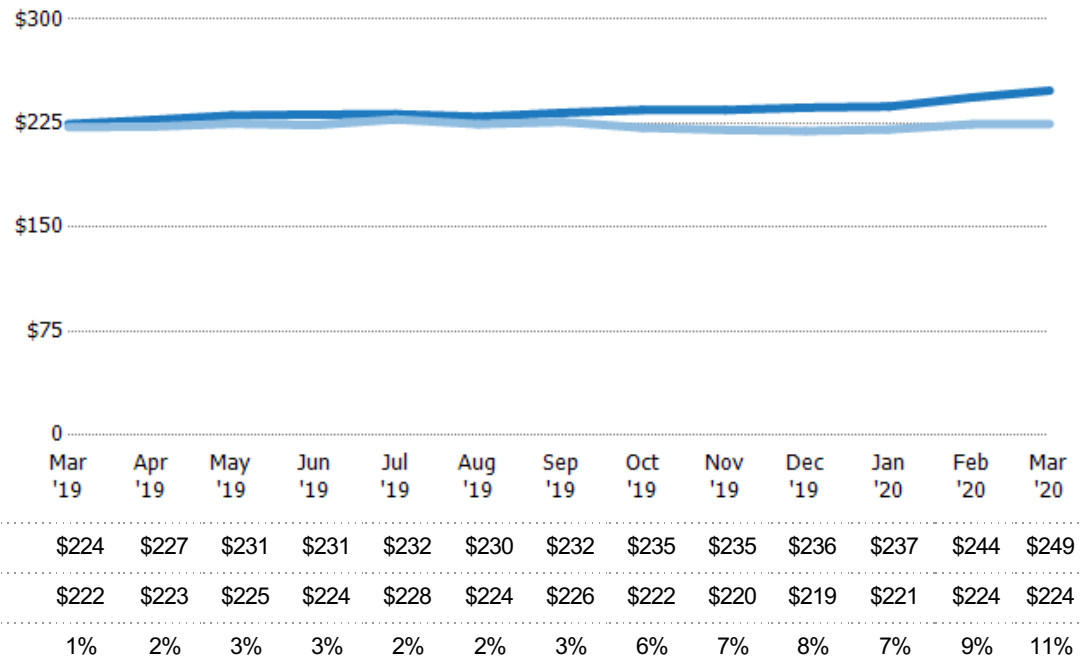
Average Listing Price per Sq Ft

The average of listing prices divided by the living area of homes on market at the end of each month.

Filters Used

County: Collier County, Florida, Lee County, Florida

Month/Year	Price/sq ft	% Chg.
Mar '20	\$249	10.7%
Mar '19	\$224	1%
Mar '18	\$222	-1.7%

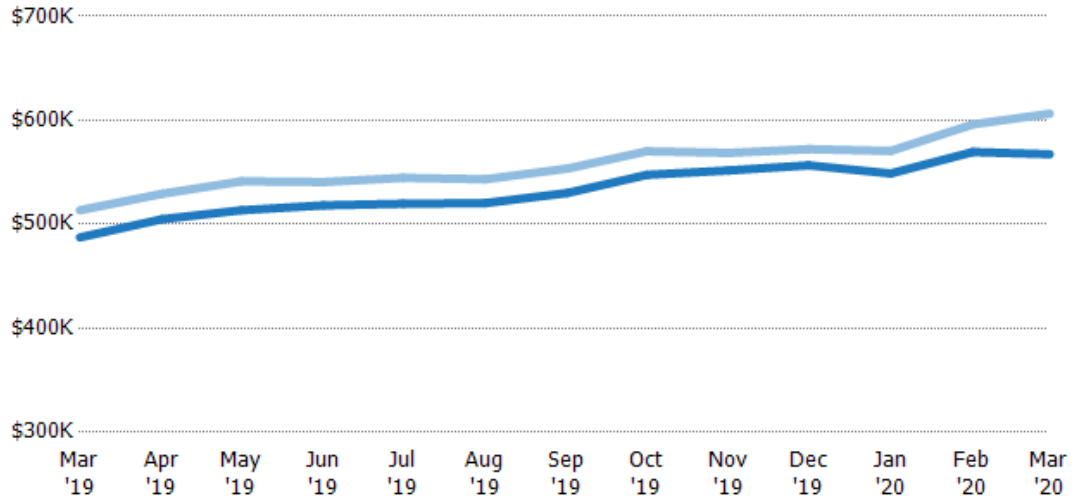


Average Listing Price vs Average Est Value

The average listing price as a percentage of the average AVM or RVM® valuation estimate for active listings each month.

Filters Used

County: Collier County, Florida, Lee County, Florida



	Mar '19	Apr '19	May '19	Jun '19	Jul '19	Aug '19	Sep '19	Oct '19	Nov '19	Dec '19	Jan '20	Feb '20	Mar '20
Avg Est Value	\$487K	\$505K	\$513K	\$518K	\$520K	\$520K	\$530K	\$548K	\$552K	\$557K	\$549K	\$569K	\$567K
Avg Listing Price	\$513K	\$529K	\$541K	\$541K	\$545K	\$543K	\$554K	\$570K	\$569K	\$572K	\$571K	\$596K	\$606K
Avg Listing Price as a % of Avg Est Value	105%	105%	105%	104%	105%	104%	104%	104%	103%	103%	104%	105%	107%

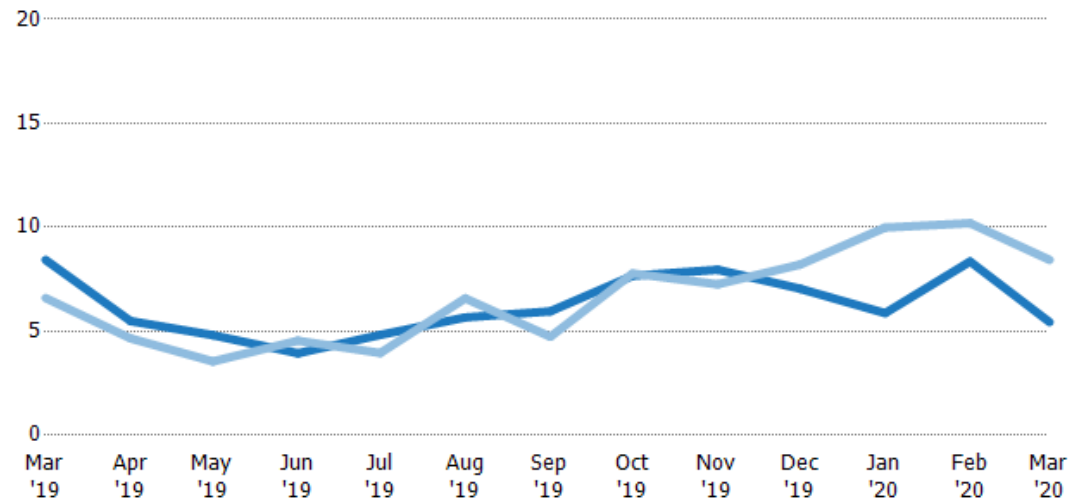
Months of Inventory

The number of months it would take to exhaust active listings at the current sales rate.

Filters Used

County: Collier County, Florida, Lee County, Florida

Month/Year	Months	% Chg.
Mar '20	5.44	-35.5%
Mar '19	8.43	27.8%
Mar '18	6.6	-13.1%



	Mar '19	Apr '19	May '19	Jun '19	Jul '19	Aug '19	Sep '19	Oct '19	Nov '19	Dec '19	Jan '20	Feb '20	Mar '20
Current Year	8.43	5.49	4.81	3.94	4.83	5.67	5.96	7.67	7.96	7.05	5.87	8.35	5.44
Prior Year	6.6	4.66	3.55	4.55	3.95	6.58	4.74	7.78	7.26	8.21	9.99	10.2	8.43
Percent Change from Prior Year	28%	18%	36%	-13%	22%	-14%	26%	-1%	10%	-14%	-41%	-18%	-36%

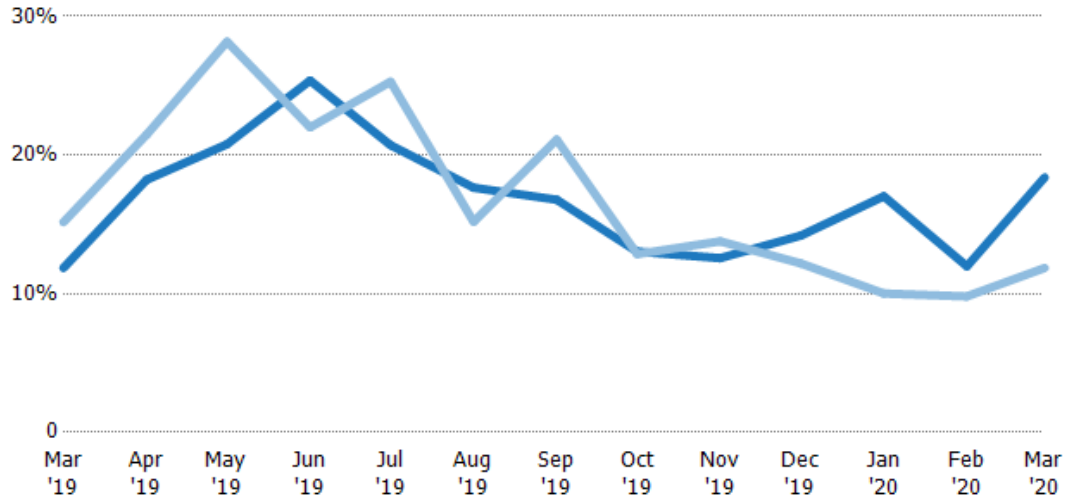
Absorption Rate

The percentage of inventory sold per month.

Filters Used

County: Collier County, Florida, Lee County, Florida

Month/Year	Rate	Chg.
Mar '20	18%	-6.5%
Mar '19	12%	3.3%
Mar '18	15%	15%

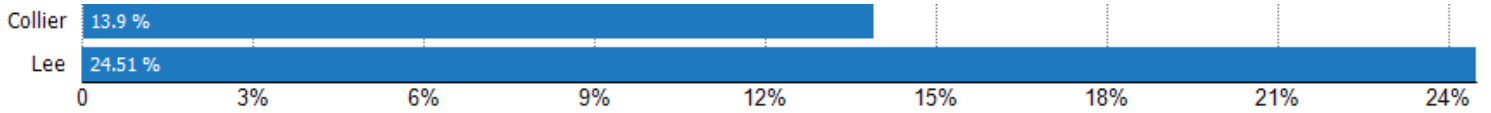


Current Year	12%	18%	21%	25%	21%	18%	17%	13%	13%	14%	17%	12%	18%
Prior Year	15%	21%	28%	22%	25%	15%	21%	13%	14%	12%	10%	10%	12%
Change from Prior Year	3%	3%	7%	-3%	5%	-2%	4%	0%	1%	-2%	-7%	-2%	-7%

Absorption Rate (By County)

The percentage of the inventory sold during the last month by county.

Filters Used: County: Collier County, Florida, Lee County, Florida



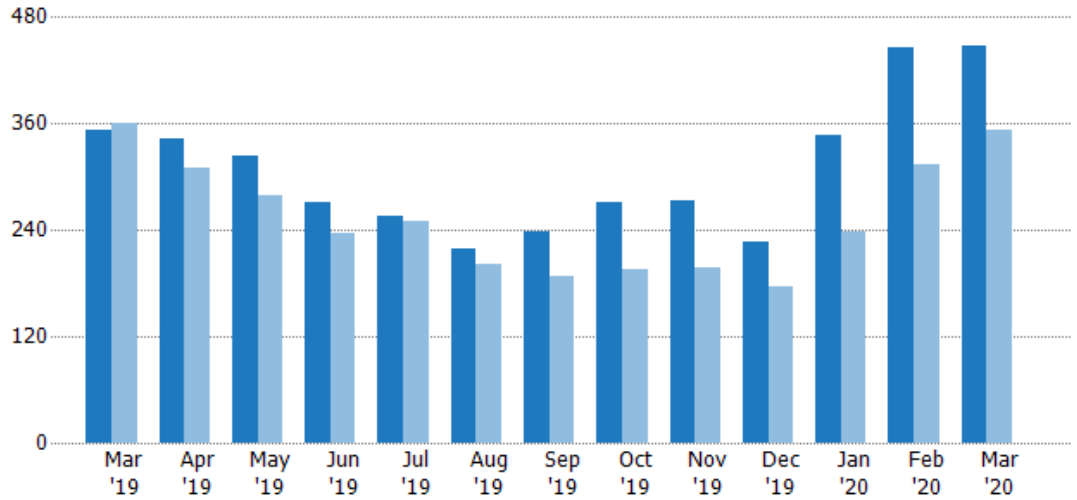
Pending Sales

The number of residential properties with accepted offers that were available at the end each month.

Filters Used

County: Collier County, Florida, Lee County, Florida

Month/Year	Count	% Chg.
Mar '20	448	26.9%
Mar '19	353	-2.2%
Mar '18	361	-11.4%



Current Year	353	343	324	271	256	219	238	272	274	227	346	446	448
Prior Year	361	310	279	236	250	202	188	196	197	177	238	314	353
Percent Change from Prior Year	-2%	11%	16%	15%	2%	8%	27%	39%	39%	28%	45%	42%	27%

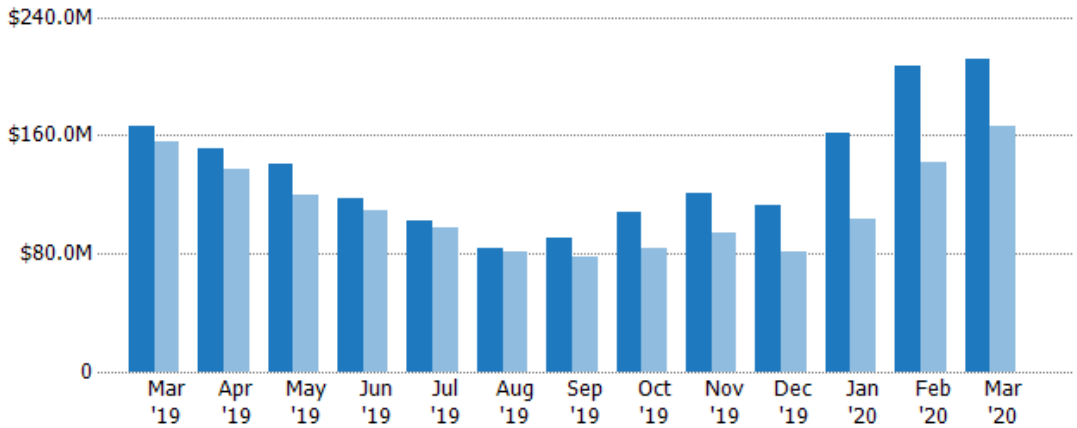
Pending Sales Volume

The sum of the sales price of residential properties with accepted offers that were available at the end of each month.

Filters Used

County: Collier County, Florida, Lee County, Florida

Month/Year	Volume	% Chg.
Mar '20	\$212M	27.8%
Mar '19	\$166M	6.2%
Mar '18	\$156M	-3.1%



Current Year	\$166M	\$151M	\$141M	\$117M	\$102M	\$84M	\$90.1M	\$108M	\$121M	\$112M	\$162M	\$207M	\$212M
Prior Year	\$156M	\$137M	\$120M	\$109M	\$97.3M	\$80.8M	\$77.3M	\$83.1M	\$93.9M	\$81.4M	\$103M	\$142M	\$166M
Percent Change from Prior Year	6%	10%	18%	8%	5%	4%	17%	30%	29%	38%	57%	46%	28%

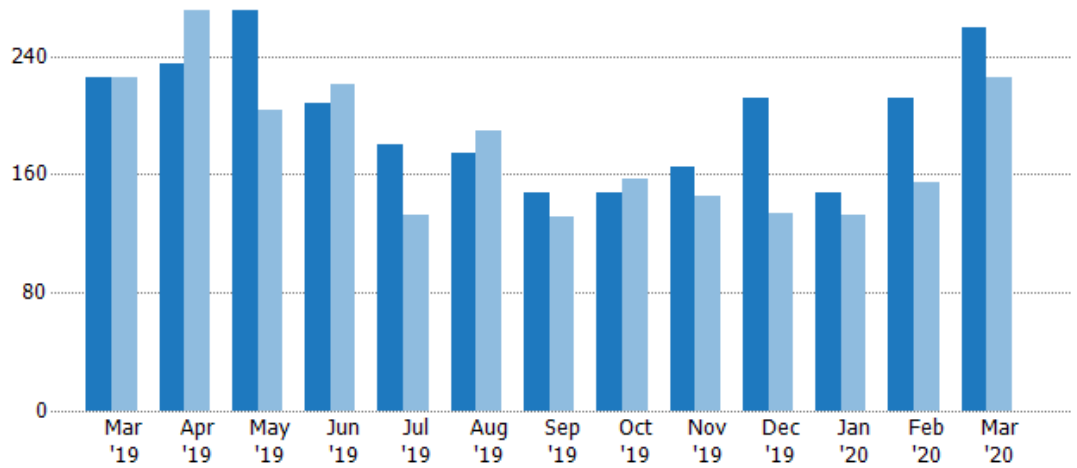
Closed Sales

The total number of residential properties sold each month.

Filters Used

County: Collier County, Florida, Lee County, Florida

Month/Year	Count	% Chg.
Mar '20	259	14.6%
Mar '19	226	0.4%
Mar '18	225	4.4%



Current Year	226	235	271	208	180	174	148	148	165	211	147	212	259
Prior Year	225	271	203	221	132	190	131	157	145	134	133	155	226
Percent Change from Prior Year	0%	-13%	33%	-6%	36%	-8%	13%	-6%	14%	57%	11%	37%	15%

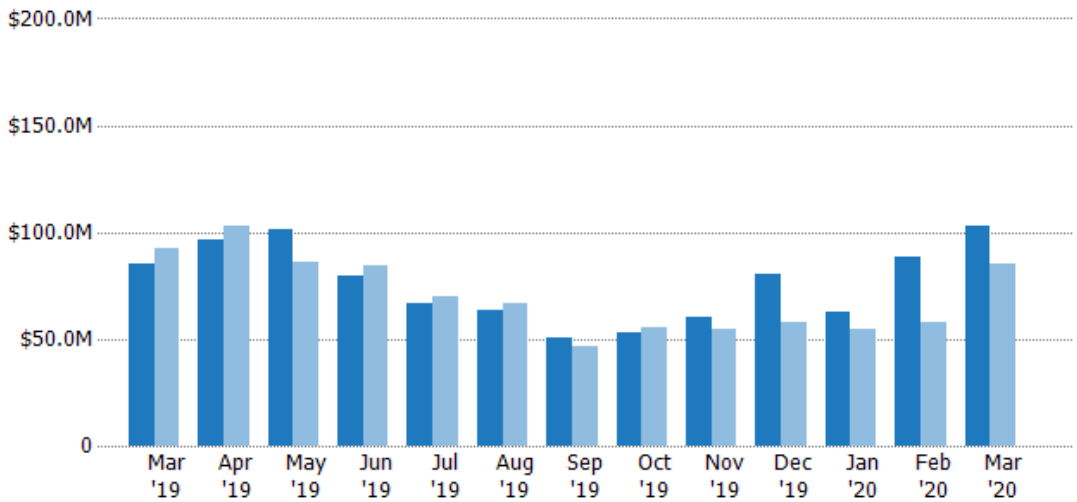
Closed Sales Volume

The sum of the sales price of residential properties sold each month.

Filters Used

County: Collier County, Florida, Lee County, Florida

Month/Year	Volume	% Chg.
Mar '20	\$103M	20.7%
Mar '19	\$85.5M	-8%
Mar '18	\$92.8M	4.9%



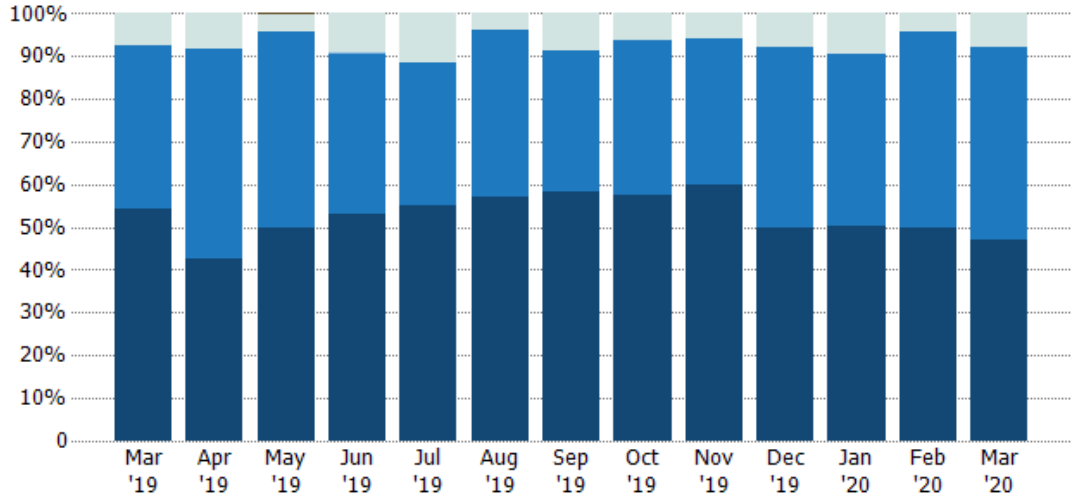
Current Year	\$85.5M	\$96.6M	\$101M	\$79.8M	\$66.4M	\$63.2M	\$50.9M	\$52.6M	\$60.2M	\$80.6M	\$62.5M	\$88.6M	\$103M
Prior Year	\$92.8M	\$103M	\$85.9M	\$84.1M	\$70.2M	\$66.9M	\$46.7M	\$55.7M	\$54.4M	\$57.8M	\$54.8M	\$57.9M	\$85.5M
Percent Change from Prior Year	-8%	-6%	18%	-5%	-5%	-6%	9%	-6%	11%	40%	14%	53%	21%

Closed Sales by Property Type

The percentage of residential properties sold each month by property type.

Filters Used

County: Collier County, Florida, Lee County, Florida



Property Type	Mar '19	Apr '19	May '19	Jun '19	Jul '19	Aug '19	Sep '19	Oct '19	Nov '19	Dec '19	Jan '20	Feb '20	Mar '20
Other	-	-	0%	-	-	-	-	-	-	-	-	-	-
Multifamily/Multiplex	8%	8%	4%	9%	12%	4%	9%	6%	6%	8%	10%	4%	8%
Mobile/Manufactured	-	-	-	0%	-	-	-	-	-	-	-	-	-
Condo/Townhouse	38%	49%	46%	38%	33%	39%	33%	36%	34%	42%	40%	46%	45%
Single Family Residence	54%	43%	50%	53%	55%	57%	58%	57%	60%	50%	50%	50%	47%

Closed Sales (By County)

The total number of residential properties sold during the last month by county.

Filters Used: County: Collier County, Florida, Lee County, Florida

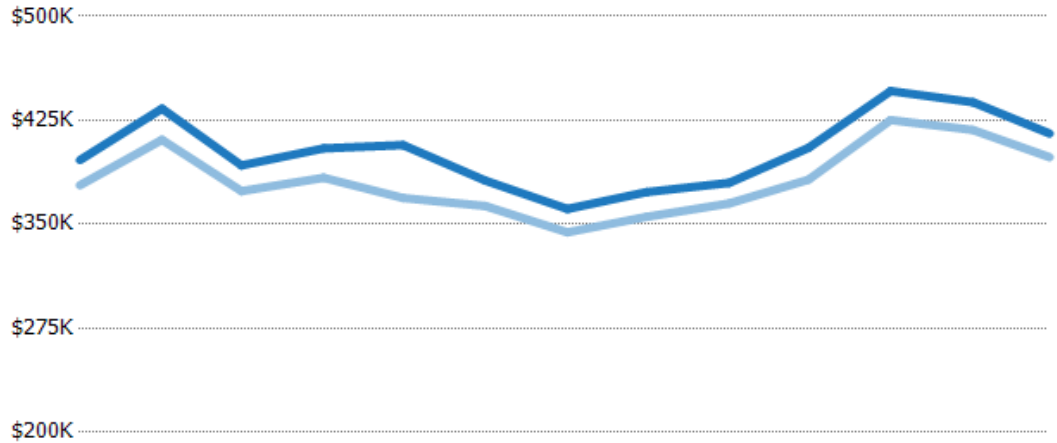


Average Sales Price vs Average Listing Price

The average sales price as a percentage of the average listing price for properties sold each month.

Filters Used

County: Collier County, Florida, Lee County, Florida



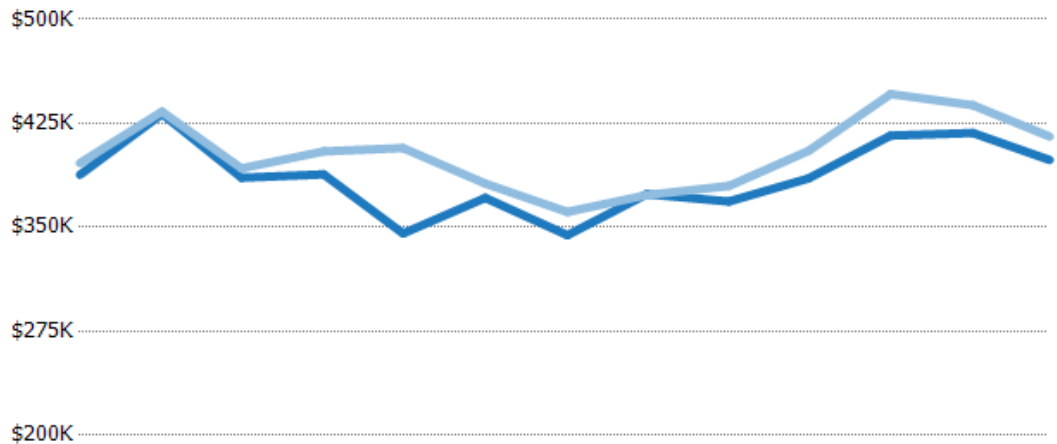
	Mar '19	Apr '19	May '19	Jun '19	Jul '19	Aug '19	Sep '19	Oct '19	Nov '19	Dec '19	Jan '20	Feb '20	Mar '20
Avg List Price	\$396K	\$433K	\$392K	\$405K	\$407K	\$382K	\$361K	\$373K	\$380K	\$405K	\$446K	\$438K	\$415K
Avg Sales Price	\$378K	\$411K	\$374K	\$384K	\$369K	\$363K	\$344K	\$355K	\$365K	\$382K	\$425K	\$418K	\$398K
Avg Sales Price as a % of Avg List Price	95%	95%	95%	95%	91%	95%	95%	95%	96%	94%	95%	95%	96%

Average Sales Price vs Average Est Value

The average sales price as a percentage of the average AVM or RVM® valuation estimate for properties sold each month.

Filters Used

County: Collier County, Florida, Lee County, Florida



	Mar '19	Apr '19	May '19	Jun '19	Jul '19	Aug '19	Sep '19	Oct '19	Nov '19	Dec '19	Jan '20	Feb '20	Mar '20
Avg Est Value	\$388K	\$432K	\$386K	\$388K	\$346K	\$371K	\$344K	\$374K	\$369K	\$385K	\$416K	\$418K	\$399K
Avg Sales Price	\$396K	\$433K	\$392K	\$405K	\$407K	\$382K	\$361K	\$373K	\$380K	\$405K	\$446K	\$438K	\$415K
Avg Sales Price as a % of Avg Est Value	102%	100%	102%	104%	118%	103%	105%	100%	103%	105%	107%	105%	104%

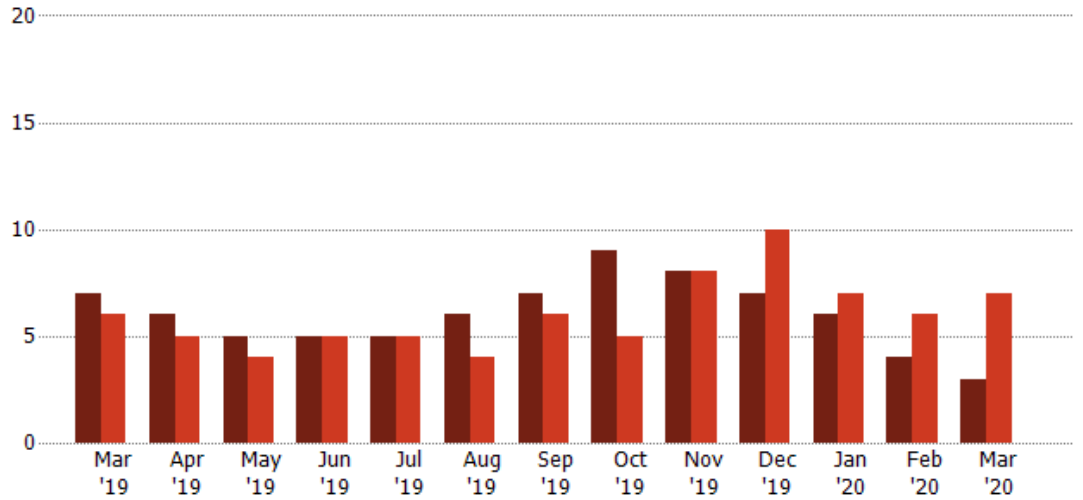
Distressed Listings

The number of distressed residential properties that were for sale at the end of each month.

Filters Used

County: Collier County, Florida, Lee County, Florida

Month/Year	Count	% Chg.
Mar '20	3	-57.1%
Mar '19	7	16.7%
Mar '18	6	83.3%



Current Year	7	6	5	5	5	6	7	9	8	7	6	4	3
Prior Year	6	5	4	5	5	4	6	5	8	10	7	6	7
Percent Change from Prior Year	17%	20%	25%	0%	0%	50%	17%	80%	0%	-30%	-14%	-33%	-57%

Distressed Listings (By County)

The number of distressed single-family, condominium and townhome properties that were for sale at the end of the last month by county.

Filters Used: County: Collier County, Florida, Lee County, Florida



Appendix

The metrics that are calculated by RPR® may show the same general trends as those published by other sources (i.e. MLS, Associations or vendors), but because of our processes and parcel-centric approach, some variation may occur. Data sources include MLS's, where licensed, and public records for more in-depth metrics on distressed properties.

Report Details

Report Name: Monthly Market Data Report

Run Date: 04/06/2020

Scheduled: Yes

Report Date Range: From 3/2019 To: 3/2020

Information Included

- Include Cover Sheet
- Include Key Metric Summary
- Include Metrics By: County
- Averages
- Include Appendix
- Medians

MLS Filter

MLS: All

Listing Filters

Property Types: All

Sales Types: All

Price Range: None

Location Filters

State: All

County: Collier County, Florida Lee County, Florida

ZIP Code: All

Listing Activity Charts

- New Listings
- Active Listings
- Average Listing Price
- Average Listing Price per Sq Ft
- Average Listing Price vs Est Value
- Median Days in RPR
- Months of Inventory
- Absorption Rate

Sales Activity Charts

- Active/Pending/Sold
- New Pending Sales
- Pending Sales
- Closed Sales
- Average Sales Price
- Average Sales Price per Sq Ft
- Average Sales Price vs Listing Price
- Average Sales Price vs Est Value

Distressed Charts

- Distressed Listings
- Distressed Sales

Data Tables Using 3/2020 data

- Listing Activity by ZIP
- Listing Activity by Metro Area
- Sales Activity by ZIP
- Sales Activity by Metro Area