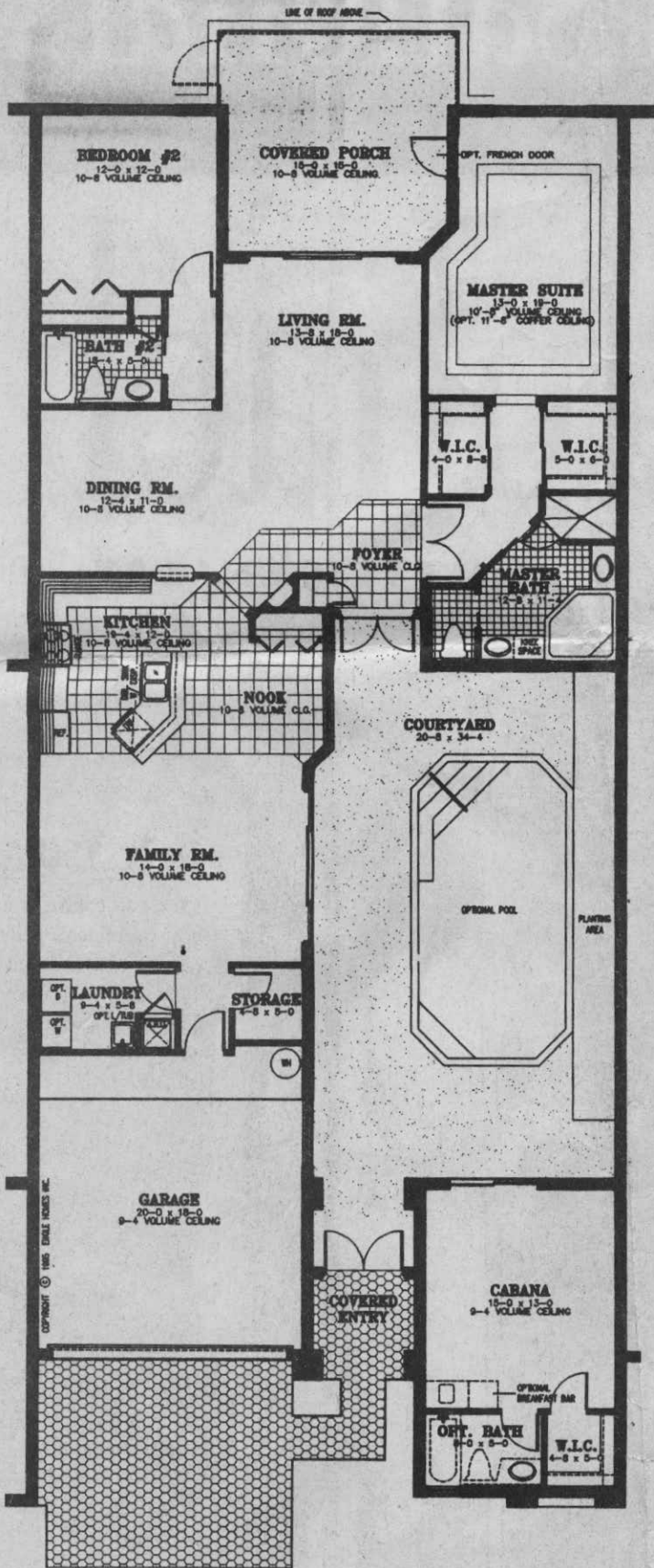


DECORATED MODELS OPEN

Enjoy Courtyard Home Living in Pelican Landing from \$209,900



Visit Costa del Sol by Engle Homes and discover Courtyard Home living priced thousands less than you would expect in a community as prestigious as Pelican Landing. Priced from \$209,900 these innovative designs come loaded with luxury features: Interlocking paver driveway and walkway, cabana guest house, deluxe white-on-white kitchens with 42" oversized upper cabinets, 8' French doors at front entry, covered patio, extensive use of ceramic tile, and much more... *And for a limited time, get a free pool on select inventory homes available for quick occupancy (see sales rep for details).*

With maintenance-free condominium living, you'll have more time to enjoy the incomparable Pelican Landing lifestyle. Exercise at the tennis and fitness center or stroll along the shore at the island beach park accessed via private water taxi. Ask about available golf memberships. And as a resident of Costa del Sol, you'll also be eligible to join the Pelican Isle Yacht Club for even more social and recreational opportunities.

Come tour the decorated models today!

On Highway 41, 3-1/2 miles north of Bonita Beach Rd. Enter Pelican Landing at the south gate and take the first left to Costa del Sol. Models open Mon.-Sat. 10-5, Sun. 12-5
Phone: (941) 992-8554.



Luxurious Courtyard Homes
from \$209,900

COSTA DEL SOL
AT PELICAN LANDING
A CONDOMINIUM

ENGLE
HOMES
NAPLES

A subsidiary of Engle Homes, Inc. a public company listed on the NASDAQ stock exchange.

Brokers welcome

ORAL REPRESENTATIONS CANNOT BE RELIED UPON AS CORRECTLY STATING REPRESENTATIONS OF THE DEVELOPER. FOR CORRECT REPRESENTATIONS, MAKE REFERENCE TO THE BROCHURE AND TO THE DOCUMENTS REQUIRED BY SECTION 718.503, FLORIDA STATUTES TO BE FURNISHED BY A DEVELOPER TO A BUYER OR LESSEE. ALL DIMENSIONS, FEATURES AND SPECIFICATIONS ARE SUBJECT TO CHANGE WITHOUT NOTICE. CGC021907

