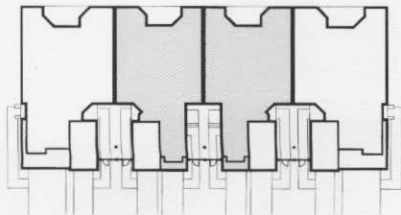


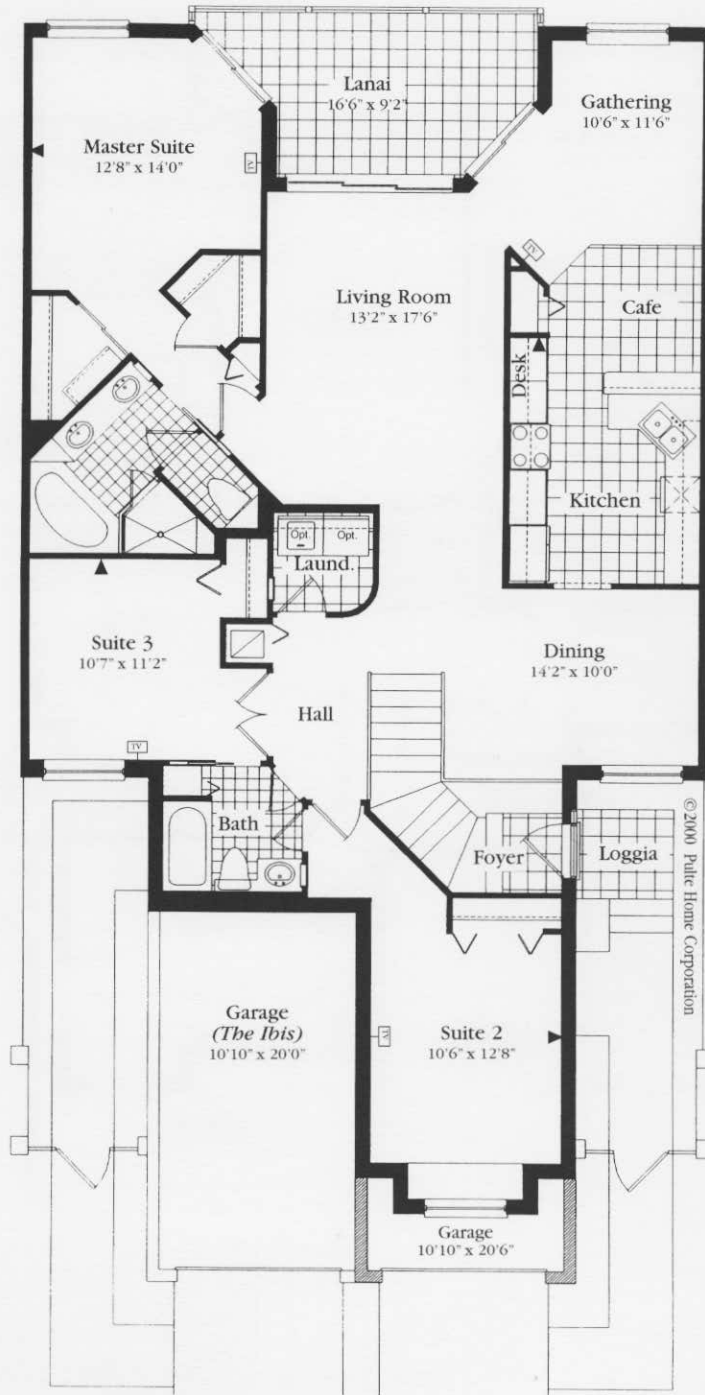
The Osprey 1845

3 Bedroom
2 Bathroom - 1 Car Garage

Living Area	1,845 sq. ft.
Lanai	143 sq. ft.
Garage	293 sq. ft.
Loggia	32 sq. ft.
Total	2,313 sq. ft.



SECOND FLOOR INTERIOR
(8 unit building shown)



© 2000 Pulte Home Corporation

□ TV Outlet ► Telephone Outlet

Exact dimensions and spatial arrangements on this plan are approximate and may vary in final construction.