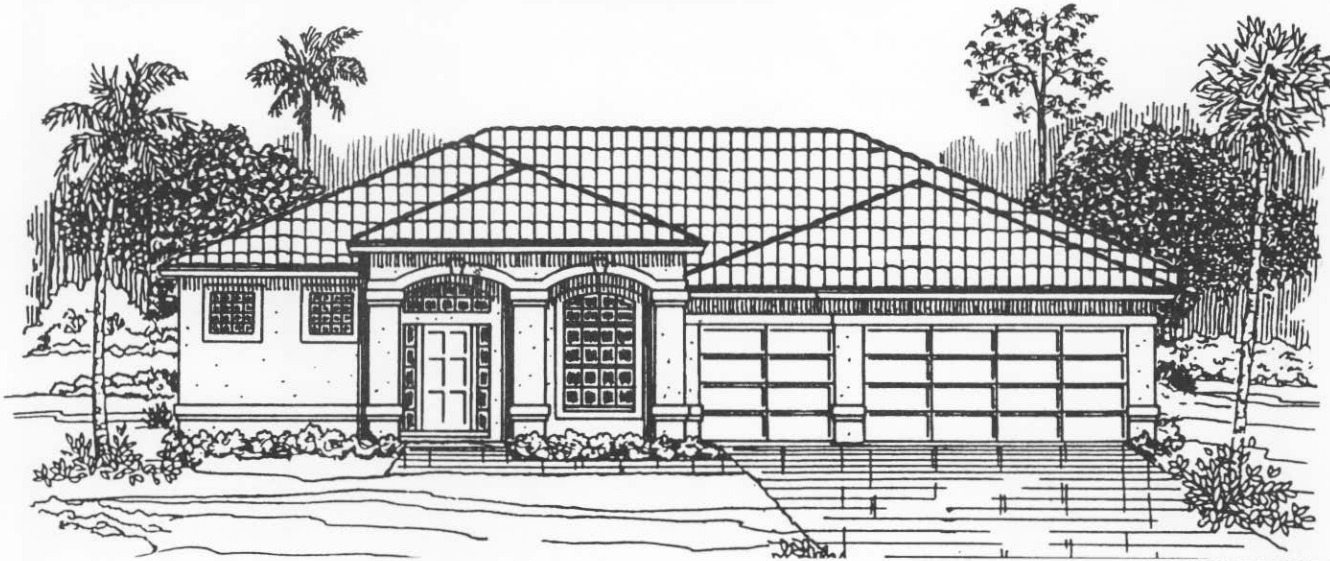


**T  
H  
E  
  
Y  
O  
R  
K**



*ELEVATION 'A'*



*ELEVATION 'B'*



*ELEVATION 'C'*

**4 Bedroom, 3 Bath, Family Room**

 **Rutenberg  
Homes**

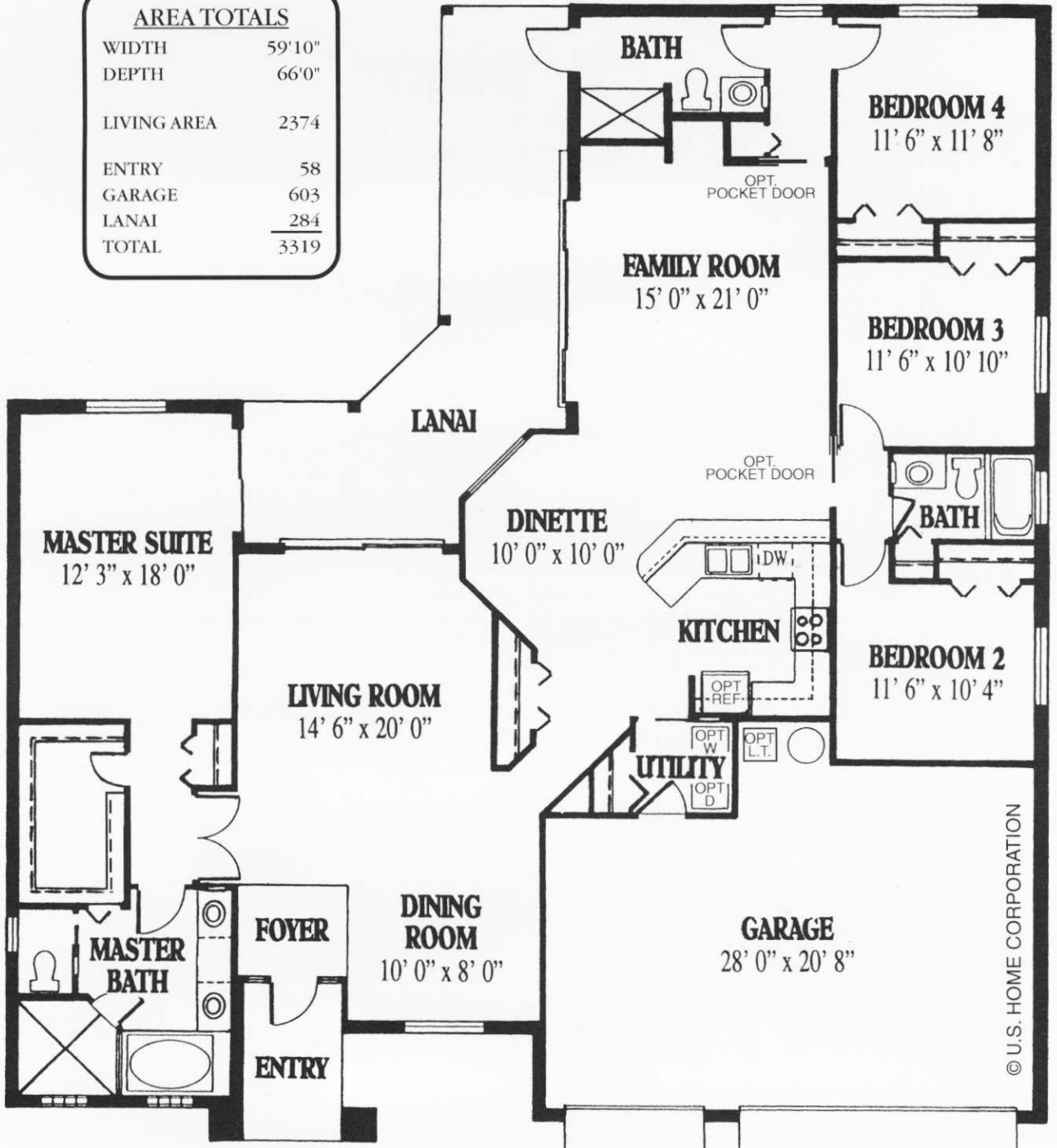
A DIVISION OF US HOME CORPORATION

© 1993 U.S. HOME CORPORATION



# THE YORK

AREA TOTALS	
WIDTH	59'10"
DEPTH	66'0"
LIVING AREA	2374
ENTRY	58
GARAGE	603
LANAI	284
TOTAL	3319

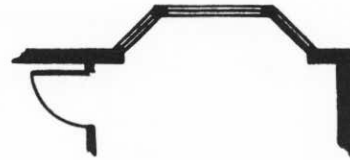


ALL DIMENSIONS ARE APPROXIMATE AND MAY VARY WITH THE ACTUAL CONSTRUCTION.

© U.S. HOME CORPORATION



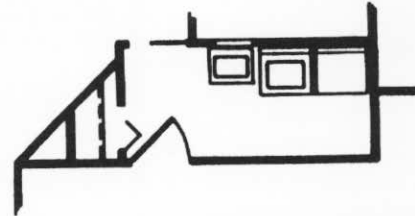
BAY WINDOW AT MASTER SUITE  
ADDITIONAL LIVING AREA 15' SQ. FT.



BAY WINDOW AT BEDROOM 4  
NOT AVAILABLE WITH EXTENDED  
FAMILY ROOM LAYOUT  
ADDITIONAL LIVING AREA 15' SQ. FT.



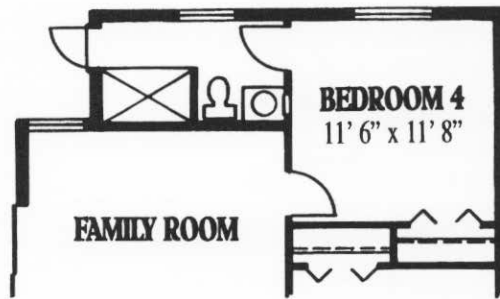
POCKET DOOR TO VESTIBULE  
AT BEDROOM 4



UTILITY ROOM LAYOUT  
(FOR STANDARD YORK ONLY)  
ADDITIONAL LIVING AREA 31' SQ. FT.



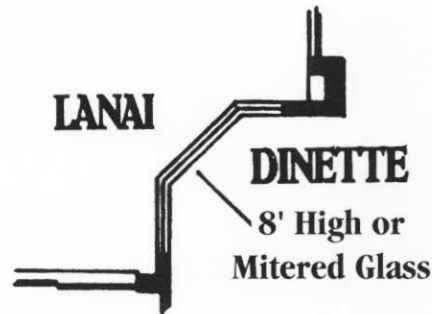
EXTENDED LIVING ROOM  
ADDITIONAL 32 SQ. FT.



FAMILY ROOM WITH  
OPTIONAL GOLF VIEW



BILLIARDS ROOM IN LIEU  
OF BEDROOM 4  
ADDITIONAL LIVING AREA 53' SQ. FT.



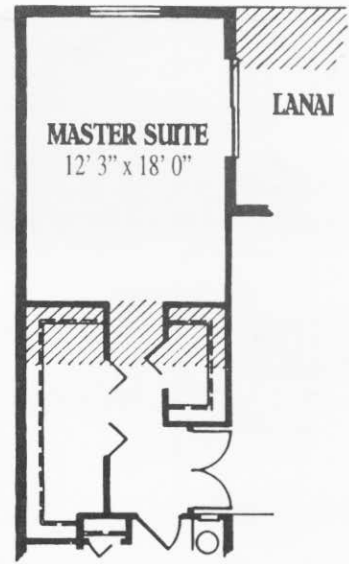
MITERED GLASS AT DINETTE

**P  
O  
P  
U  
L  
A  
R  
  
O  
P  
T  
I  
O  
N  
S**

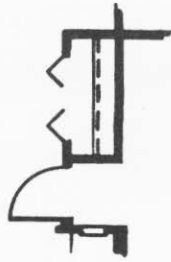
**POPULAR  
OPTIONS**



**EXTENDED FAMILY ROOM LAYOUT**  
ADDITIONAL LIVING AREA 130' SQ. FT.



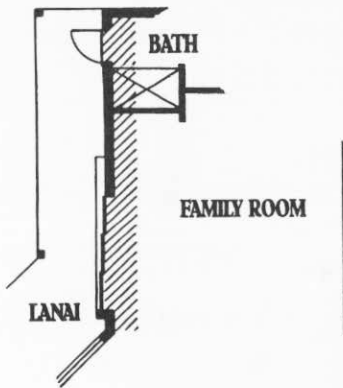
**EXTENDED MASTER SUITE  
AND LANAI**  
ADDITIONAL LIVING AREA 55' SQ. FT.



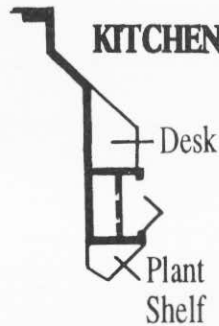
**SINGLE DOOR AT  
MASTER SUITE**



**BI-FOLD DOOR AT MASTER SUITE  
WALK-IN CLOSET WITH  
DECORATIVE NICHE**



**EXTENDED FAMILY ROOM**  
ADDITIONAL LIVING AREA  
55' SQ. FT.



**DESK IN  
KITCHEN**



**PLANT SELF  
DETAIL AT  
CORRIDOR TO  
KITCHEN**

