

S
T.
C
H
A
R
L
E
S
2
1
5
0



ELEVATION 'A'



ELEVATION 'B'



ELEVATION 'C'

3 Bedroom, 2 Bath & Den

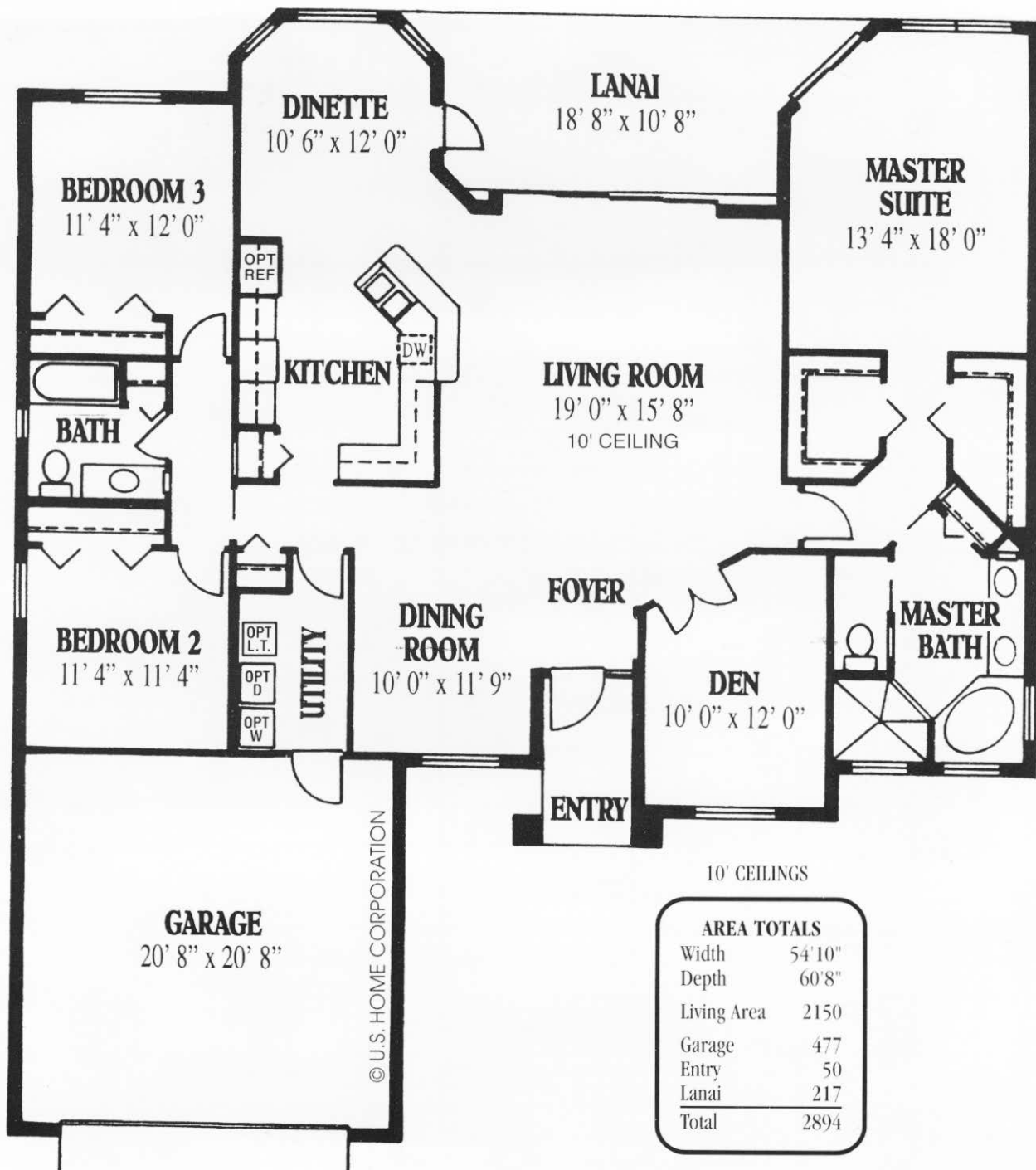
 **Rutenberg
Homes**

A DIVISION OF US HOME CORPORATION

© 1993 U.S. HOME CORPORATION



ST. CHARLES 2150



The St. Charles 2150 floor plan is a larger version of the St. Charles V, with plenty of the same great features and lots of enticing options available. A spectacular covered entry takes you in to the combined dining and living area, with a cozy den directly off that. A bay window in the dinette area gives a panoramic view of the backyard or an easy step out the side door lets you relax on the large lanai. Roomy baths and bigger than usual utility also add to the qualities of this home.



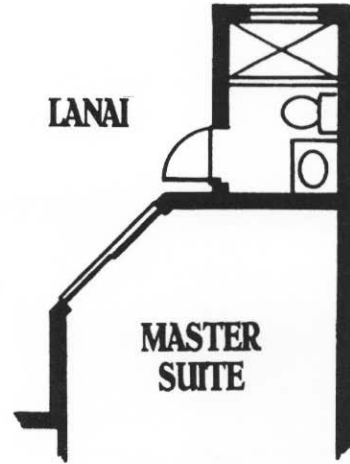
A DIVISION OF US HOME CORPORATION

ALL DIMENSIONS ARE APPROXIMATE AND MAY VARY WITH THE ACTUAL CONSTRUCTION.



BEDROOM 3

2' EXTENDED BEDROOM 3
Additional Living Area 31' sq. ft.



LANAI

MASTER SUITE

POOL BATH AT BACK OF HOUSE
Additional Living Area 55' sq. ft.



BEDROOM 3
12' 4" x 12' 0"

BEDROOM 2
12' 4" x 11' 4"

GARAGE
21' 8" x 20' 8"



MASTER SUITE

13' 4" x 20' 0"

BAY WINDOW AT MASTER SUITE
Additional Living Area 15' sq. ft.



MASTER SUITE

13' 4" x 20' 0"

FULL LENGTH BAY WINDOW AT MASTER SUITE
Additional Living Area 40' sq. ft.



CLOSET AT DEN



MASTER SUITE

13' 4" x 18' 0"

EXTENDED CORNER AT MASTER SUITE
Additional Living Area 14' sq. ft.



8" X 8" COLUMN AT FOYER

1' EXTENDED SIDE OF HOUSE
Additional Living Area 38' sq. ft.

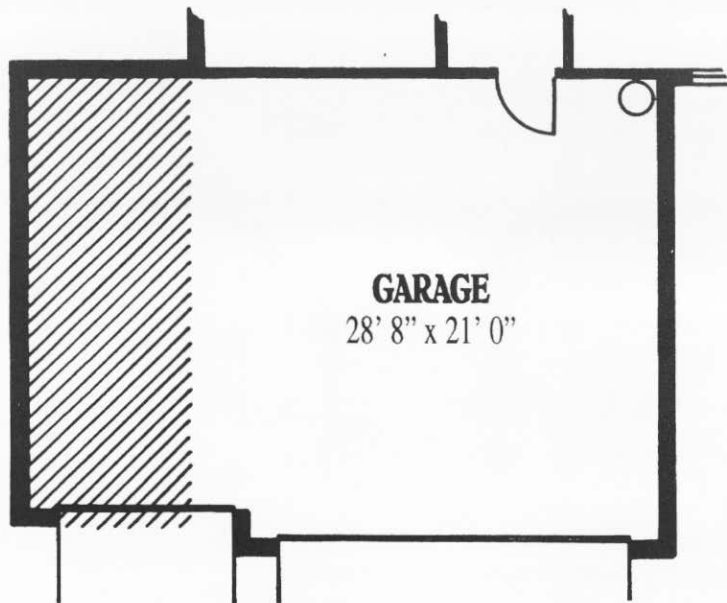


LAUNDRY TUB IN UTILITY

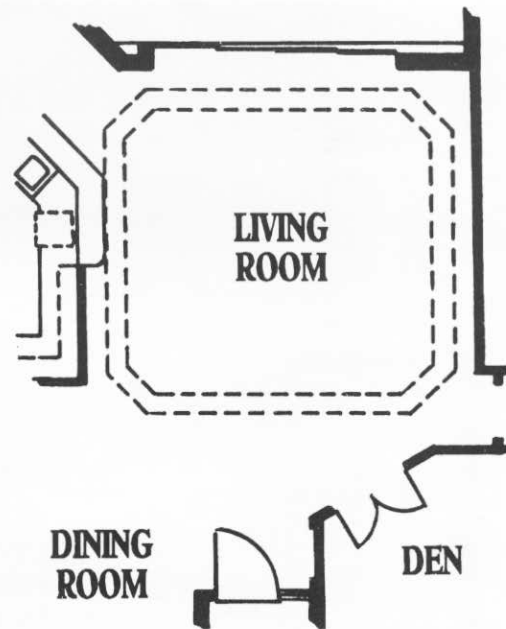
**P
O
P
U
L
A
R

O
P
T
I
O
N
S**

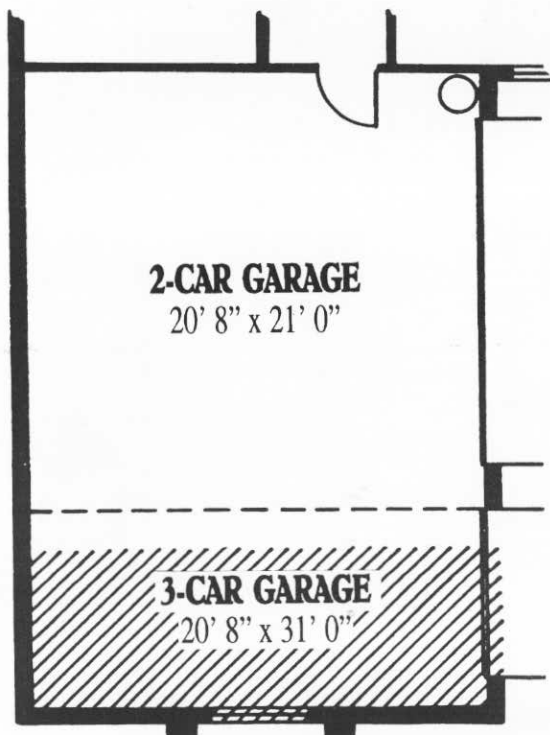
**POPULAR
OPTIONS**



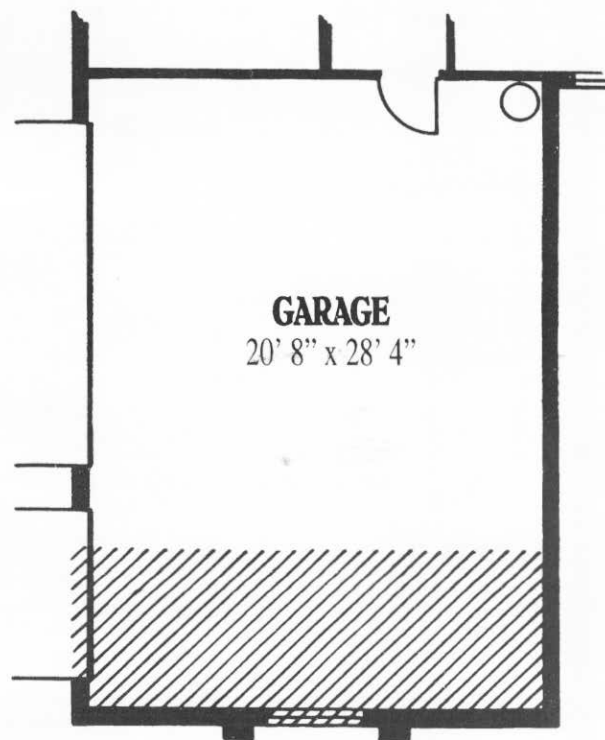
3-CAR GARAGE
Additional Garage Area 178' sq. ft.



TRAY CEILING AT LIVING ROOM



2-CAR OR 3-CAR COURTYARD GARAGE
2-Car Garage Area 476' sq. ft.
3-Car Garage Area 660' sq. ft.



3-CAR SIDE LOAD GARAGE
Additional Garage Area 184' sq. ft.

