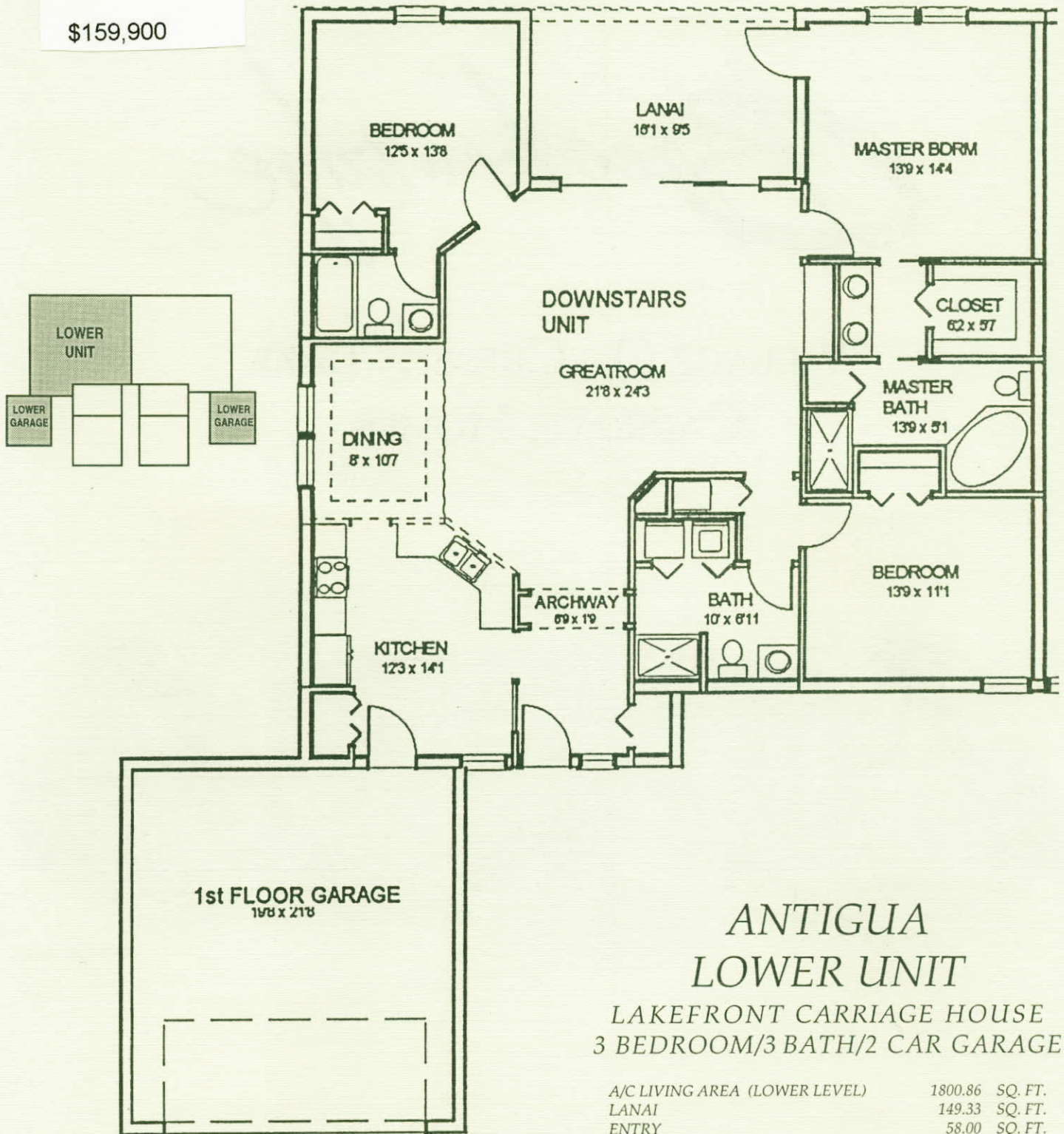


\$159,900



ANTIGUA LOWER UNIT

LAKEFRONT CARRIAGE HOUSE
3 BEDROOM/3 BATH/2 CAR GARAGE

A/C LIVING AREA (LOWER LEVEL)	1800.86	SQ. FT.
LANAI	149.33	SQ. FT.
ENTRY	58.00	SQ. FT.
GARAGE	441.11	SQ. FT.

TOTAL AREA 2449.30 SQ. FT.

ALL DIMENSIONS AND SPECIFICATIONS ARE APPROXIMATE. PLANS ARE SUBJECT TO MINOR ENGINEERING AND ARCHITECTURAL CHANGES. CERTAIN RESIDENCES ARE A REVERSE (MIRROR IMAGE) OF THE FLOOR PLAN.