

# PATIO HOMES



Bonita Bay Realty, Inc.  
26911 S. Bay Drive  
Bonita Springs, FL 33923  
(813) 495-1105 1-800-277-4119

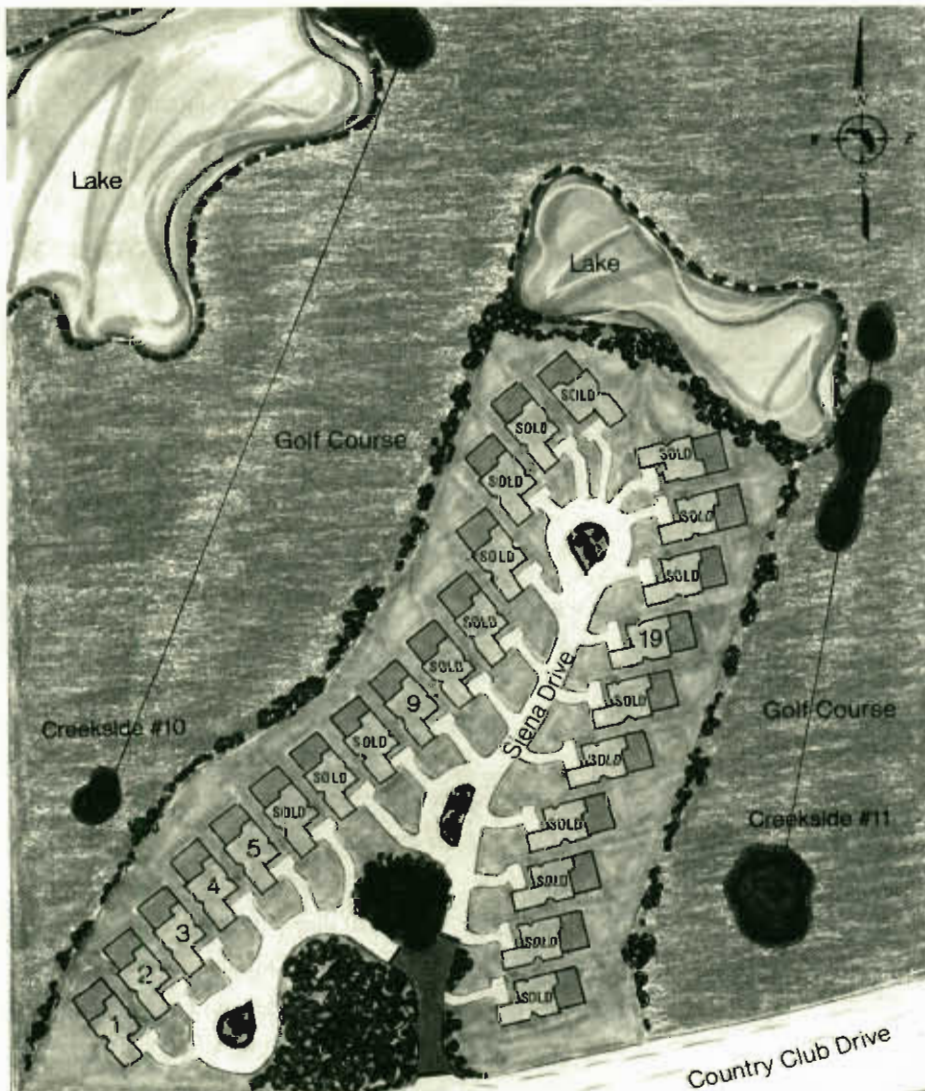
PRICED FROM \$392,900

## SIENA AT BONITA BAY

Olde Italy in the Bonita Bay Tradition . . . Italy is famous for some of the olde world's finest residences. Quaint, yet spacious. Elegant, yet unaffected, the architectural excellence of olde Italy pays strict attention to detail, as well as function. So it is with Siena, Weitz-Bachman Group's newest luxury community.

Bordering the dramatic vistas of Bonita Bay Creeksides' 10th fairway, and fabled par three 11th, Siena offers you a world of rare natural richness. Each and every homesite faces the Creekside Course. From sunset, you'll have views that are truly inspirational. Four floor plans are available to fit any lifestyle.

Siena. An olde world masterpiece framed exquisitely by the natural beauty of Bonita Bay.



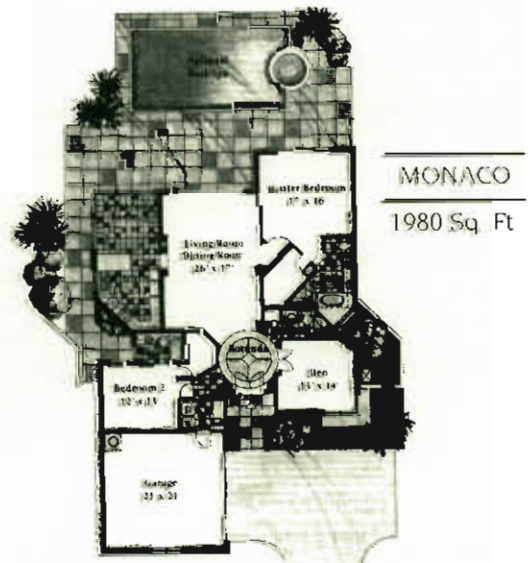
## WEITZ - BACHMAN GROUP

You can have every confidence in selecting a Weitz-Bachman built Siena home.

As one of the most eminent builders and developers of luxury residences within Bonita Bay, it is our goal to offer you a home of uncompromising quality.

In an industry where reputation is everything, we stand by our commitment to excellence and our longevity that dates from 1855.

We would thoroughly enjoy the opportunity to build a Siena Creekside home for you.



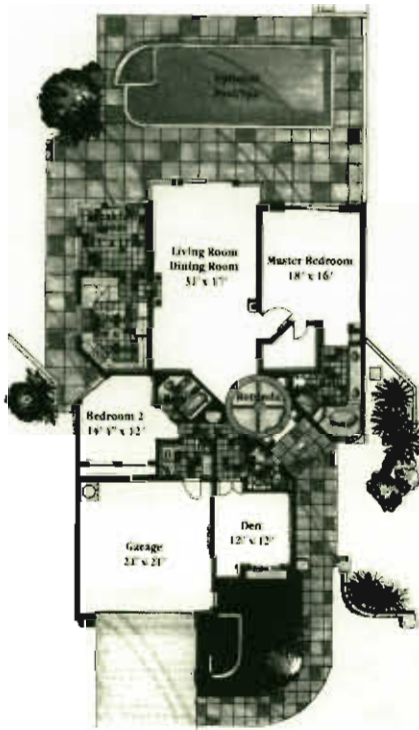


# PATIO HOMES



## ALL SIENA RESIDENCES FEATURE:

- Mediterranean-style architecture
- Stucco exterior with barrel tile roofs
- Tiled rotunda entry
- 16-foot ceiling in living area
- Brick paved driveways
- Double 8-foot entry doors
- Mitered glass windows for maximum golf course viewing
- General Electric appliance package
- Quality carpet and tile throughout
- 8-foot sliding glass doors
- Two-car garage with remote openers
- Extensive shelves for plantscaping
- Pull-down staircase in garage for added storage
- High arched windows to bring in light
- Spacious air conditioned walk-in closets
- Optional pool /spa package



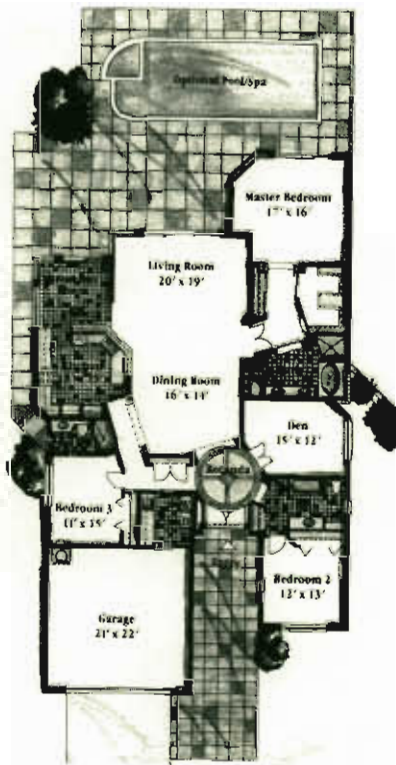
**BJARRITZ**

2200 Sq. Ft.

4 FLOORPLANS TO  
CHOOSE FROM

TOTAL A/C LIVING AREA

1980 TO 2584 Sq. Ft.



**FLORENTINE**

2584 Sq. Ft.



**CANNES**

2470 Sq. Ft.

*All plans, dimensions, prices, and information are approximate and are subject to change without notice. Developer reserves the right to modify site plan, amenities and future product.*