

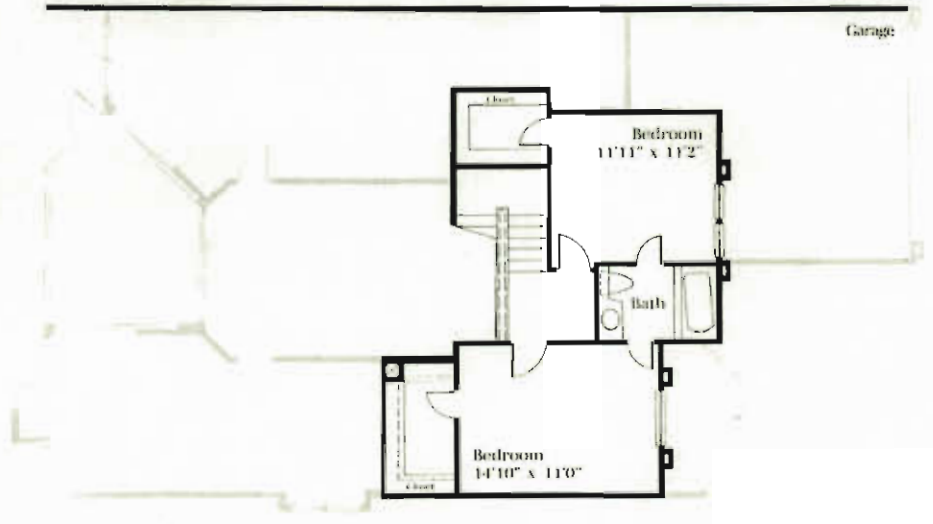


The Chestnut

Spacious and elegant describes this unique two-story floor plan. The Chestnut is adaptable for any part of your active lifestyle. You can entertain your guests in the formal dining room; then retire to the comfort and style of the large family room or relax in the screened lanai and appreciate the natural beauty of Burning Tree. Your guests can enjoy the upstairs privacy of the second and third bedrooms.

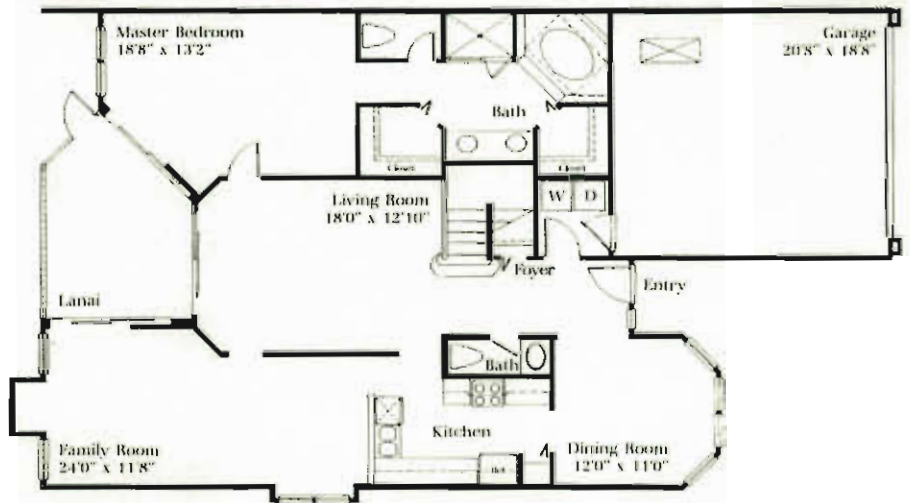
2 Story, 3 Bedrooms, 2½ Bathrooms

Second Floor



2 Story, 3 Bedrooms, 2½ Bathrooms, 1977 Square Feet of Living Area

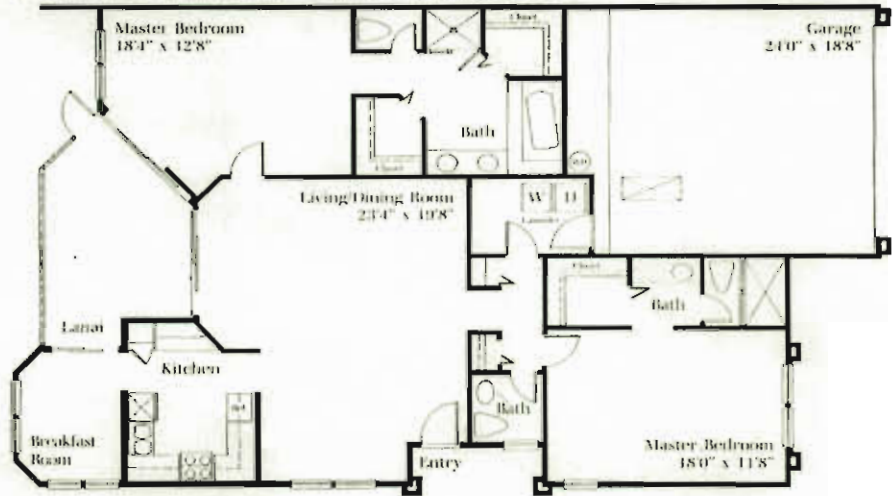
First Floor



The Hickory

The second master bedroom of the spacious and elegant Hickory luxury villa at Burning Tree provides the perfect area of relaxation for visiting friends and relatives. The unique design of the Hickory offers your guests the room and comfort to enjoy the natural beauty of Bonita Bay.

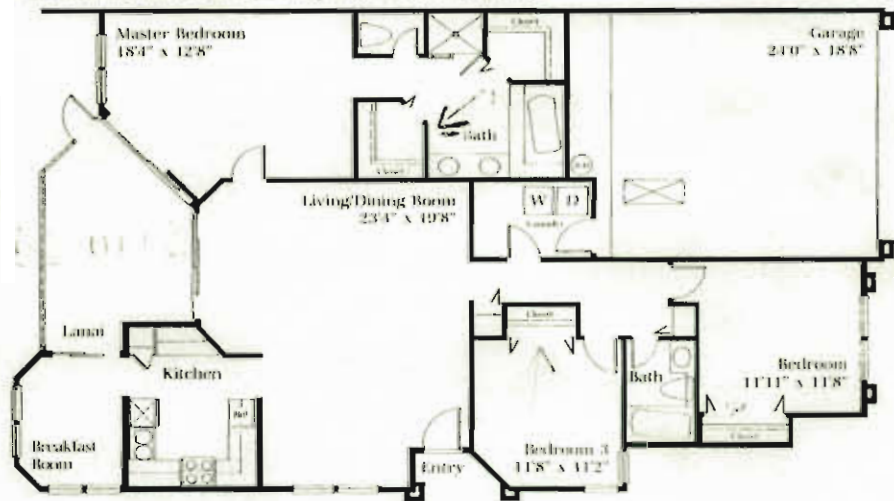
2 Bedrooms, 2½ Bathrooms, 1502 Square Feet of Living Area



The Willow

If you like the comfort and versatility of a third bedroom, The Willow at Burning Tree is just perfect for you. You'll always be ready for guests; the extra room gives you the flexibility you need while entertaining friends and relatives.

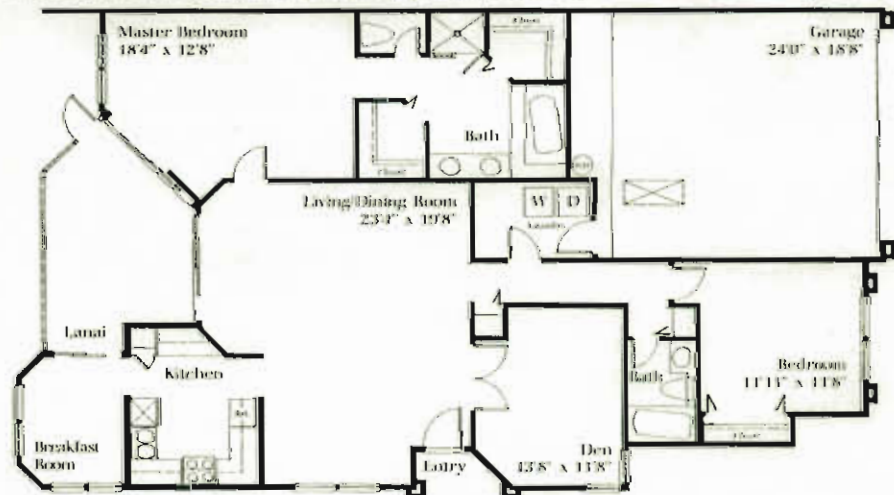
3 Bedrooms, 2 Bathrooms, 1533 Square Feet of Living Area



The Elmwood

The versatility of the den allows you to relax in comfort, while watching television or reading a book. The privacy of the den permits you to think and work in quiet. Whether you're writing a letter or working with your favorite hobby, you will enjoy the serenity of the den.

2 Bedrooms, 2 Bathrooms, Plus Den, 1533 Square Feet of Living Area



Burning Tree Expanded Willow Plan

This home features:

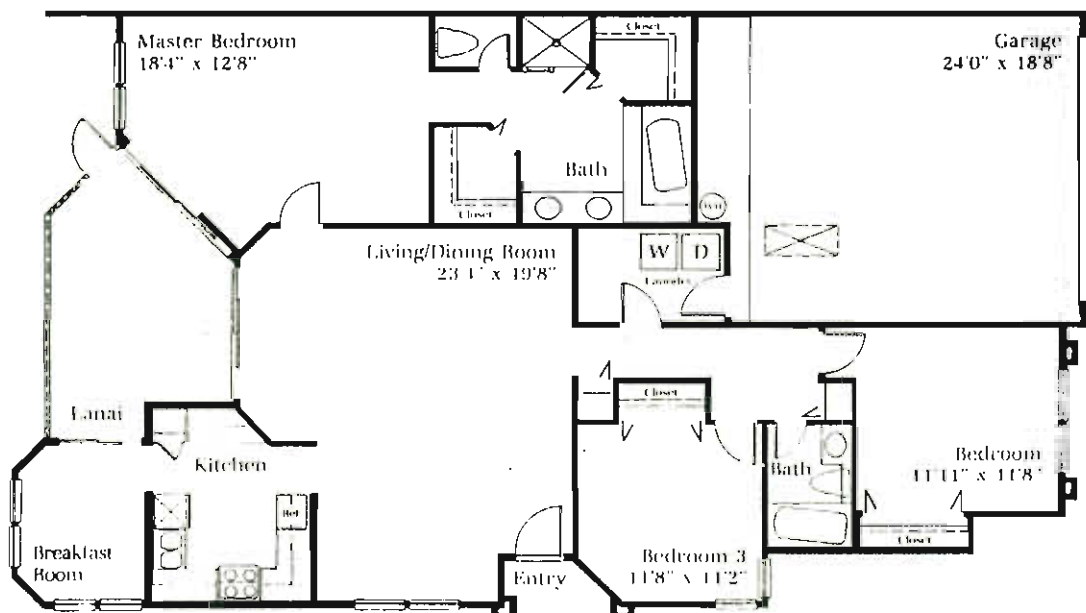
- ◆ Approximately 1700 square feet of air conditioned space.
- ◆ Two bedrooms + den
- ◆ Expanded two car garage.
- ◆ Detached single family villa sitting on two Burning Tree homesites.
- ◆ Den built-in entertainment center.
- ◆ Expanded bedroom two with bay window.
- ◆ Two full bathrooms + powder rm.
- ◆ Oversized screen lanai.

Taxes & Association Dues :

Burning Tree Neighborhood
Association dues : \$ 216.67

Bonita Bay Community
Association dues: \$ 1,155 for 1997

Lee County Property
Taxes for 1996 : \$ 3,207.18



(Standard Willow Plan - See attachments for Wallace changes)

This information is obtained from sources we regard as reliable and is believed to be correct. However, we assume no liability for errors or omissions herein. All dimensions are approximate