

PATIO HOMES

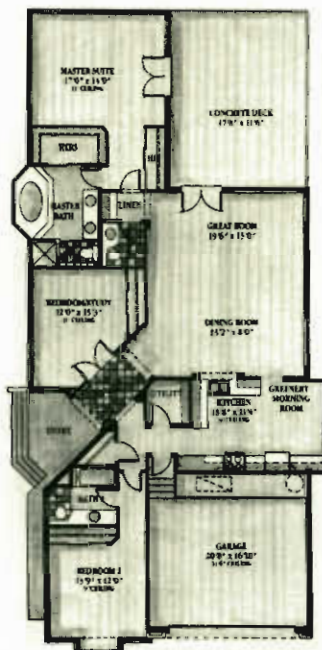


MONTARA HOME FEATURES:

- Exciting architecture – stucco exteriors, concrete tile roofs and brick-lined concrete driveways
- Professional landscaping and master metered irrigation systems
- Attached two-car garages with convenient door openers and overhead storage
- Energy efficient tinted windows, exterior wall insulation, ceiling paddle fans and central heating and cooling systems with energy-saving heat pumps
- Cultured marble on all window sills and master bath vanity tops
- Recessed lighting, decorator fixtures and silent switches
- Spacious volume ceilings
- Luxury plumbing fixtures and designer-selected hardware
- Ceramic tile and luxurious wall-to-wall carpeting
- Pre-wired for telephone and cable television
- Carefree upgraded kitchen appliances
- Morning room and full-height pantry in kitchen
- European-style kitchen cabinets with custom laminated counter tops
- Ventilated, vinyl-clad closet shelving
- Quick recovery, high efficiency, 40-gallon water heater
- Luxury baths feature exhaust fans, water-saving toilets, oversized vanity mirrors and safety glass shower enclosures
- Convenient attic access
- Neighborhood heated pool and cabana
- Maintenance-free living
- Pool is optional

THE MONTEGO I

Living Area	2449 Sq. Ft.
Cement Deck	430 Sq. Ft.
Garage	432 Sq. Ft.
TOTAL AREA	3311 Sq. Ft.



THE BARBUDA I

Living Area	2050 Sq. Ft.
Cement Deck	398 Sq. Ft.
Garage	435 Sq. Ft.
TOTAL AREA	2883 Sq. Ft.



THE ANTIGUA I

Living Area	1885 Sq. Ft.
Cement Deck	584 Sq. Ft.
Garage	415 Sq. Ft.
TOTAL AREA	2884 Sq. Ft.

All plans, dimensions, prices, and information are approximate and are subject to change without notice. Developer reserves the right to modify site plan, amenities and future product.