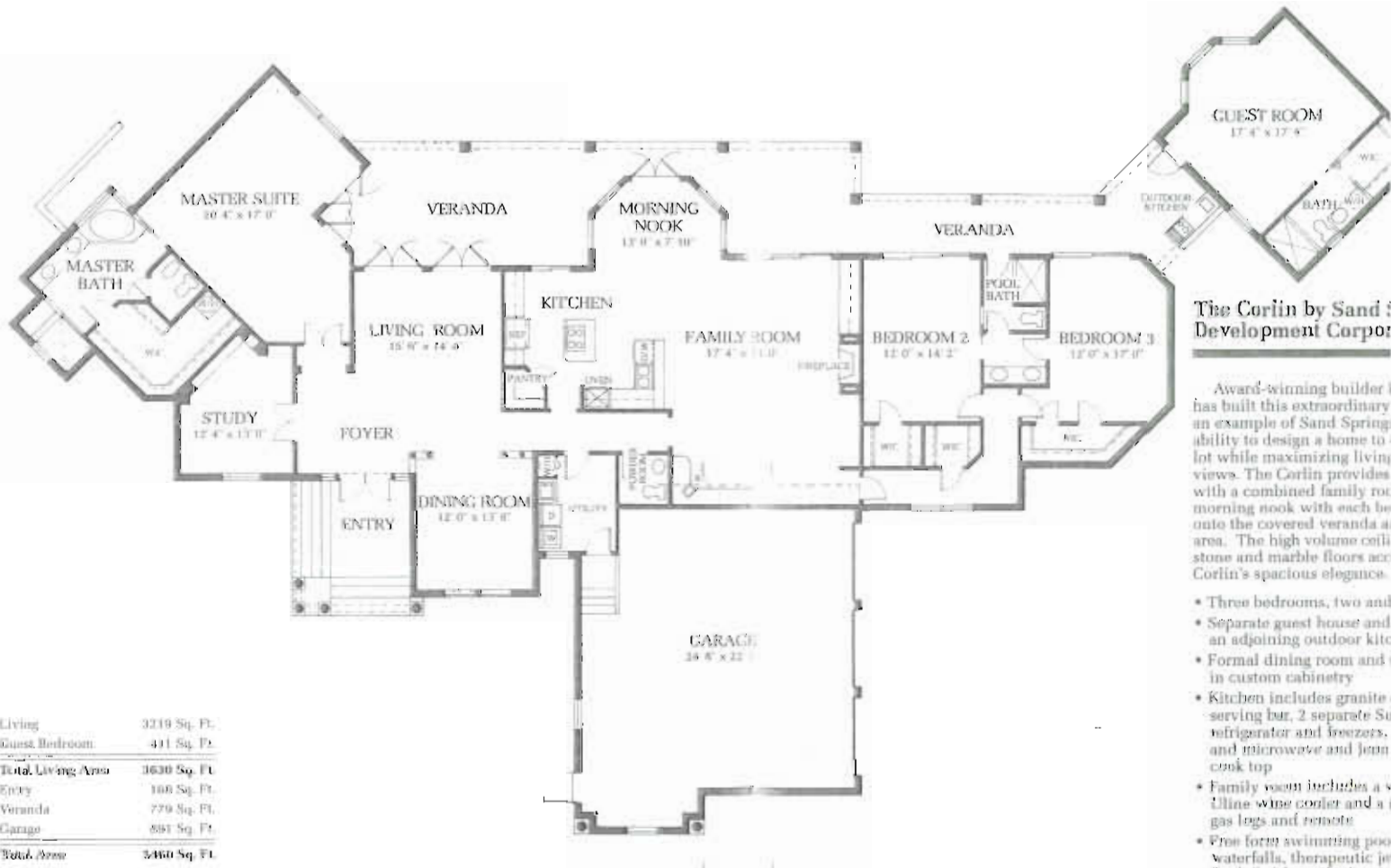


THE CORLIN



The Corlin by Sand Development Corpor

Award-winning builder has built this extraordinary example of Sand Spring ability to design a home to lot while maximizing living views. The Corlin provides with a combined family room morning nook with each be onto the covered veranda area. The high volume coil stone and marble floors acc Corlin's spacious elegance.

- Three bedrooms, two and an adjoining outdoor kitchen
- Formal dining room and in custom cabinetry
- Kitchen includes granite serving bar, 2 separate Su refrigerator and freezers, and microwave and Jenn cook top
- Family room includes a v Uline wine cooler and a gas logs and remote
- Free form swimming pool waterfalls, therapeutic jet Deck finish on the lanai
- Three-car garage including for a work bench

Living	3219 Sq. Ft.
Guest Bedroom	411 Sq. Ft.
Total Living Area	3630 Sq. Ft.
Entry	100 Sq. Ft.
Veranda	779 Sq. Ft.
Garage	581 Sq. Ft.
Total Area	5400 Sq. Ft.

Floorplans and rendering shown are only intended to be a representative illustration of general availability. Please contact the builder directly.