



Bay Villa

K I N G O N H O M E S

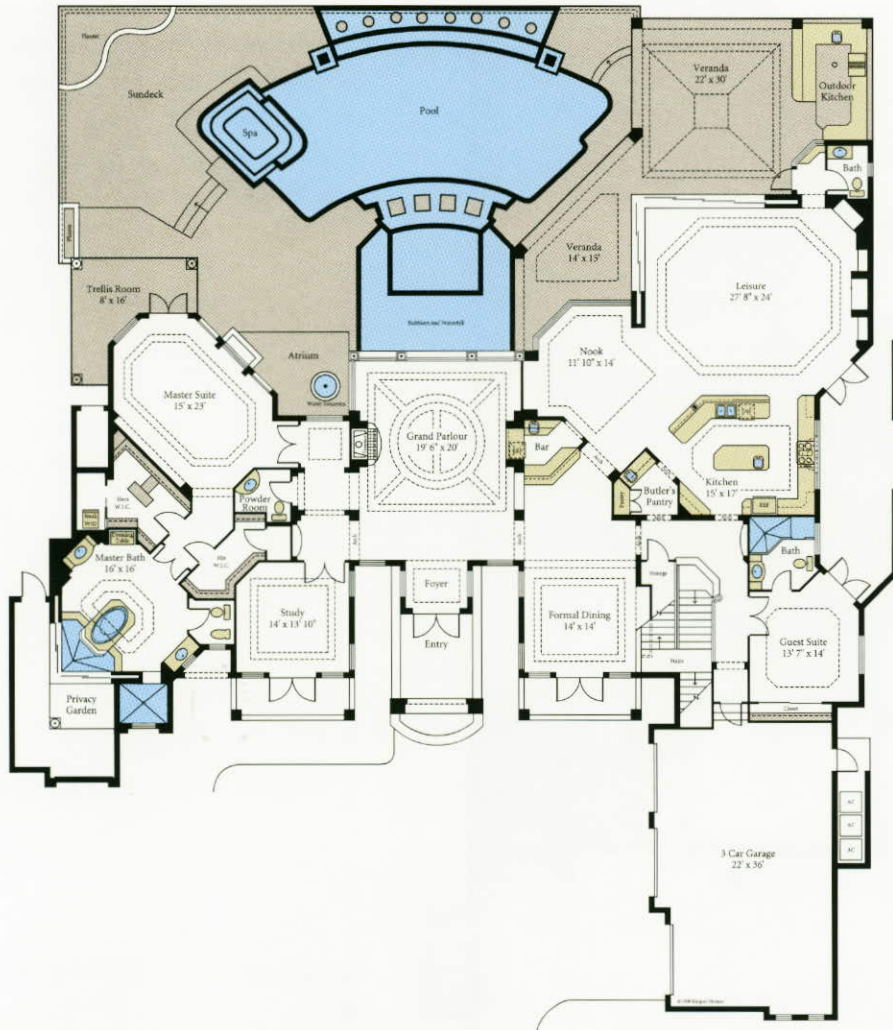


Thirty years of combined experience distinguish

this family-owned building company. Since its formation in 1982, the firm has built more than 200 custom homes, emphasizing attention to detail and a one-on-one relationship with clients. A continuing commitment to the community and the environment forms the basis of the award-winning firm's philosophy.



KINGTON HOMES
Since 1982



1st Living Area	4,397 Sq. Ft.
2nd Living Area	1,508 Sq. Ft.
Bonus Room above Garage	336 Sq. Ft.
TOTAL AREA	6,241 Sq. Ft.
Garage	848 Sq. Ft.
Veranda	1,080 Sq. Ft.
Balcony	168 Sq. Ft.
Entry	104 Sq. Ft.
2nd Floor Balcony	246 Sq. Ft.
2nd Floor Veranda	215 Sq. Ft.
TOTAL AREA	8,902 Sq. Ft.

5 Bedrooms, 5 Baths,
Study, 3 Car Garage
©Kington Homes