



O s p r e y

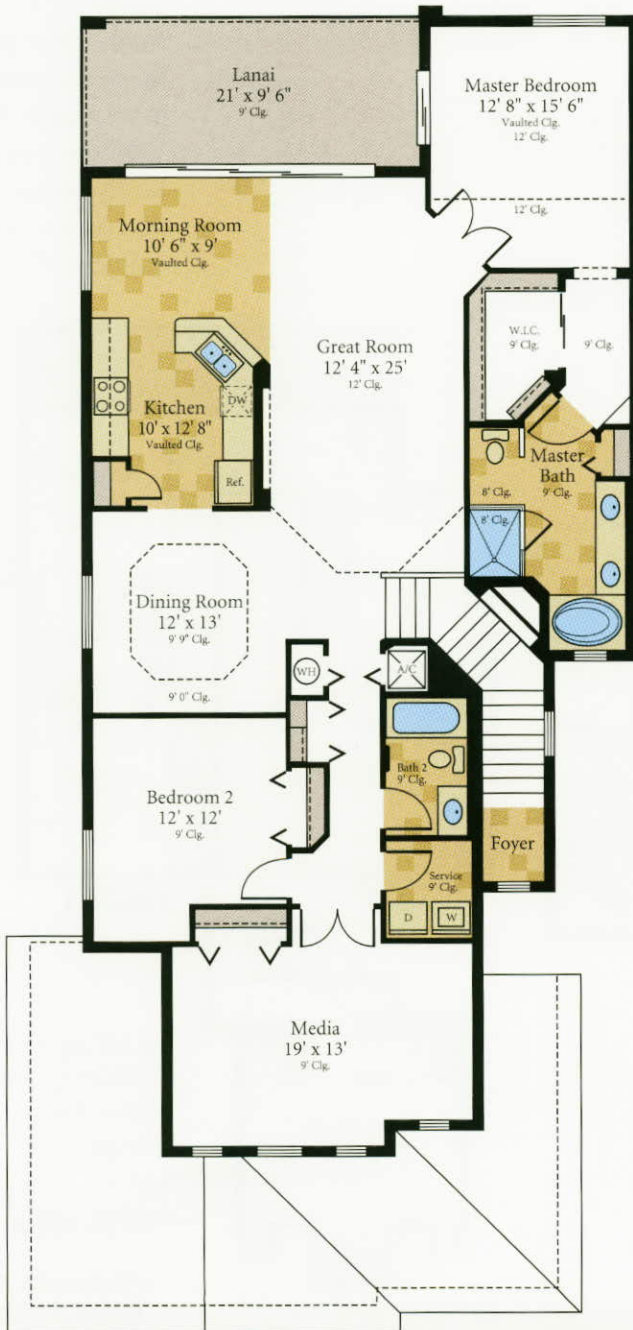
CENTEX HOMES - TURTLE POINTE



Centex Homes, a subsidiary of Centex Corp., a 50-year-old firm traded

on the NYSE, has ranked for more than 25 years among the nation's top 10 builders. The firm has been designing communities and building homes in SW Florida since 1989 and is proud to bring its record for innovative design, master craftsmanship, attention to detail and exceptional value to West Bay Club.

Homes By
CENTEX
Built On Excellence



Living Area	2,040 Sq. Ft.
Lanai	200 Sq. Ft.
Garage	225 Sq. Ft.
TOTAL AREA	2,465 Sq. Ft.

2 Bedrooms, 2 Baths, Media, Breakfast Room, 2 Car Garage
©Centex Homes