



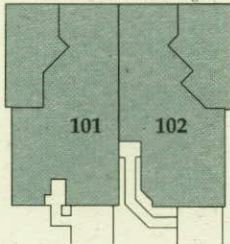
Portobello V

Three Bedroom, Two Bath,
Courtyard Villa

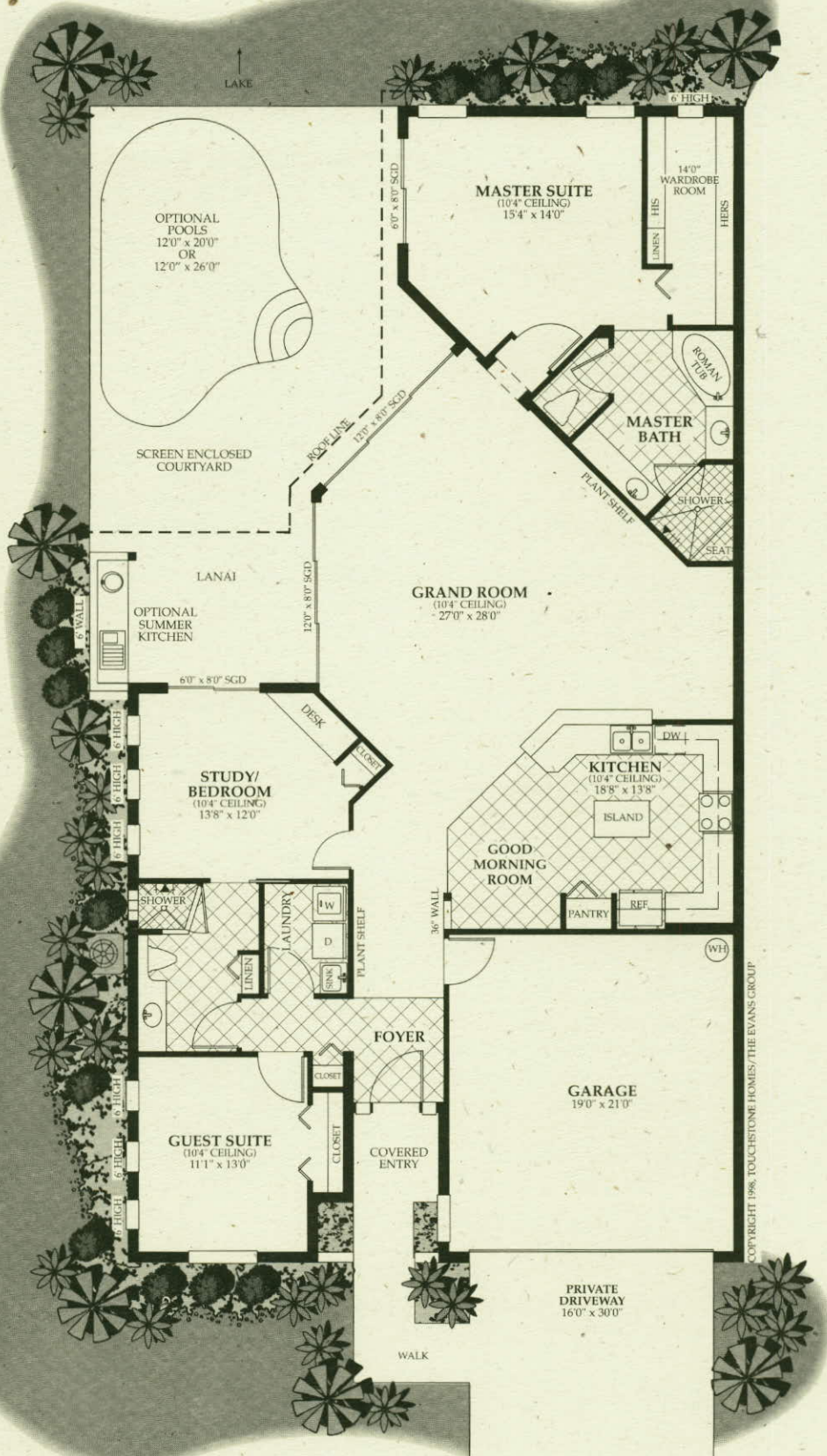
Air Conditioned	1,956 sq. ft.
Lanai/Loggia	166 sq. ft.
Courtyard	542 sq. ft.
Two-Car Garage	400 sq. ft.
Total	3,064 sq. ft.

Building Layout

Shown here is unit #101.
Unit #102 is reverse image.



Scale
1" = 11'



COPYRIGHT 1996, TOUCHSTONE HOMES/THE EVANS GROUP