

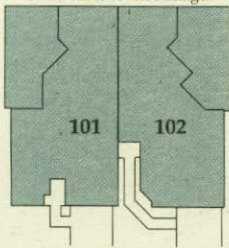


Portobello III

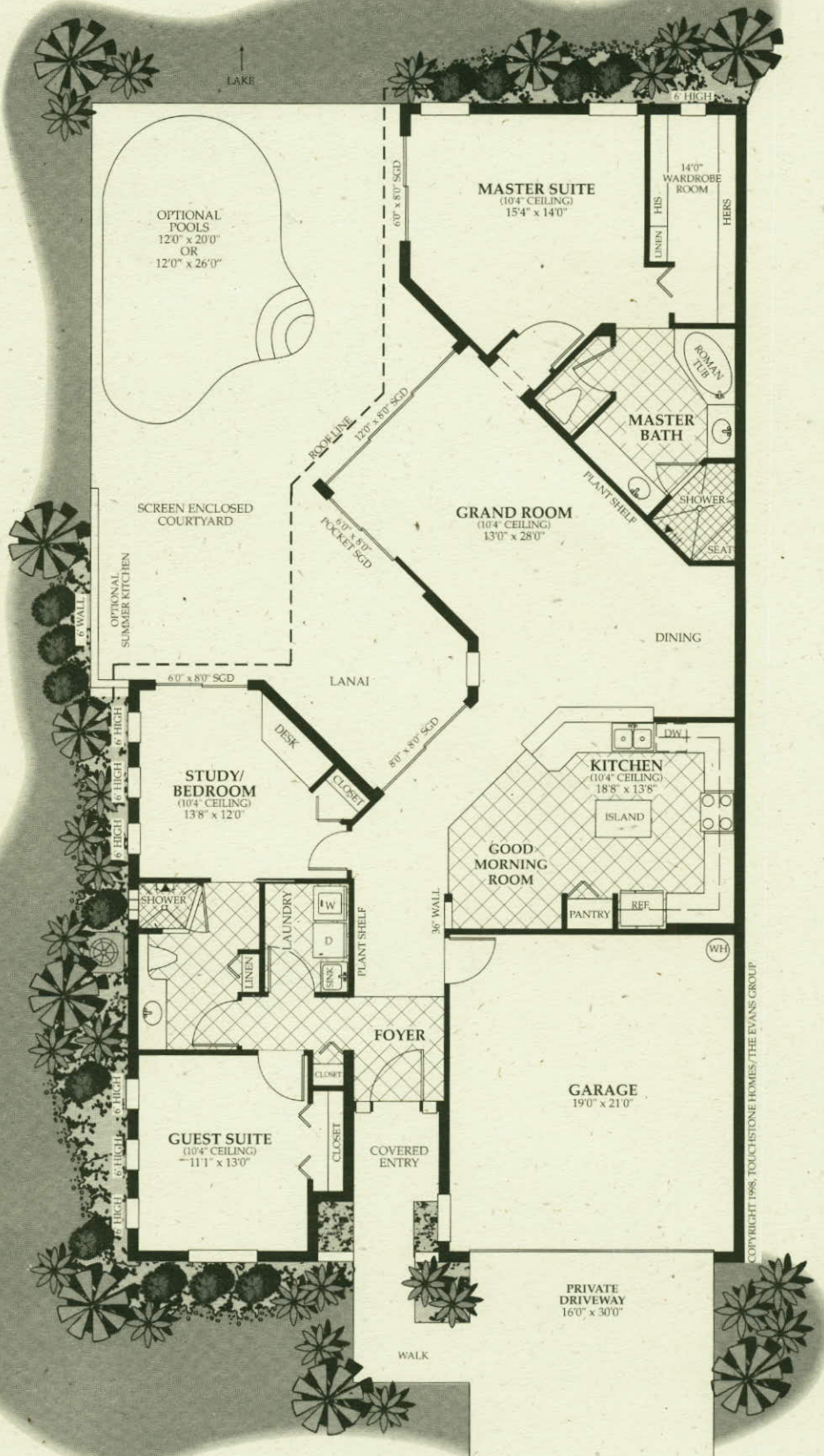
Three Bedroom, Two Bath,
Courtyard Villa

Air Conditioned	1,844 sq. ft.
Lanai/Loggia	146 sq. ft.
Courtyard	674 sq. ft.
Two-Car Garage	400 sq. ft.
Total	3,064 sq. ft.

Building Layout
Shown here is unit #101.
Unit #102 is reverse image.



Scale
1" = 11'



COPYRIGHT 1998, TOUCHSTONE HOMES, THE EVANS GROUP