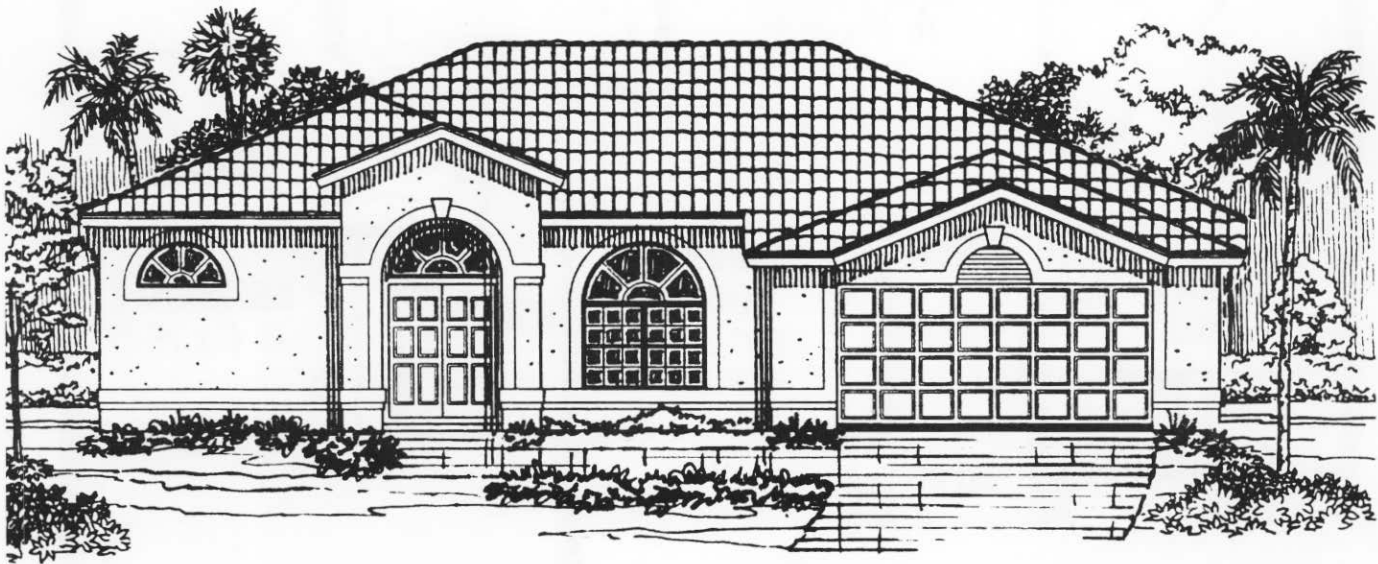
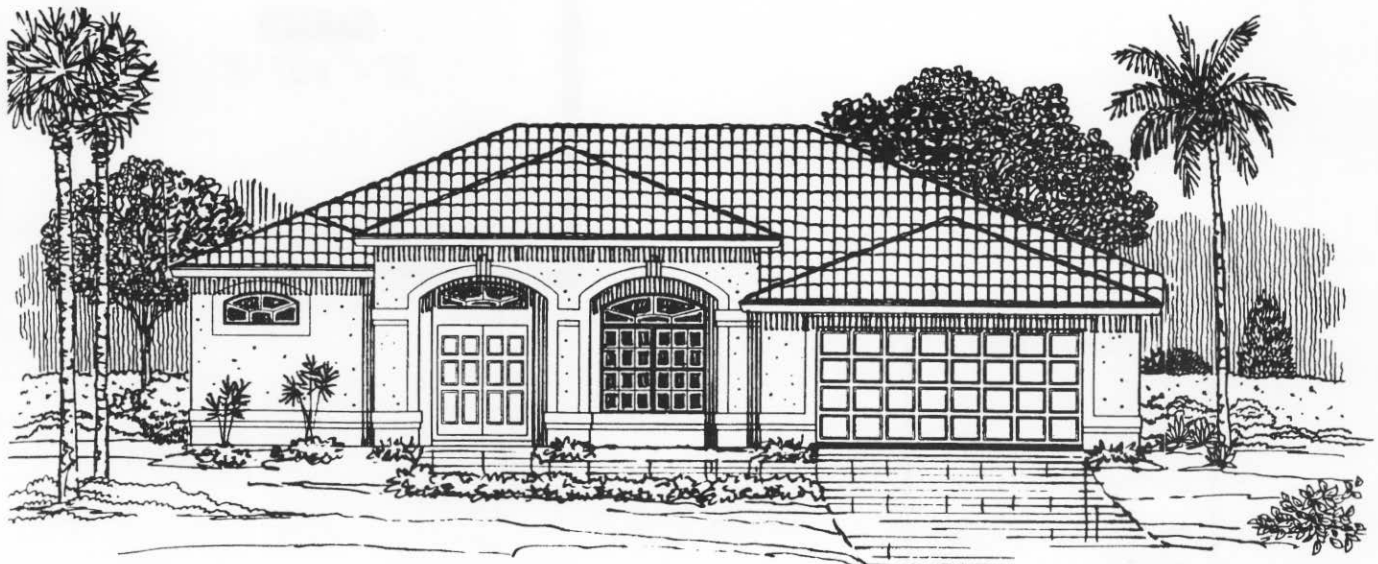


ELEVATION 'A'



ELEVATION 'B'



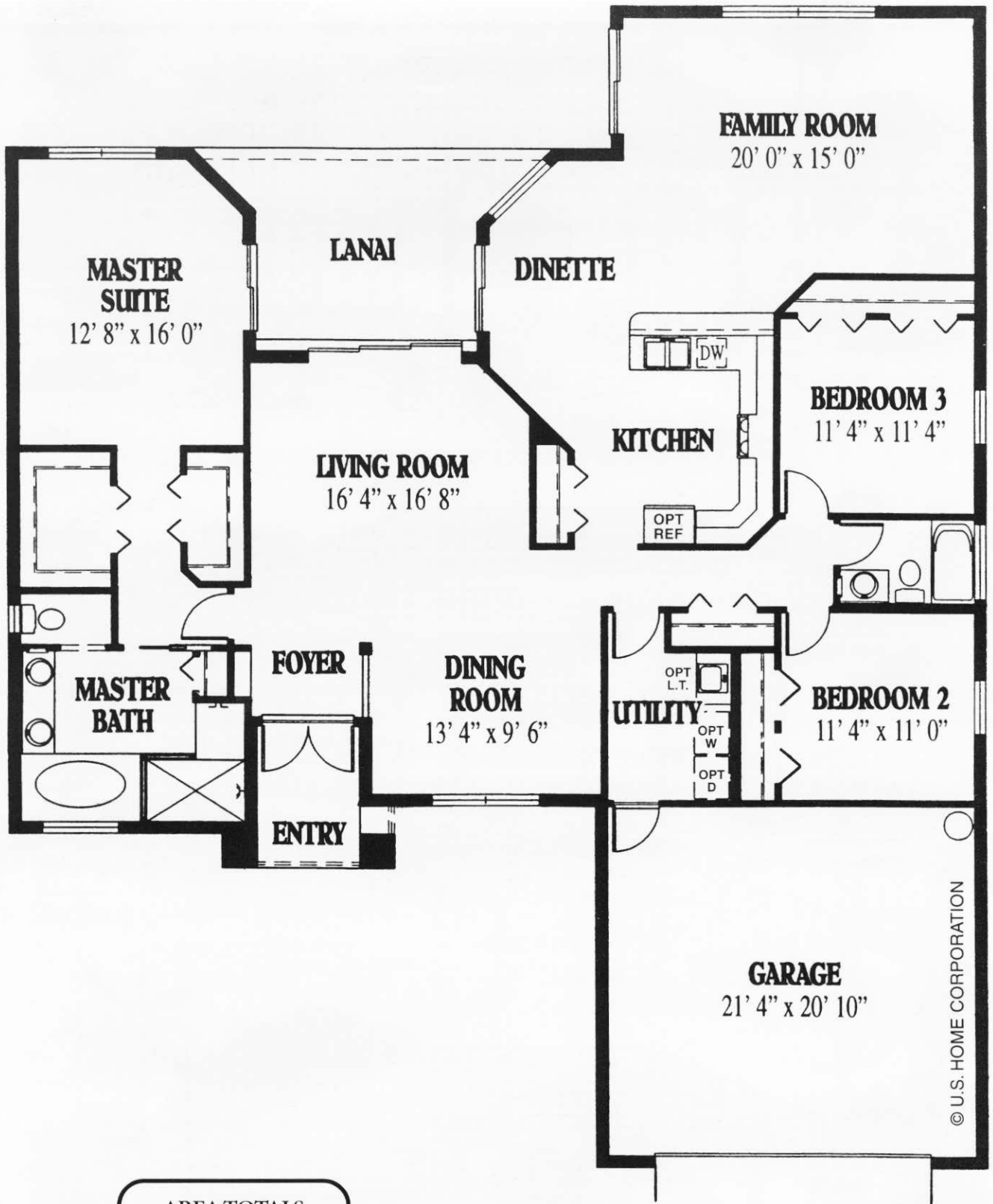
ELEVATION 'C'

Artist rendition only. Window sizes and locations, room sizes and dimensions are approximate and may vary. Prices and features subject to change without notice.

US·HOME[®]

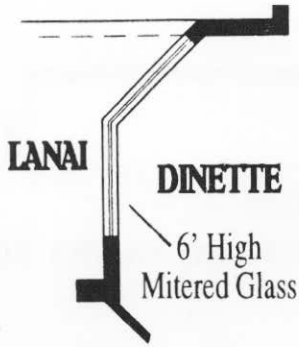
The Cayman V

The Cayman V



AREA TOTALS	
WIDTH	56' 8"
DEPTH	68' 4"
LIVING AREA	2186
ENTRY	58
GARAGE	487
LANAI	172
TOTAL	2903

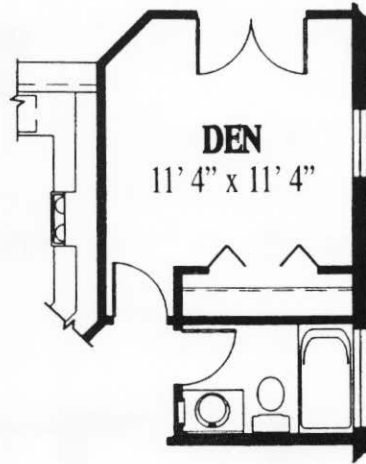
Offers, incentives and seller contributions are subject to certain terms, conditions and restrictions which may include using designate



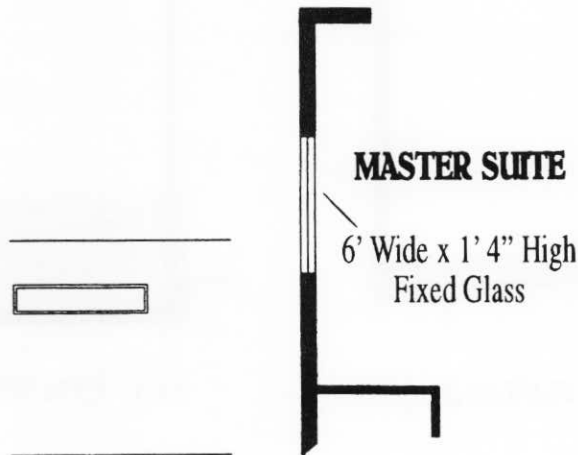
#1 MIRRORED GLASS AT DINETTE



#2 KITCHEN DESK



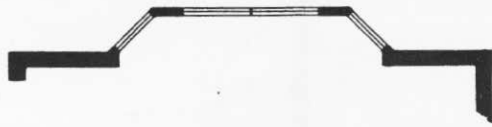
#3 DEN IN LIEU OF BEDROOM 3



#4 FIXED GLASS IN MASTER SUITE

Options shown are not included in the base price of the home.
For pricing information, please consult with your salesperson.

More Options



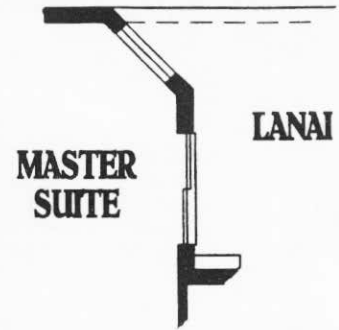
#5 BAY WINDOW AT FAMILY ROOM



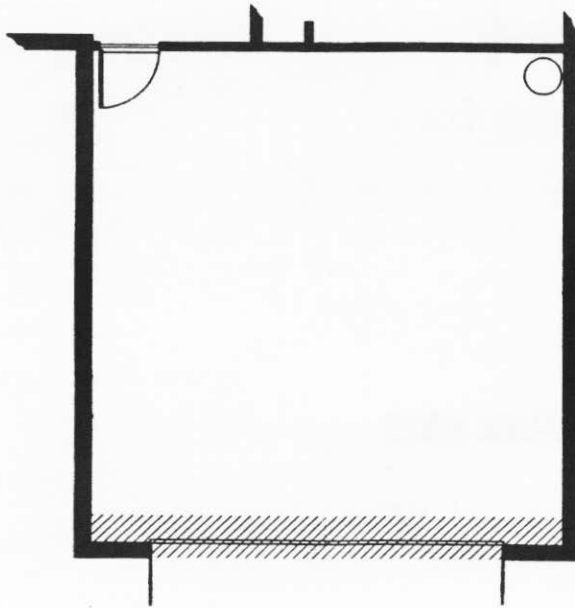
#6 BUILT-IN AT FAMILY ROOM



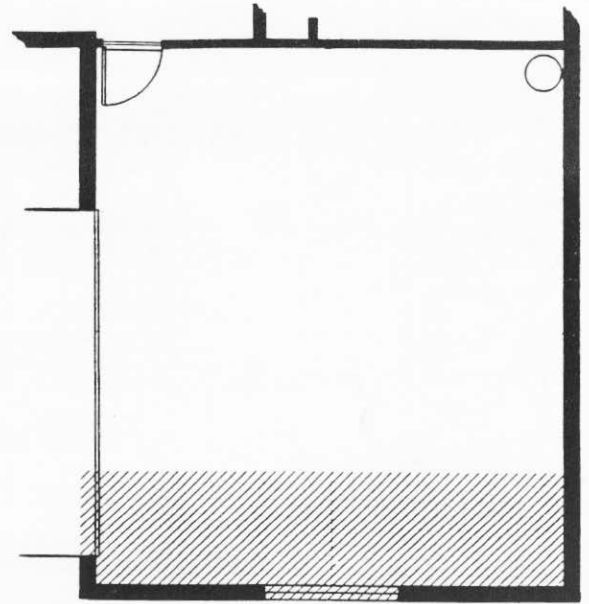
#7 BAY WINDOW AT MASTER SUITE



#8 WINDOW IN MASTER SUITE



#9 2' EXTENDED GARAGE



#10 COURTYARD GARAGE



*Nation's Only 3-Time Winner
National Builder of the Year*

