

S  
T.  
C  
H  
A  
R  
L  
E  
S  
2  
1  
5  
0



ELEVATION 'A'



ELEVATION 'B'



ELEVATION 'C'

3 Bedroom, 2 Bath & Den

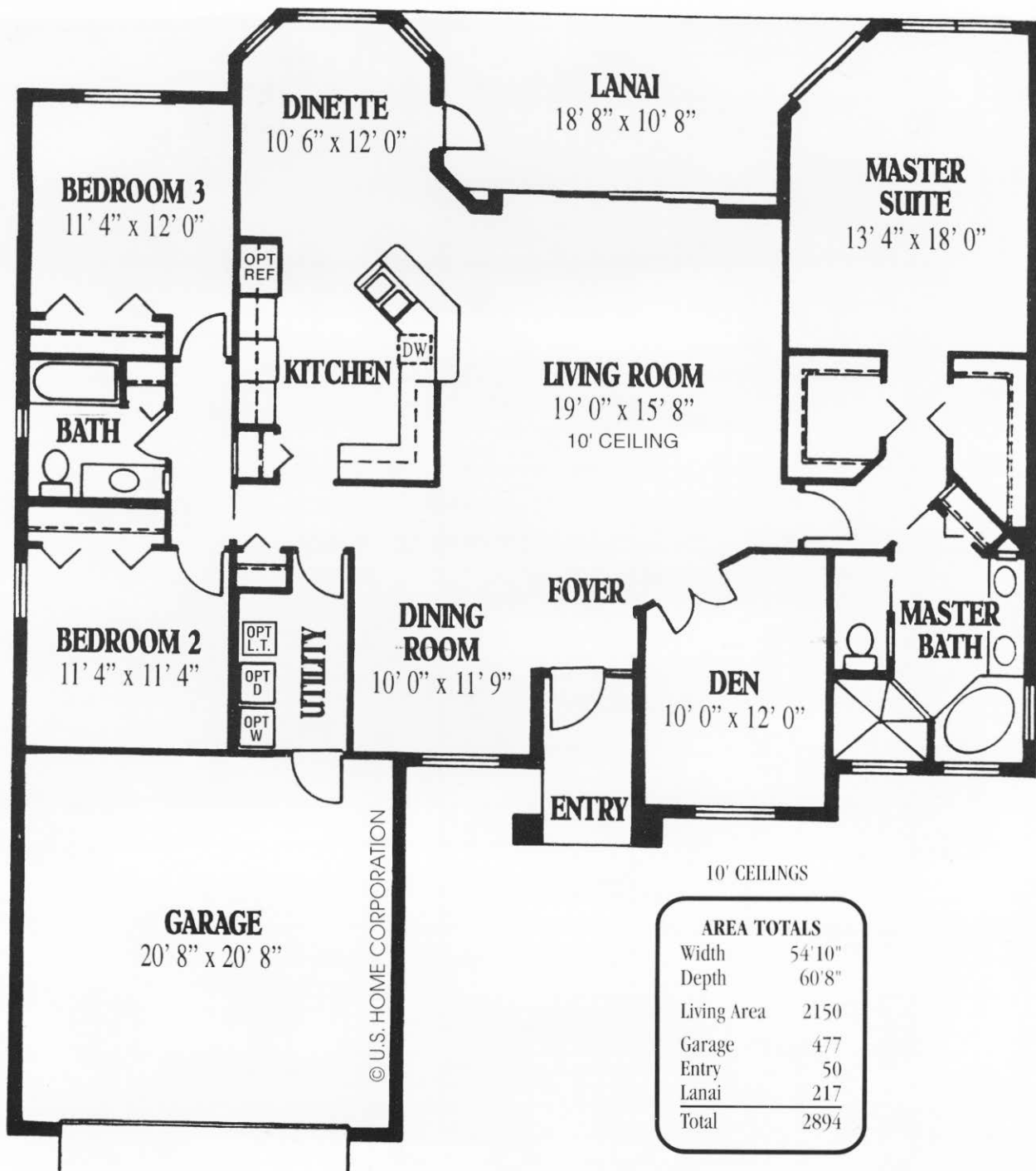
 **Rutenberg  
Homes**

A DIVISION OF US HOME CORPORATION

© 1993 U.S. HOME CORPORATION



# ST. CHARLES 2150



The St. Charles 2150 floor plan is a larger version of the St. Charles V, with plenty of the same great features and lots of enticing options available. A spectacular covered entry takes you in to the combined dining and living area, with a cozy den directly off that. A bay window in the dinette area gives a panoramic view of the backyard or an easy step out the side door lets you relax on the large lanai. Roomy baths and bigger than usual utility also add to the qualities of this home.



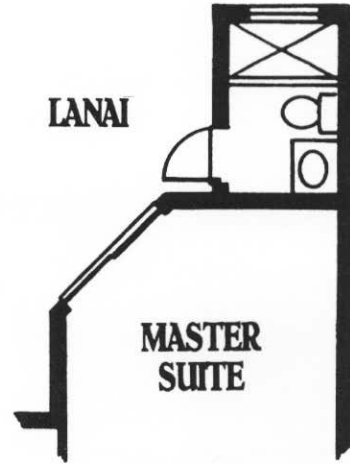
A DIVISION OF US HOME CORPORATION

ALL DIMENSIONS ARE APPROXIMATE AND MAY VARY WITH THE ACTUAL CONSTRUCTION.



**BEDROOM 3**

**2' EXTENDED BEDROOM 3**  
Additional Living Area 31' sq. ft.



**LANAI**

**MASTER SUITE**

**POOL BATH AT BACK OF HOUSE**  
Additional Living Area 55' sq. ft.



**BEDROOM 3**  
12' 4" x 12' 0"

**BEDROOM 2**  
12' 4" x 11' 4"

**GARAGE**  
21' 8" x 20' 8"



**MASTER SUITE**

13' 4" x 20' 0"

**BAY WINDOW AT MASTER SUITE**  
Additional Living Area 15' sq. ft.



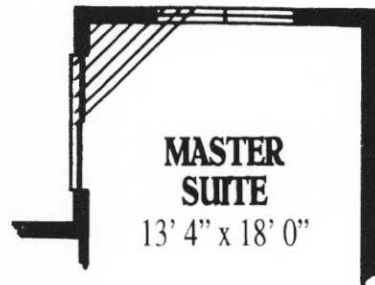
**MASTER SUITE**

13' 4" x 20' 0"

**FULL LENGTH BAY WINDOW AT MASTER SUITE**  
Additional Living Area 40' sq. ft.



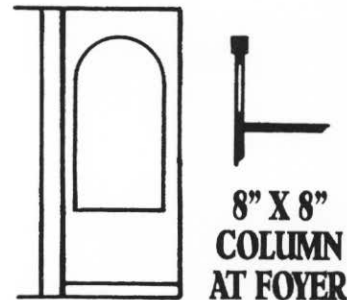
**CLOSET AT DEN**



**MASTER SUITE**

13' 4" x 18' 0"

**EXTENDED CORNER AT MASTER SUITE**  
Additional Living Area 14' sq. ft.



**8" X 8" COLUMN AT FOYER**

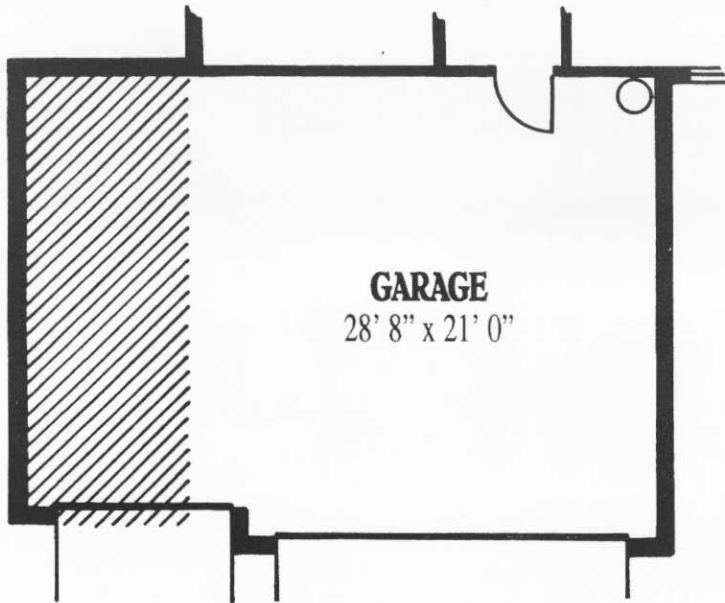
**1' EXTENDED SIDE OF HOUSE**  
Additional Living Area 38' sq. ft.



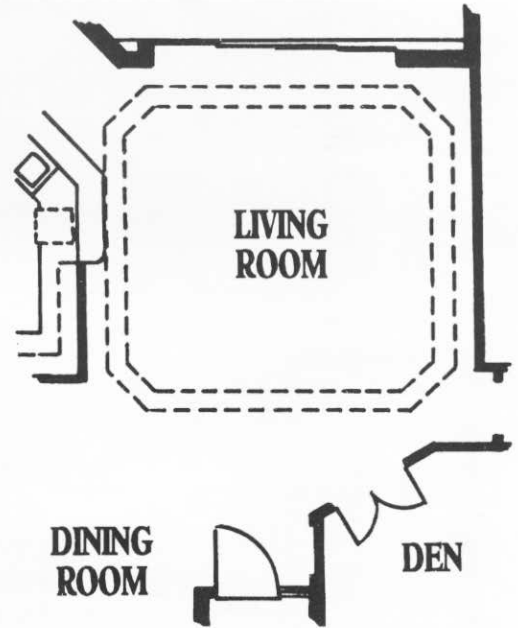
**LAUNDRY TUB IN UTILITY**

**P  
O  
P  
U  
L  
A  
R  
  
O  
P  
T  
I  
O  
N  
S**

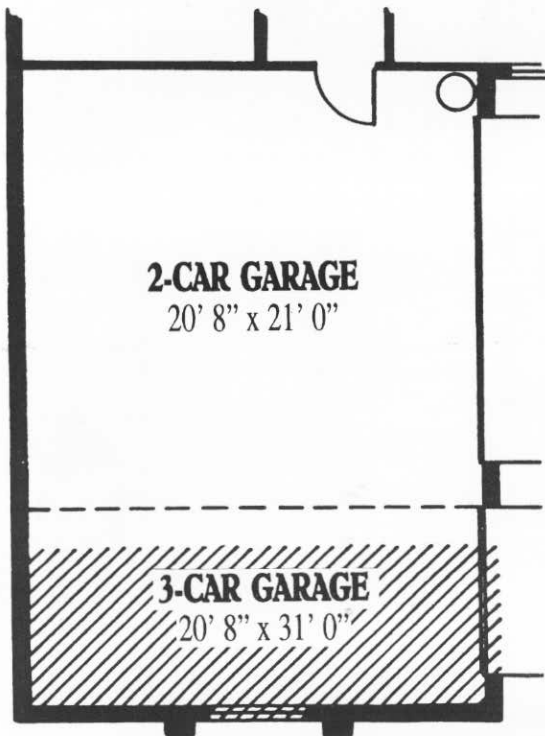
**POPULAR  
OPTIONS**



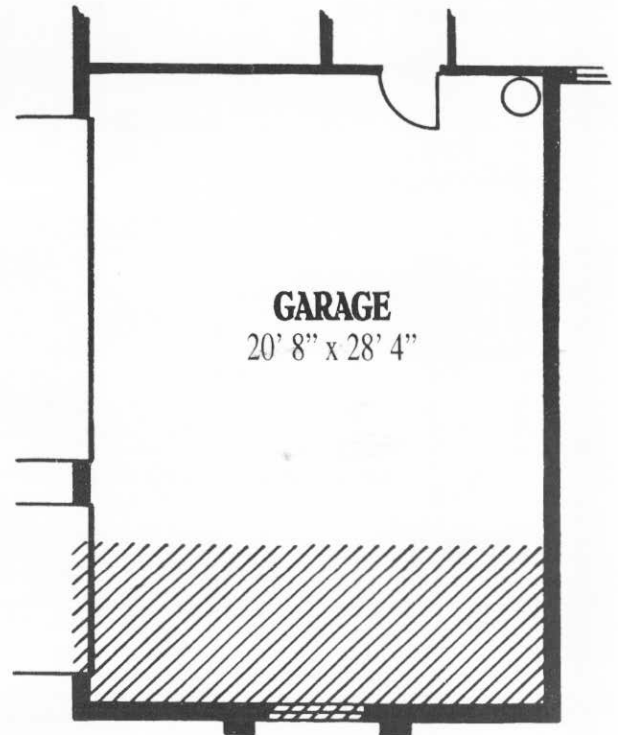
**3-CAR GARAGE**  
Additional Garage Area 178' sq. ft.



**TRAY CEILING AT LIVING ROOM**



**2-CAR OR 3-CAR COURTYARD GARAGE**  
2-Car Garage Area 476' sq. ft.  
3-Car Garage Area 660' sq. ft.



**3-CAR SIDE LOAD GARAGE**  
Additional Garage Area 184' sq. ft.

