

**D
O
V
E
R
V**



AH



BH



CH

2 Bedroom, 2 Bath & Den or 3 Bedroom Option

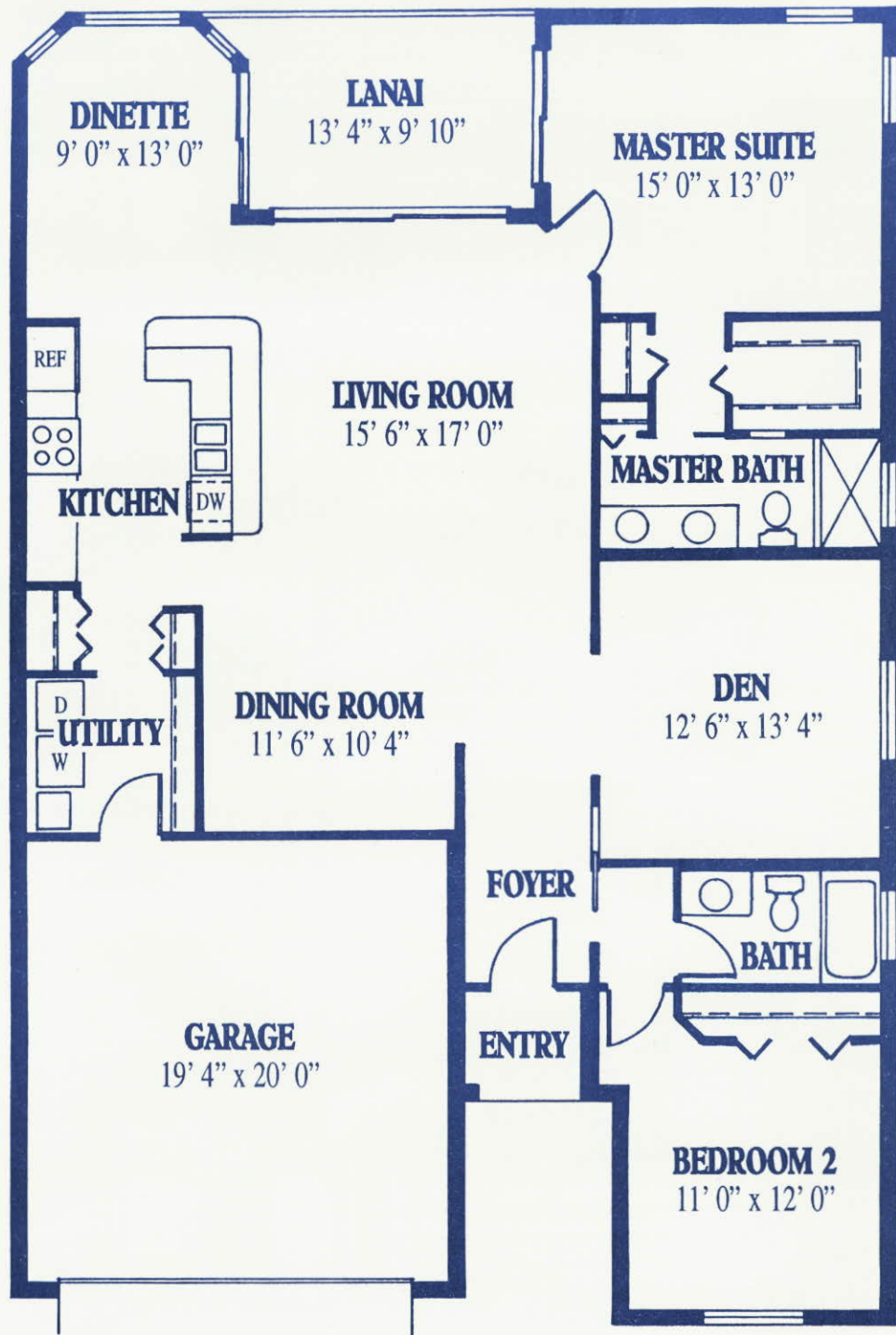


Rutenberg Homes

A DIVISION OF U.S. HOME CORPORATION



DOVER



SQUARE FOOTAGE

Living Area	1697
Garage	422
Entry	26
Lanai	122
Total	2267



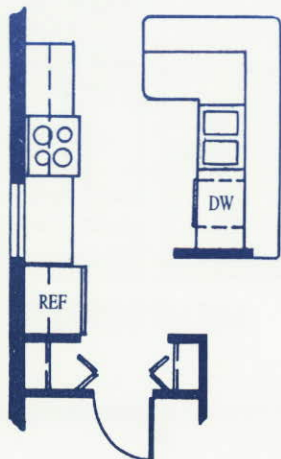
You'll find all the comforts you need in our Dover floor plan. This 2 bedroom, 2 bath home with den, or 3 bedroom option, offers an array of features, including sliding glass doors in the dinette, living room and master suite areas that lead to the under roof lanai, an additional family room option, and beautiful entertainment center option. This well thought out design is open and airy – perfect for a growing family or those that want plenty of space.

 **Rutenberg Homes**
A DIVISION OF U.S. HOME CORPORATION

ALL DIMENSIONS ARE APPROXIMATE AND MAY VARY WITH THE ACTUAL CONSTRUCTION.



KITCHEN LAYOUT

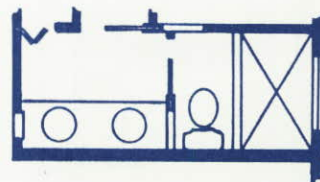


MASTER SUITE
15' 0" x 13' 0"

MASTER SUITE & BATH
Additional Living
Area 33' sq. ft.
(New Den size - 12' 4" x 12' 0")



**BEDROOM 3
IN LIEU OF DEN**
12' 4" x 11' 0"



**POCKET DOOR
IN MASTER BATH**



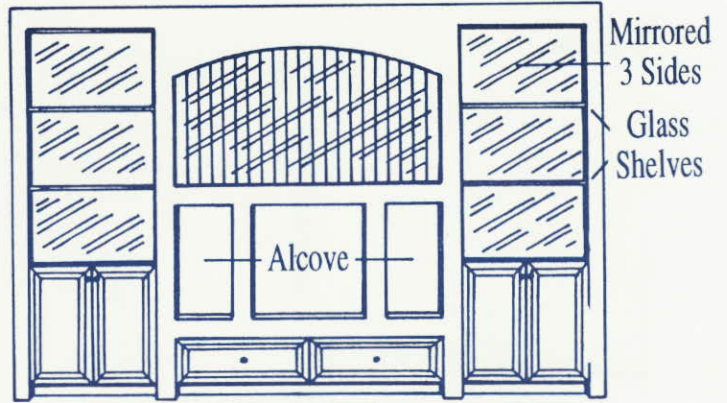
**BAY WINDOW
AT BEDROOM 2**
Additional Living
Area 22' sq. ft.



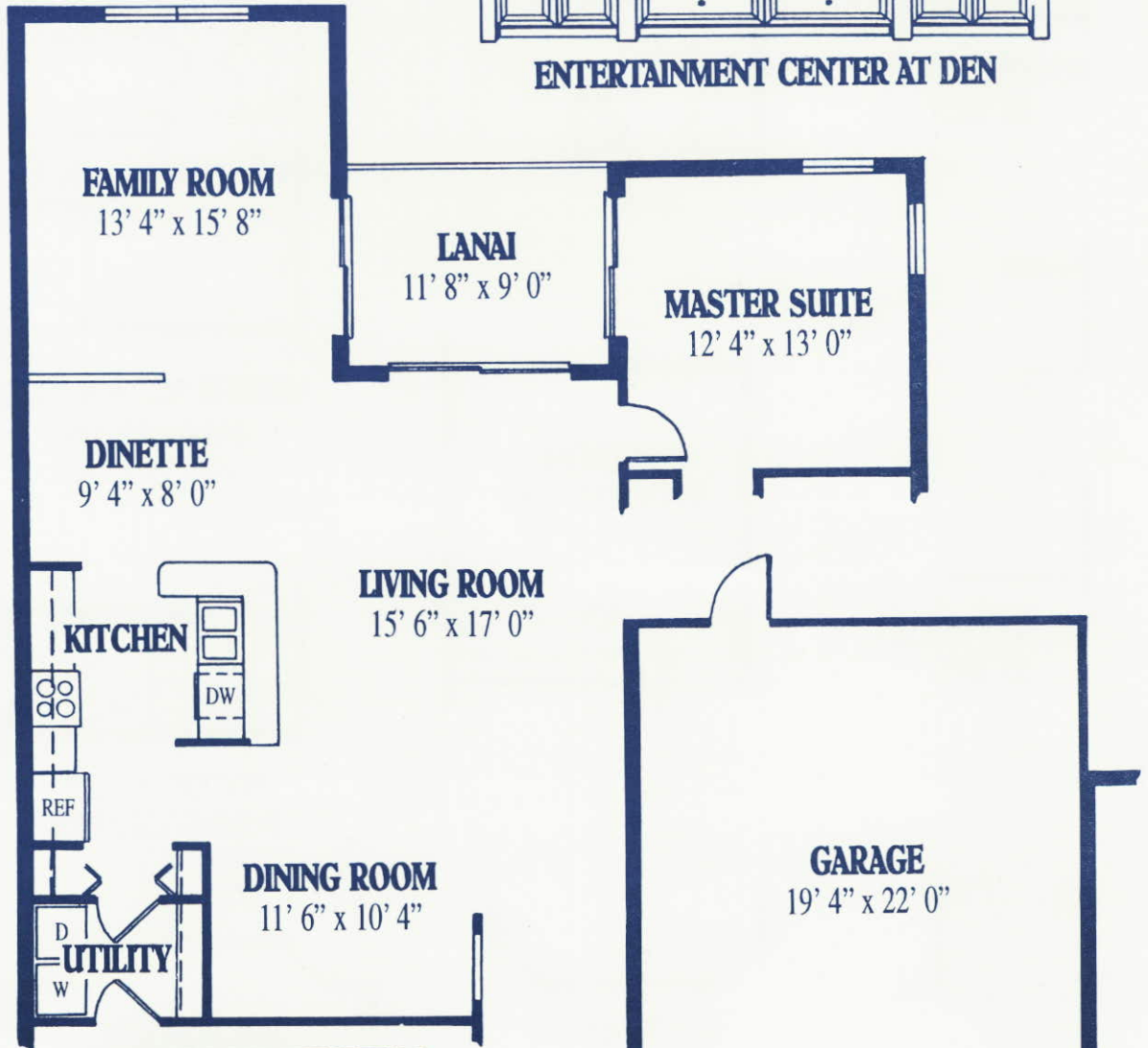
**BAY WINDOW
AT MASTER SUITE**
Additional Living
Area 19' sq. ft.

**POPULAR
OPTIONS**

**BAY WINDOW
AT FAMILY ROOM**
Additional Living
Area 20' sq. ft.



ENTERTAINMENT CENTER AT DEN



**FAMILY ROOM, KITCHEN &
MASTER SUITE LAYOUT**

Additional Living
Area 143' sq. ft.
Lanai Area 105' sq. ft.

2' EXTENDED GARAGE

Additional Garage
Area 41' sq. ft.



ORAL REPRESENTATIONS CANNOT BE RELIED UPON AS CORRECTLY STATING REPRESENTATIONS OF THE DEVELOPER.
FOR CORRECT REPRESENTATIONS REFERENCE SHOULD BE MADE TO THIS BROCHURE AND TO THE DOCUMENTS.

Jan. 1998
Lee/Collier