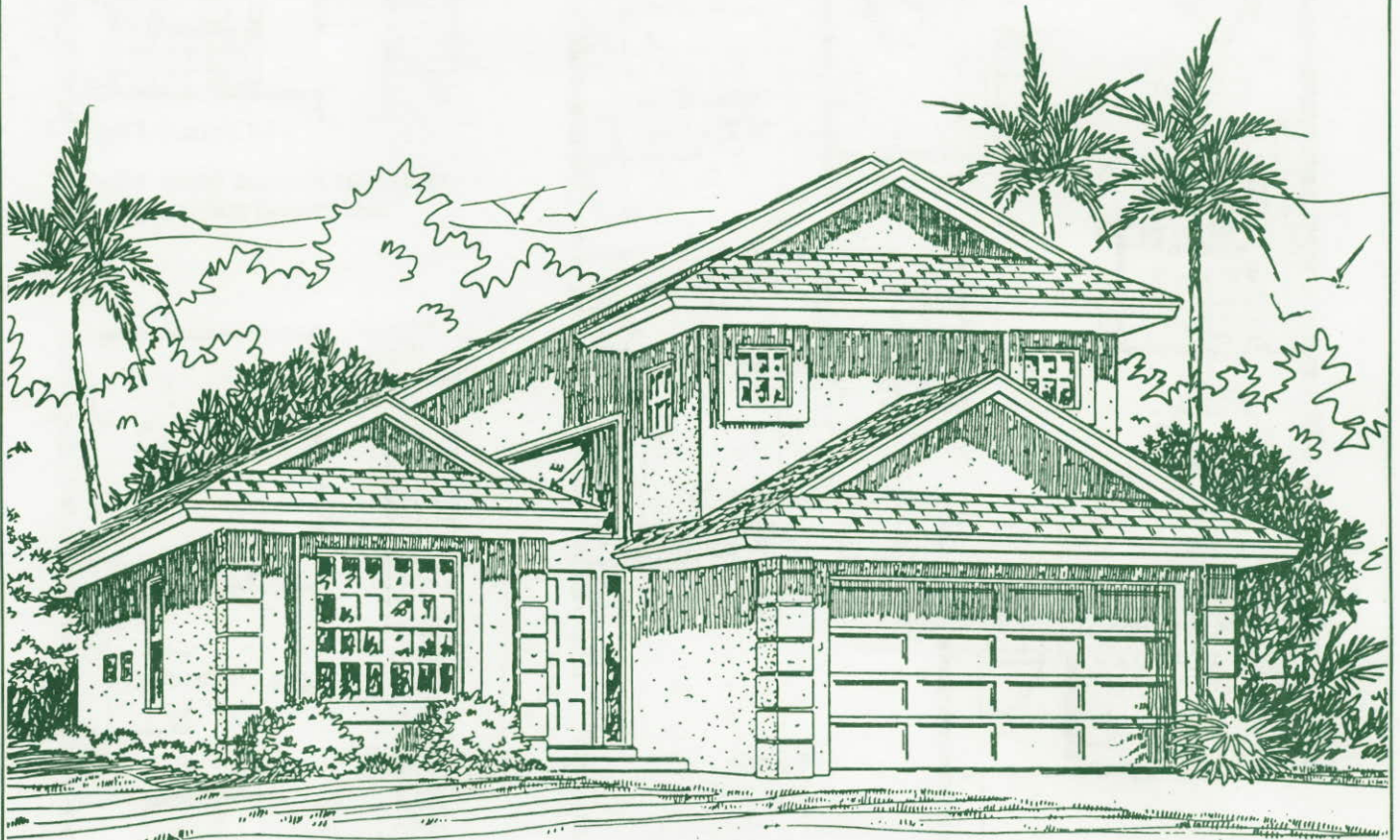


The Martinique

4 Bedroom/2 1/2 Bath

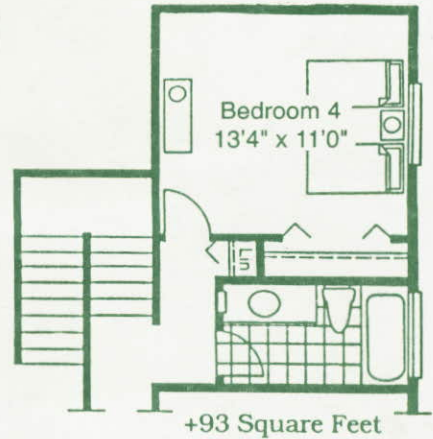
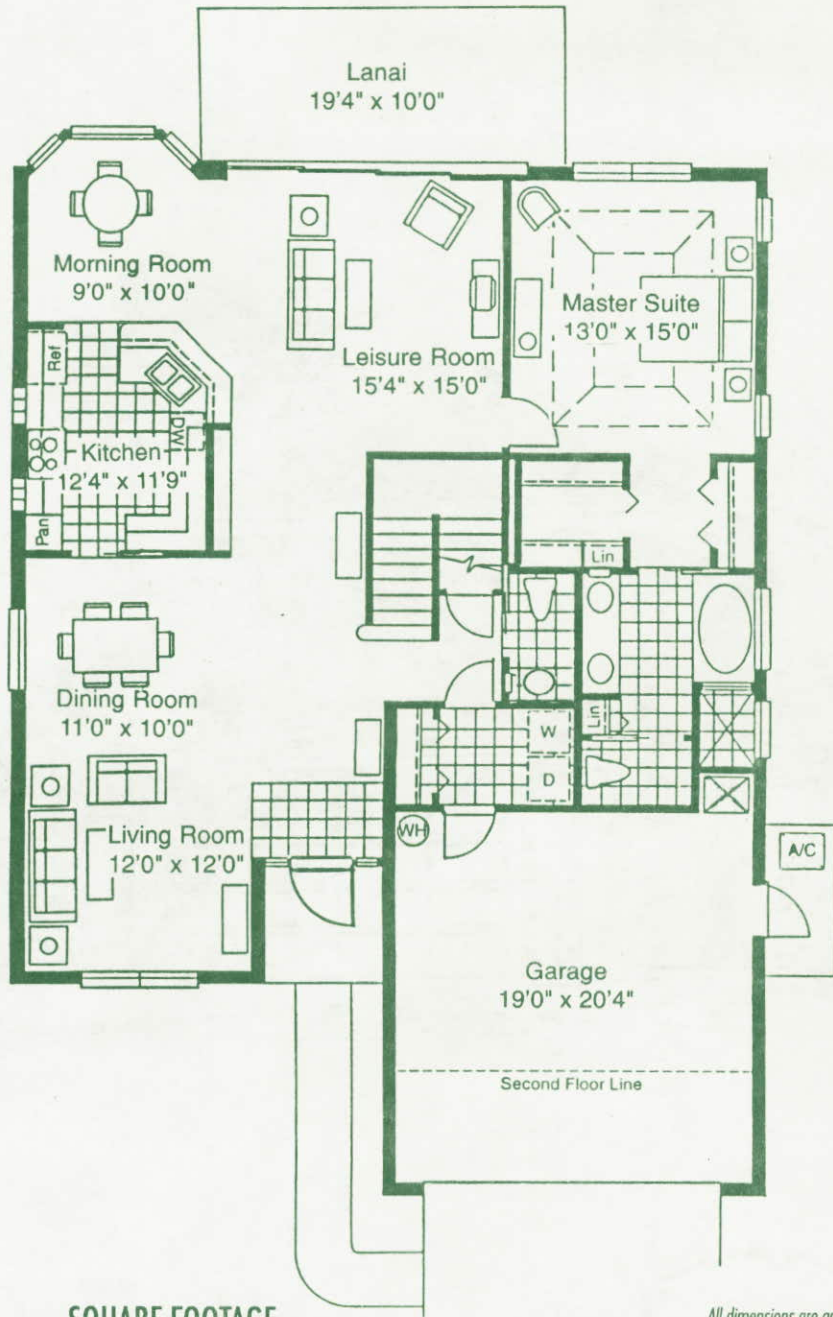



The Islands
AT THREE OAKS

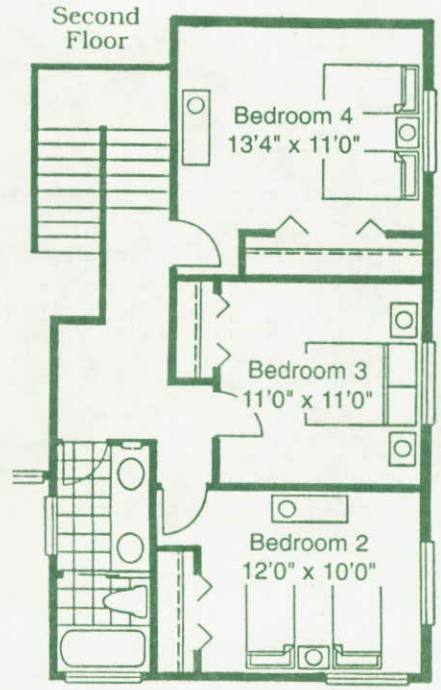
Shown above is one of the the elevations available for this home. Please ask your new home consultant about other choices.

The Martinique

4 Bedroom/2 1/2 Bath



**Optional Second Story Plan II
Additional Bathroom**



PLAN I

SQUARE FOOTAGE

Living Area	2,193
Lanai	194
Garage	434
Entry	40
Total	2,861

Square footage of entry will vary with different elevations.

 Denotes tile or vinyl per specifications in contract

*All dimensions are approximate. We reserve the right to substitute building material, appliances and fixtures of a like kind and quality and to change features, options and architectural details without prior notice.
1997 Southwest Florida Capital Corporation offer is limited. Product availability and prices are subject to change without notice.
Model homes and brochures are only representational.*

