

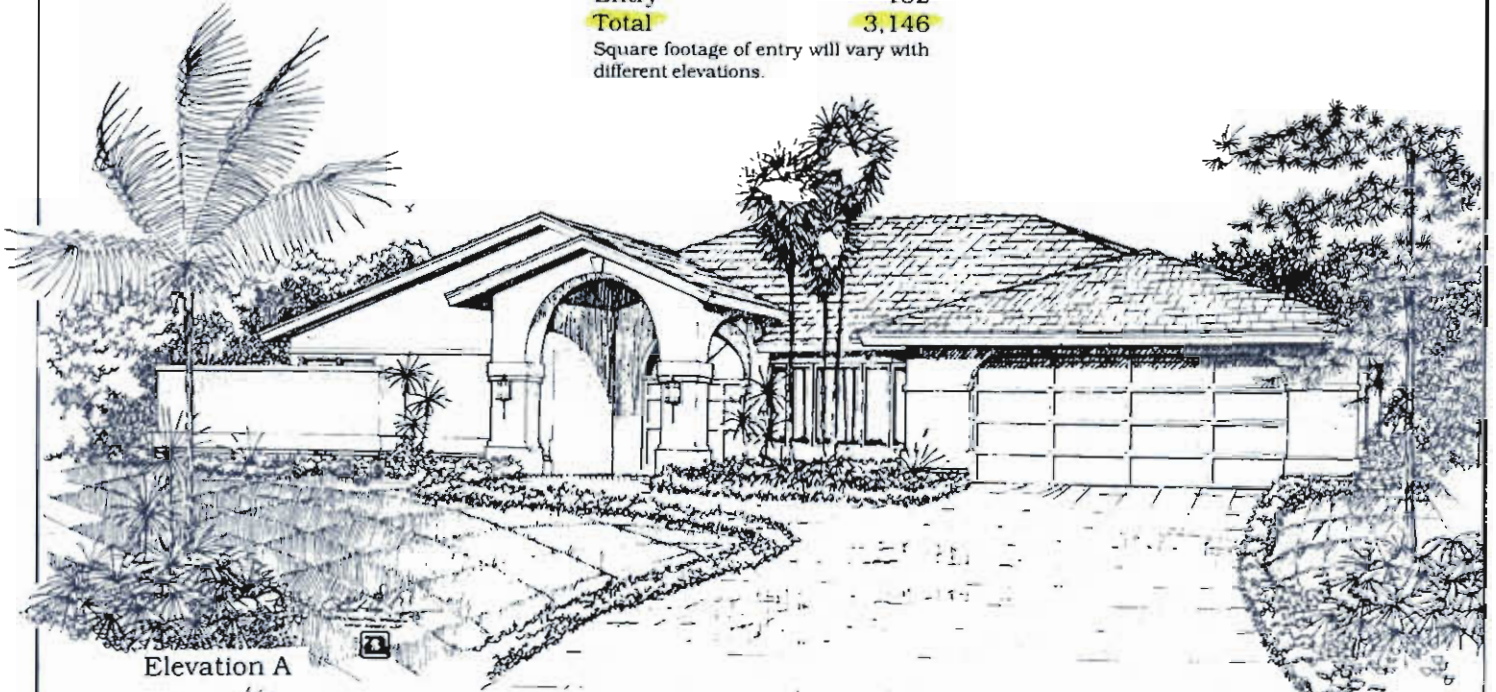
The Grand Cypress

Exterior Elevations

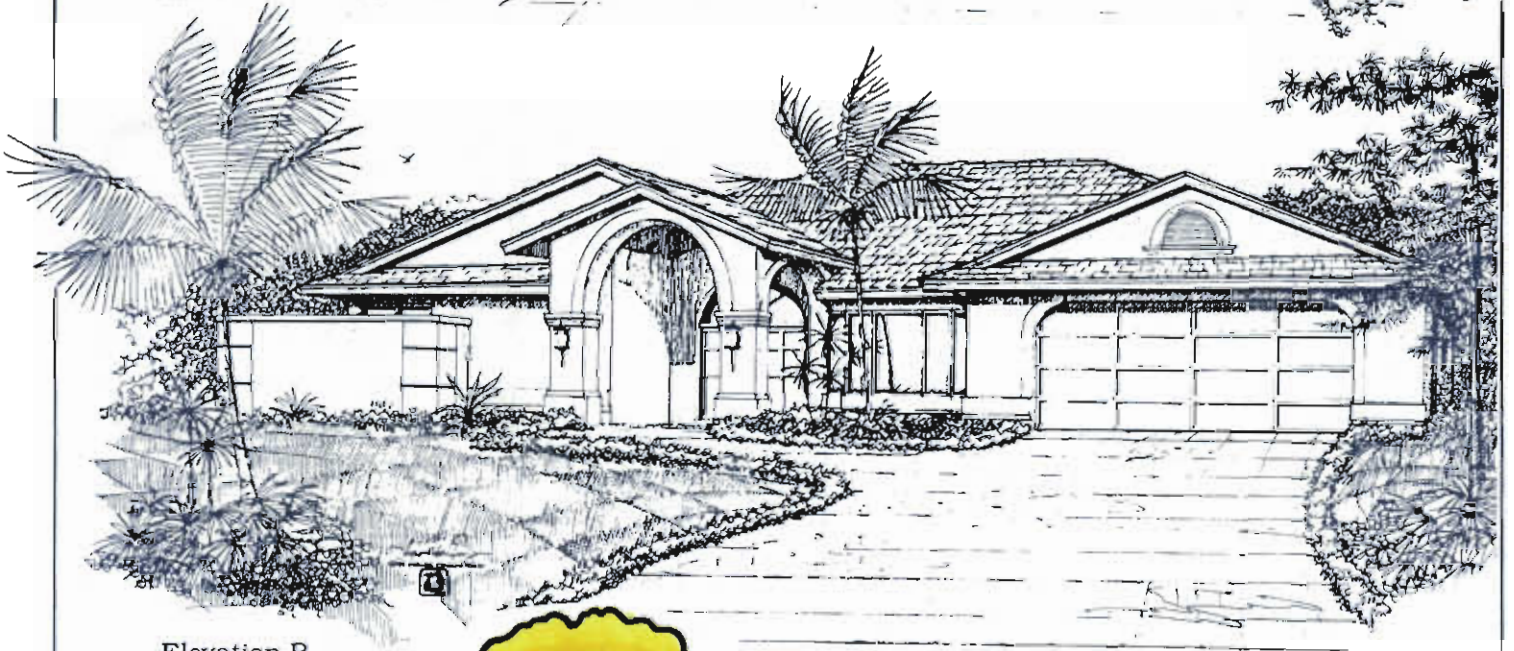
SQUARE FOOTAGE

Living Area	2,222
Lanai	280
Garage	512
Entry	132
Total	3,146

Square footage of entry will vary with different elevations.



Elevation A



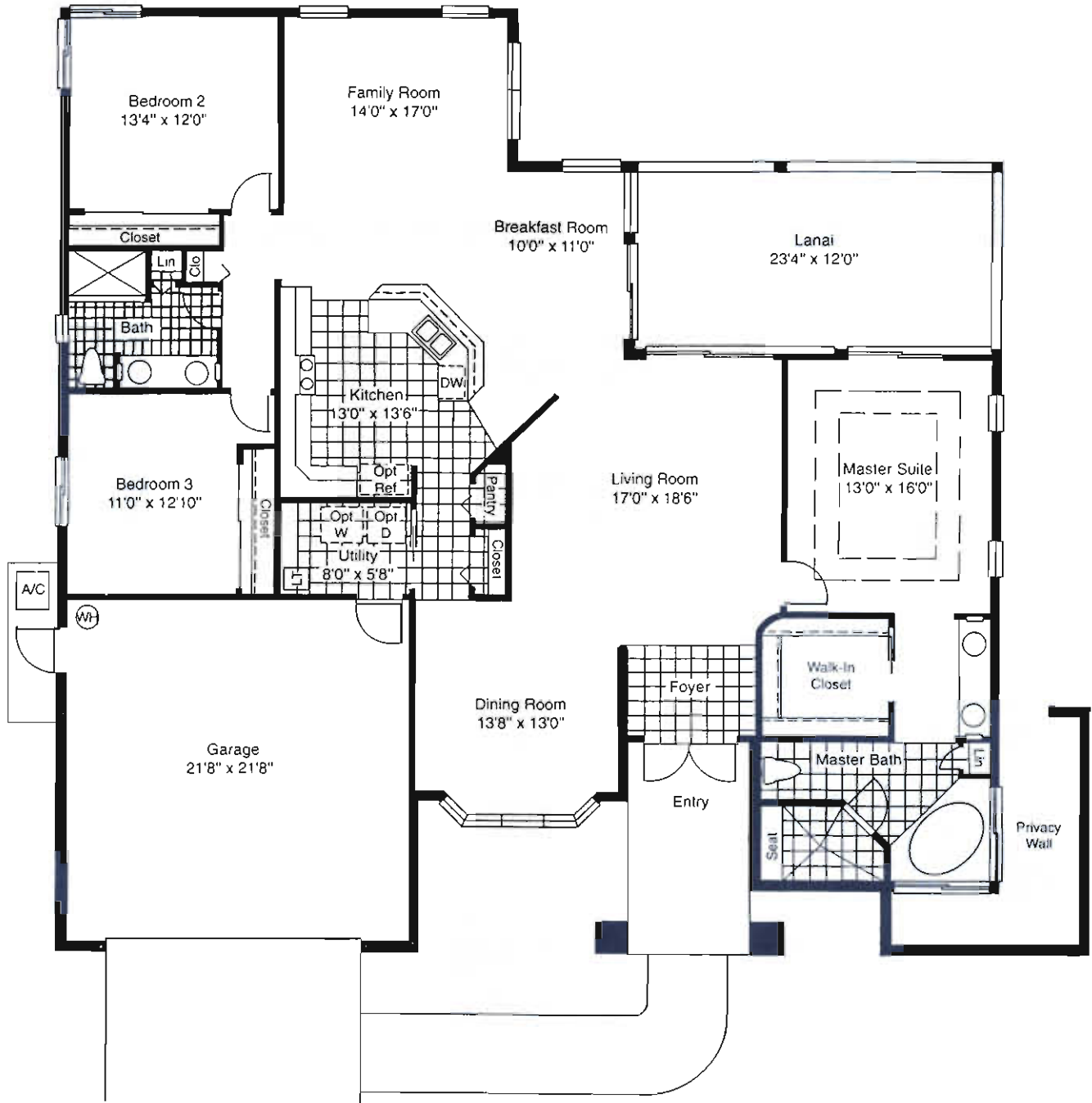
Elevation B



THREE OAKS

The Neighborhood Community

The Grand Cypress



THREE OAKS

All dimensions are approximate. We reserve the right to substitute building material, appliances and fixtures of a like kind and quality and to change features, options and architectural details without prior notice.

1993 Southwest Florida Capital Corporation offer is limited. Product availability and prices are subject to change without notice.

Model homes and brochures are only representational. Houses are built to blue print specifications.