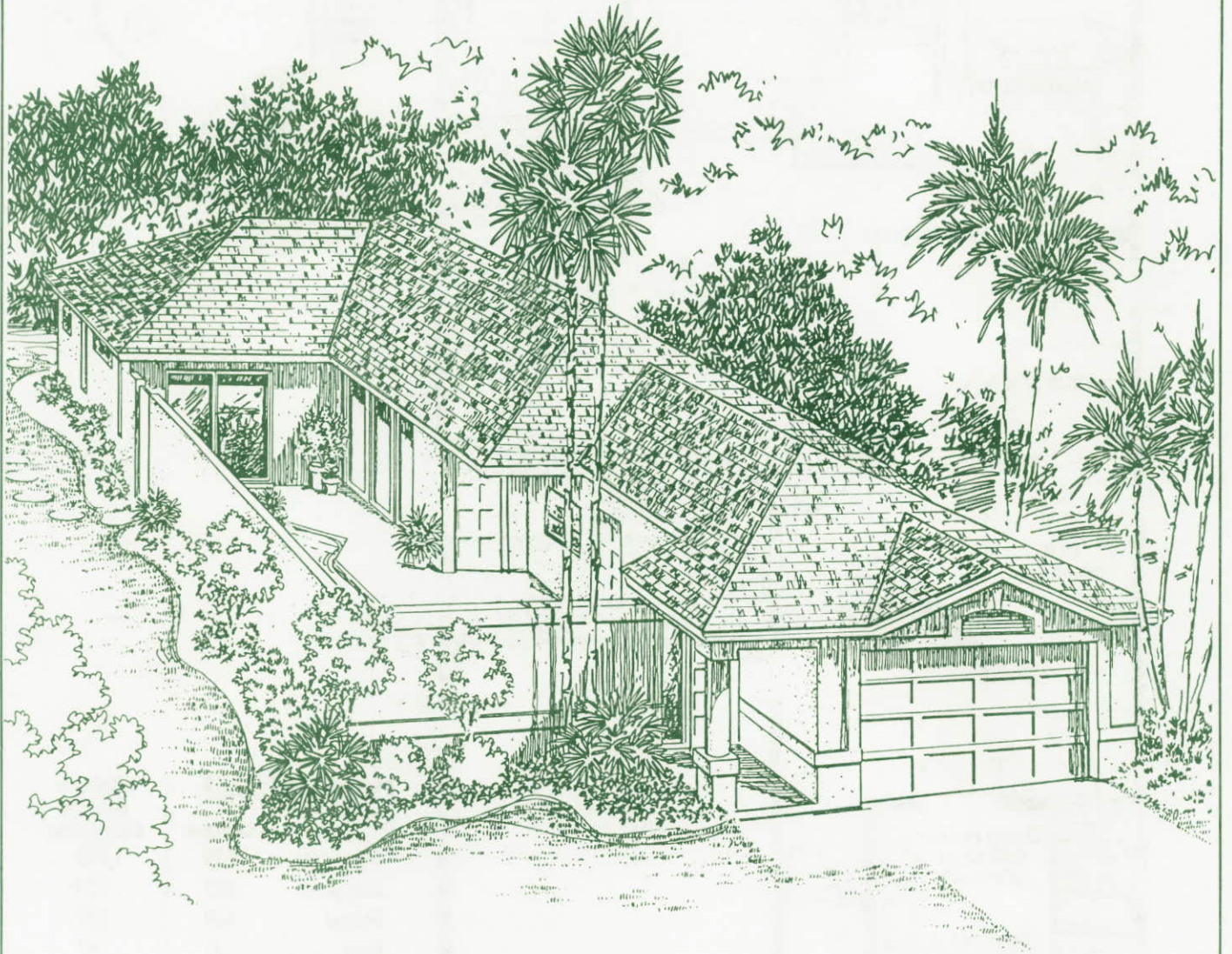


# The Bonaire

\*3 Bedroom/ 2 Bath  
Courtyard Pool Home



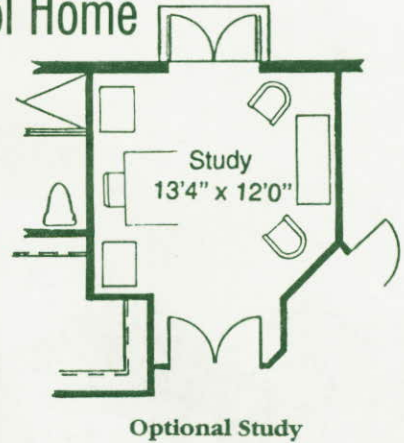
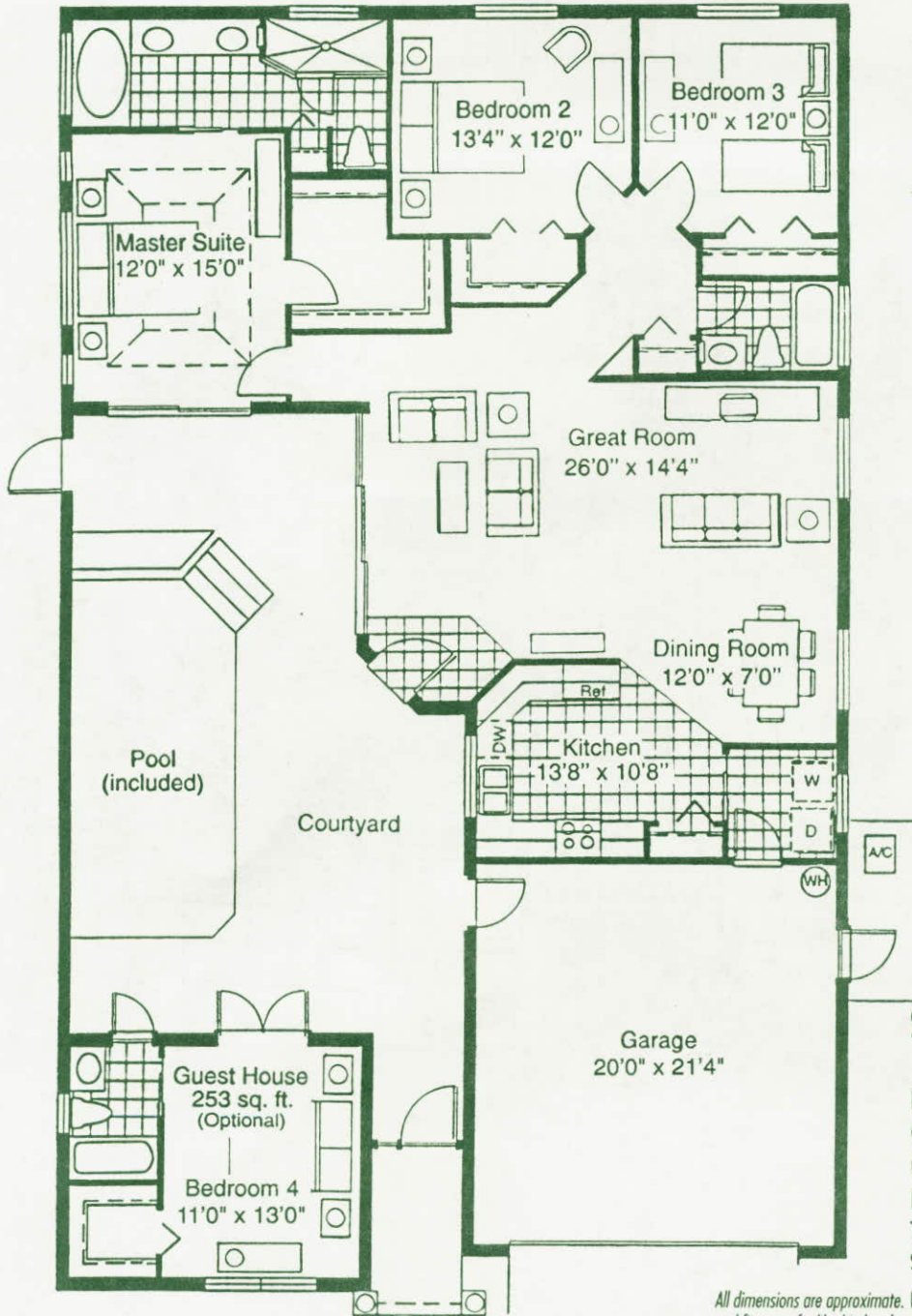
  
*The Islands*  
AT THREE OAKS

*Shown above is one of the elevations available for this home. Please ask your new home consultant about other choices.  
\* Elevation shown is 3 bedroom/ 2 bath model without the Guest House. Ask your new home consultant for Guest House model elevation choices.*



# The Bonaire

## 3 Bedroom/ 2 Bath Courtyard Pool Home



	SQUARE FOOTAGE	
	3 Bedroom	4 Bedroom Including Guest House
Living Area	1,620	1,873
Courtyard	833	720
Garage	469	469
Entry	31	47
<b>Total</b>	<b>2,953</b>	<b>3,109</b>

Square footage of entry will vary with different elevations.

All dimensions are approximate. We reserve the right to substitute building material, appliances and fixtures of a like kind and quality and to change features, options and architectural details without prior notice.

1997 Southwest Florida Capital Corporation offer is limited. Product availability and prices are subject to change without notice.

Model homes and brochures are only representational.



AT THREE OAKS

 Denotes tile or vinyl per specifications in contract