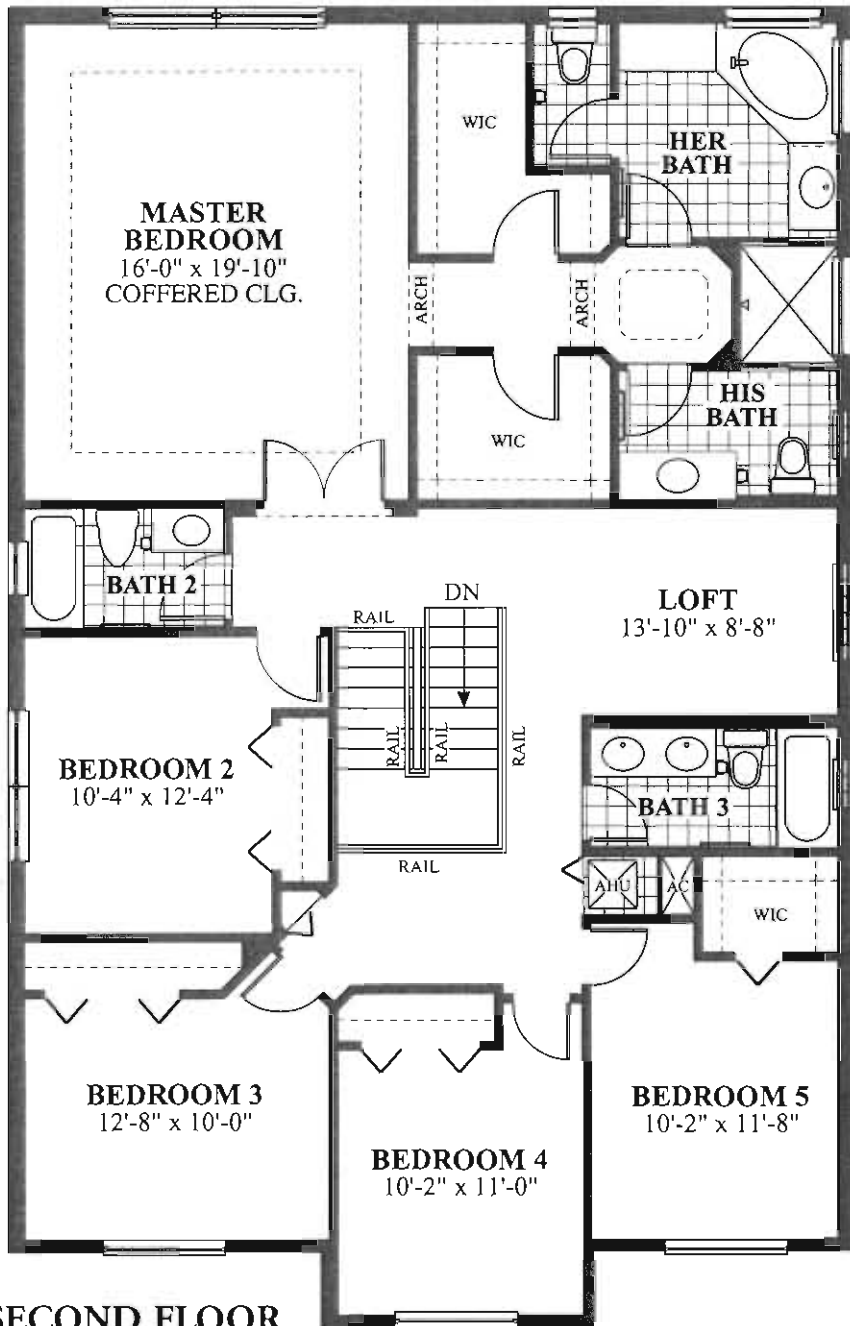


FIRST FLOOR
9' 1" CEILING HGT. UNLESS
OTHERWISE NOTED
ELEVATION A



SECOND FLOOR
 8' 4" CEILING HGT. UNLESS
 OTHERWISE NOTED
ELEVATION A

STARLING

TWO STORY, 5 BEDROOMS, 3 1/2 BATHS,
 LOFT, 2 CAR GARAGE

FIRST FLOOR A/C	1,276 SQ. FT.
SECOND FLOOR A/C	1,778 SQ. FT.
TOTAL A/C	3,054 SQ. FT.
GARAGE	458 SQ. FT.
COVERED PATIO	104 SQ. FT.
COVERED ENTRY	80 SQ. FT.
TOTAL	3,696 SQ. FT.