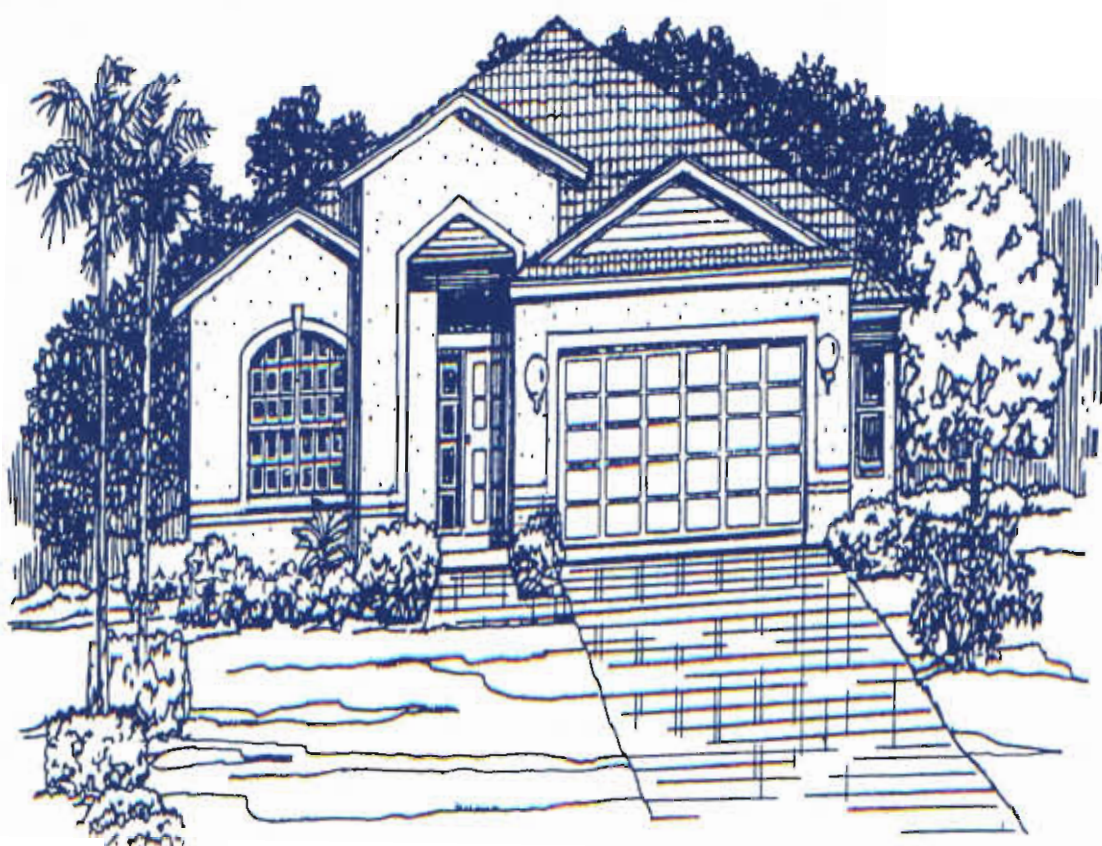


AH



BH



CH

2 Bedroom, 2 Bath & Den

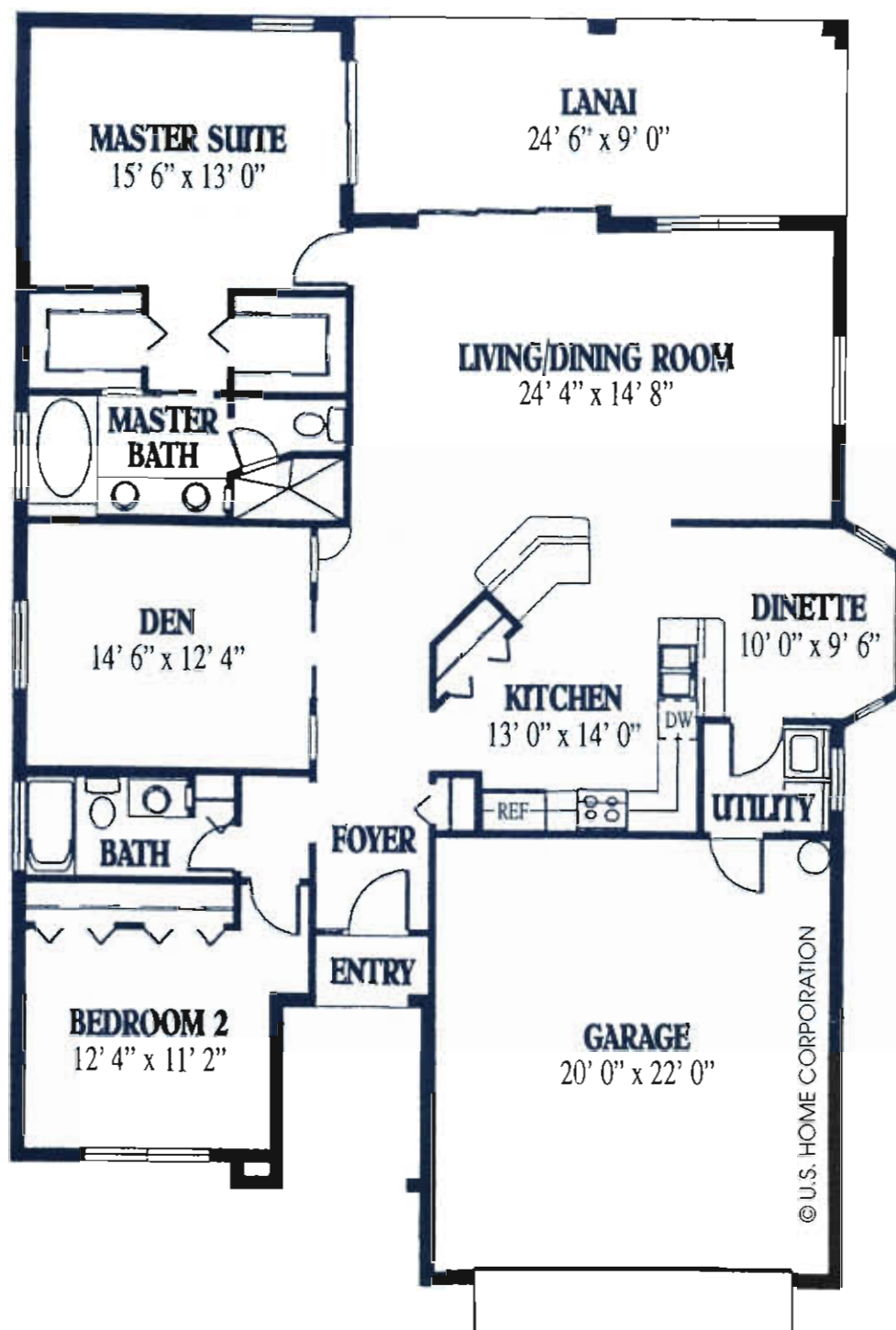
 **Rutenberg Homes**
A DIVISION OF U.S. HOME CORPORATION

© 1993 U.S. HOME CORPORATION



I N V E R N E S S V

AREA TOTALS	
Width	45'
Depth	64'
Living Area	1819
Garage	478
Entry	86
Lanai	245
Total	2628



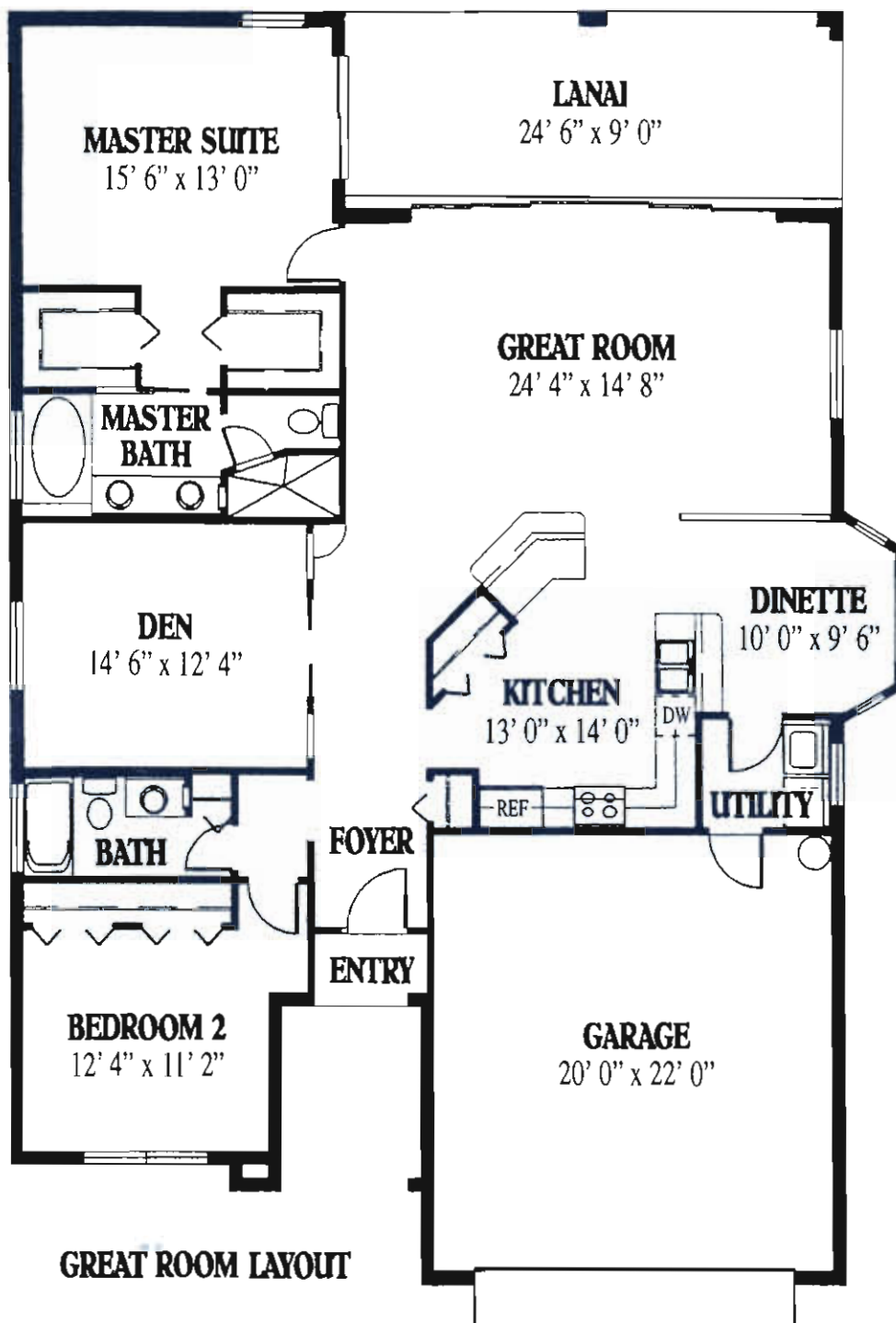
Expansive areas are what set the Inverness floor plan apart from the average 2 bedroom, 2 bath home ... oversized rooms make this layout fabulous! The recessed entry takes you into the wide hallway leading to the combined living and dining room – over 350 square feet. A large kitchen gives the chef of the house lots of elbow space and a double sink on the extended counter overlooks the bay window dinette. Plus, options galore are available to enhance this already great home.



Rutenberg Homes

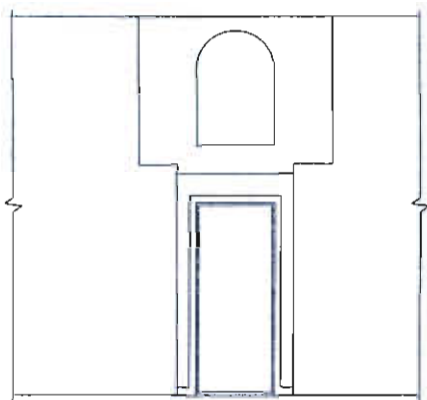
A DIVISION OF U.S. HOME CORPORATION

ALL DIMENSIONS ARE APPROXIMATE AND MAY VARY WITH THE ACTUAL CONSTRUCTION.



This floor plan shows optional Great Room and 8' high by 18' wide sliding glass doors.

POPULAR OPTIONS



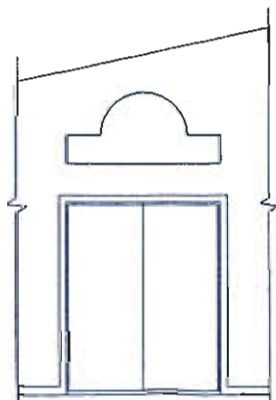
**CUT-OUTS OVER MASTER BATH DOOR
WITH OPTIONAL VAULTED CEILING**



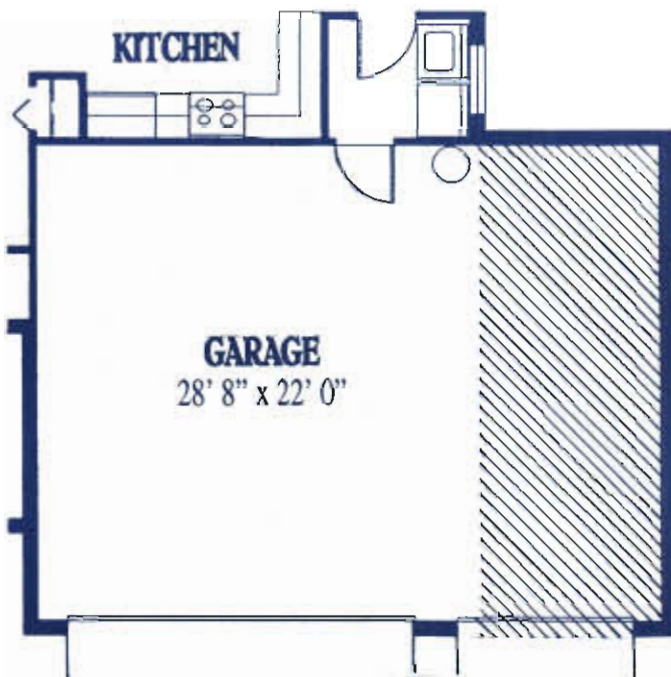
POOL BATH AT SIDE OF HOUSE
Additional Living Area 52' sq. ft.



BAY WINDOW AT MASTER SUITE
Additional Living Area 18' sq. ft.



**CUT-OUTS OVER DEN DOOR
WITH OPTIONAL VAULTED CEILING**



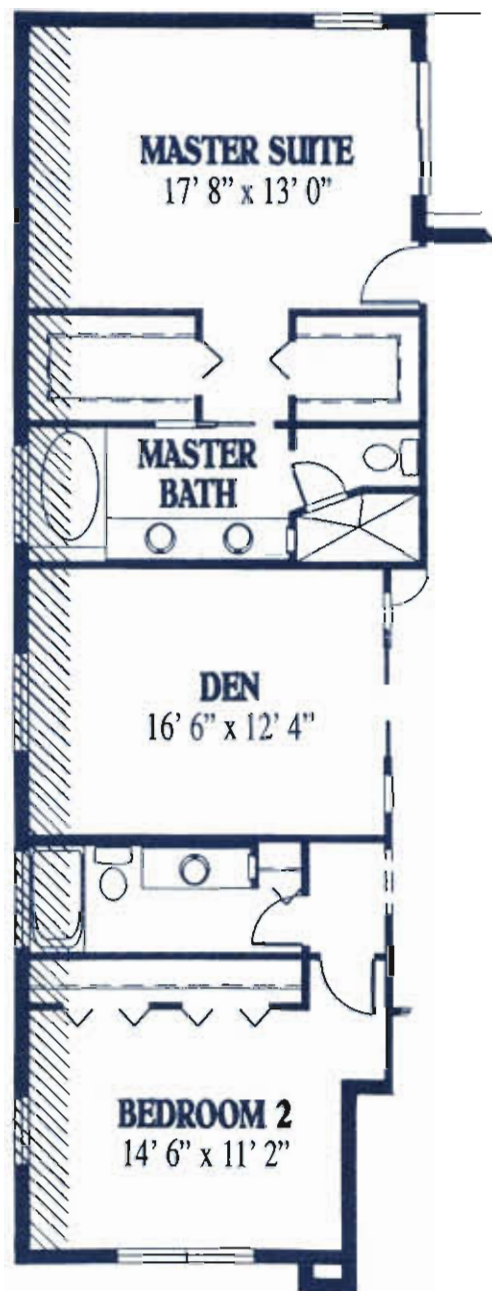
3-CAR GARAGE
Additional Garage Area 202' sq. ft.

**Rutenberg
Homes**
A DIVISION OF U.S. HOME CORPORATION

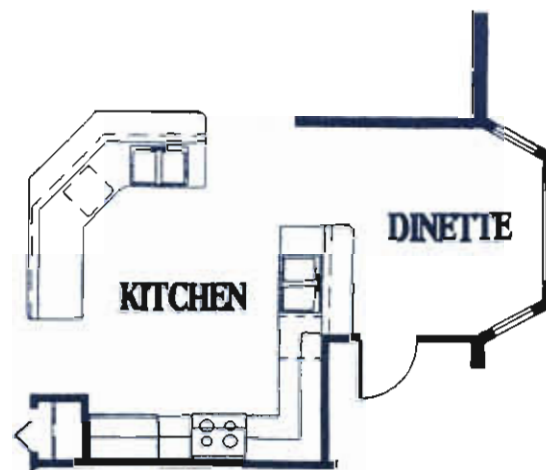


us-home
*Nations Only 3 Time Winner
National Builder of the Year*

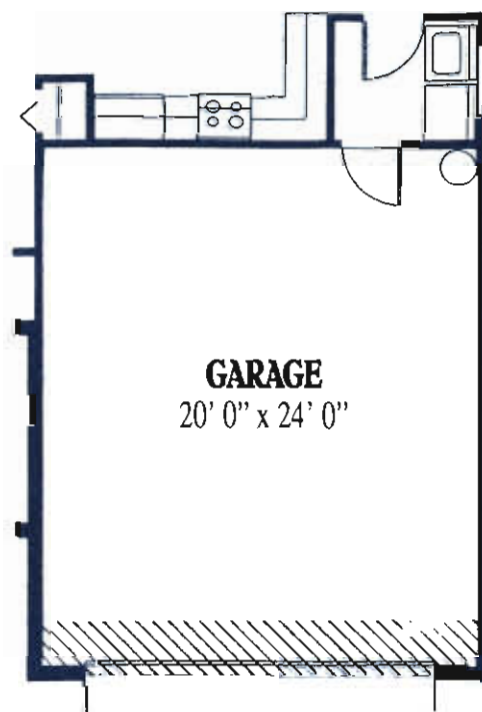
POPULAR OPTIONS



2' EXTENDED SIDE OF HOUSE
Additional LIVING Area 116' sq. ft.



GREAT ROOM KITCHEN LAYOUT



2' EXTENDED GARAGE
Additional Garage Area 43' sq. ft.



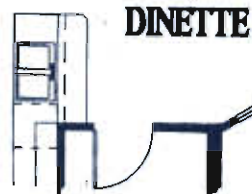
ORAL REPRESENTATIONS CANNOT BE RELIED UPON AS CORRECTLY STATING REPRESENTATIONS OF THE DEVELOPER.
FOR CORRECT REPRESENTATIONS REFERENCE SHOULD BE MADE TO THIS BROCHURE AND TO THE DOCUMENTS.

Revised 9/1/98
Ben J. Golder



**OPTION #1 - SLIDING GLASS DOORS
AT DINING ROOM**

**DINING
ROOM**



**NO WALL BETWEEN
DINING ROOM AND DINETTE**

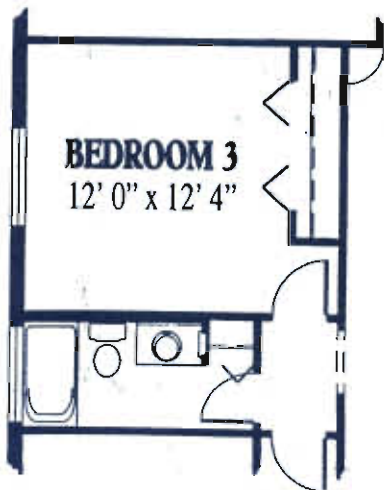
**DINING
ROOM**



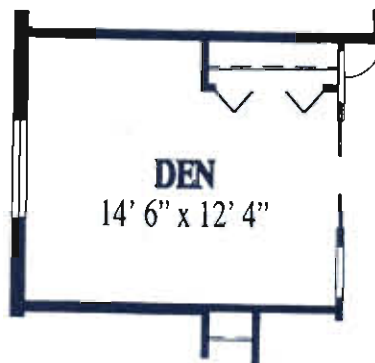
**3' HIGH WALL OR
WALL TO CEILING BETWEEN
DINING ROOM AND DINETTE**



**OPTION #2 - SLIDING GLASS DOORS
AT LIVING/DINING ROOM**



**BEDROOM 3
IN LIEU OF DEN**



CLOSET AT DEN