

VISTA DEL SOL

COACH HOMES



The Seville
First Floor

Living 1,471 Sq. Ft.

Garage 248 Sq. Ft.

Lanai 128 Sq. Ft.

Total 1,847 Sq. Ft.



Spanish Wells

Spanish Wells is wonderfully located, just 1/4 mile East of U.S. 41 on the South side of Bonita Beach Road. For direct access from Interstate 75, use Exit 18, West to Spanish Wells.

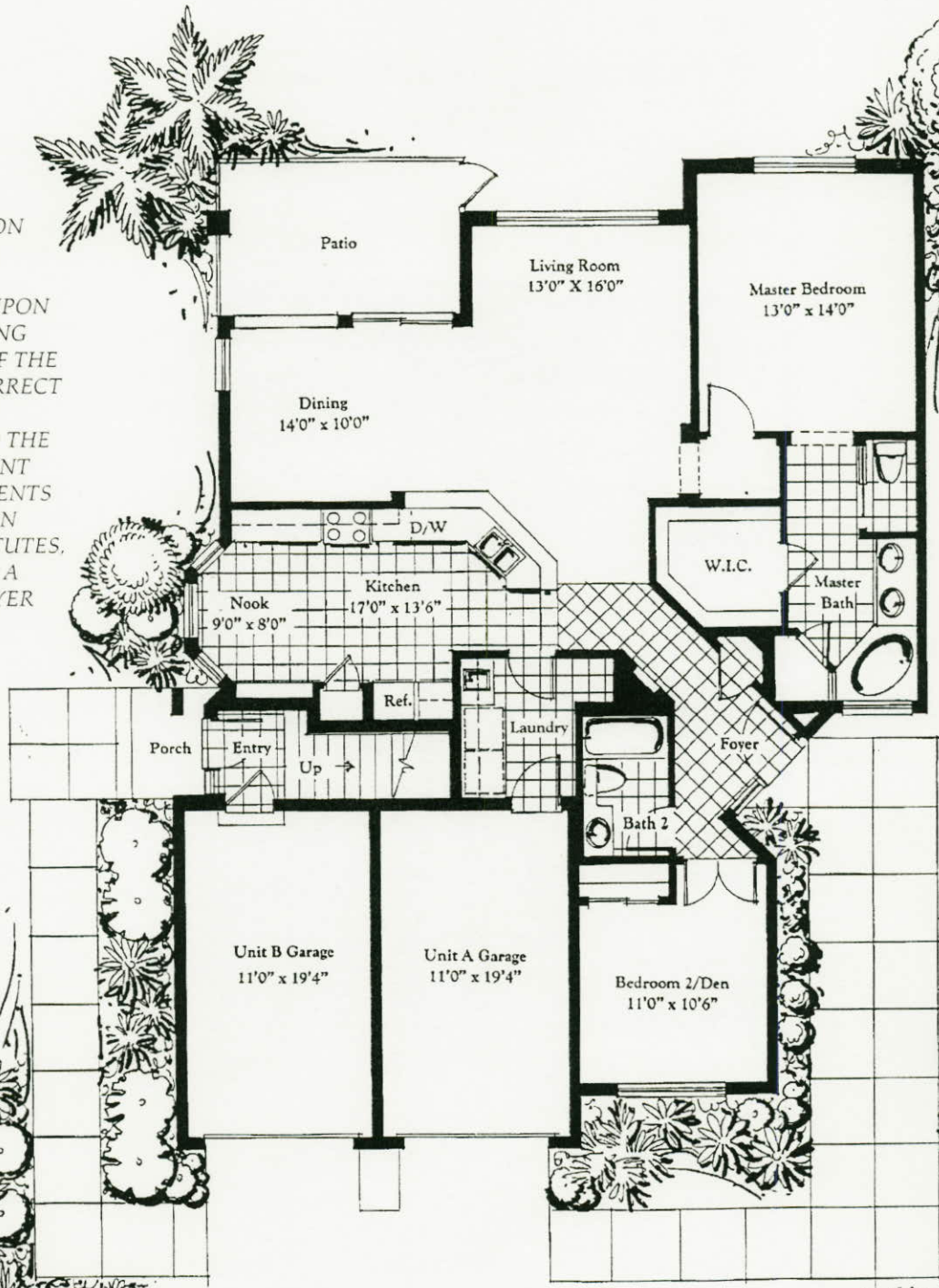
For more information about the various neighborhoods and residential styles of Spanish Wells, call (941) 992-6024 or, from out of town, 800-342-3323.

YOUR COMMUNITY OF TRADITIONAL HOME VALUES

SPANISH WELLS

Floorplan Worksheet

BROKER PARTICIPATION ENCOURAGED. ORAL REPRESENTATIONS CANNOT BE RELIED UPON AS CORRECTLY STATING REPRESENTATIONS OF THE DEVELOPER. FOR CORRECT REPRESENTATIONS, MAKE REFERENCE TO THE PURCHASE AGREEMENT AND TO THE DOCUMENTS REQUIRED BY SECTION 718.503, FLORIDA STATUTES, TO BE FURNISHED BY A DEVELOPER TO A BUYER OR LESSEE.



DCI Communities and McCoy Development are continuously seeking information on the newest innovations in building designs and energy efficiency. Specifications are subject to change from time to time and comparable equipment may be substituted based on availability.

Living 1471 Sq. Ft.
 Garage 248 Sq. Ft.
 Lanai 128 Sq. Ft.
The Seville



All dimensions are approximate and not to scale. Floor plans and elevations are artists concepts. Due to field requirements room dimensions may vary.

