

# PUESTA DEL LAGO

COACH HOMES



## The San Marino

Second Floor

Living 2,305 Sq. Ft.

Garage 388 Sq. Ft.

Lanai 158 Sq. Ft.

Total 2,851 Sq. Ft.



## Spanish Wells

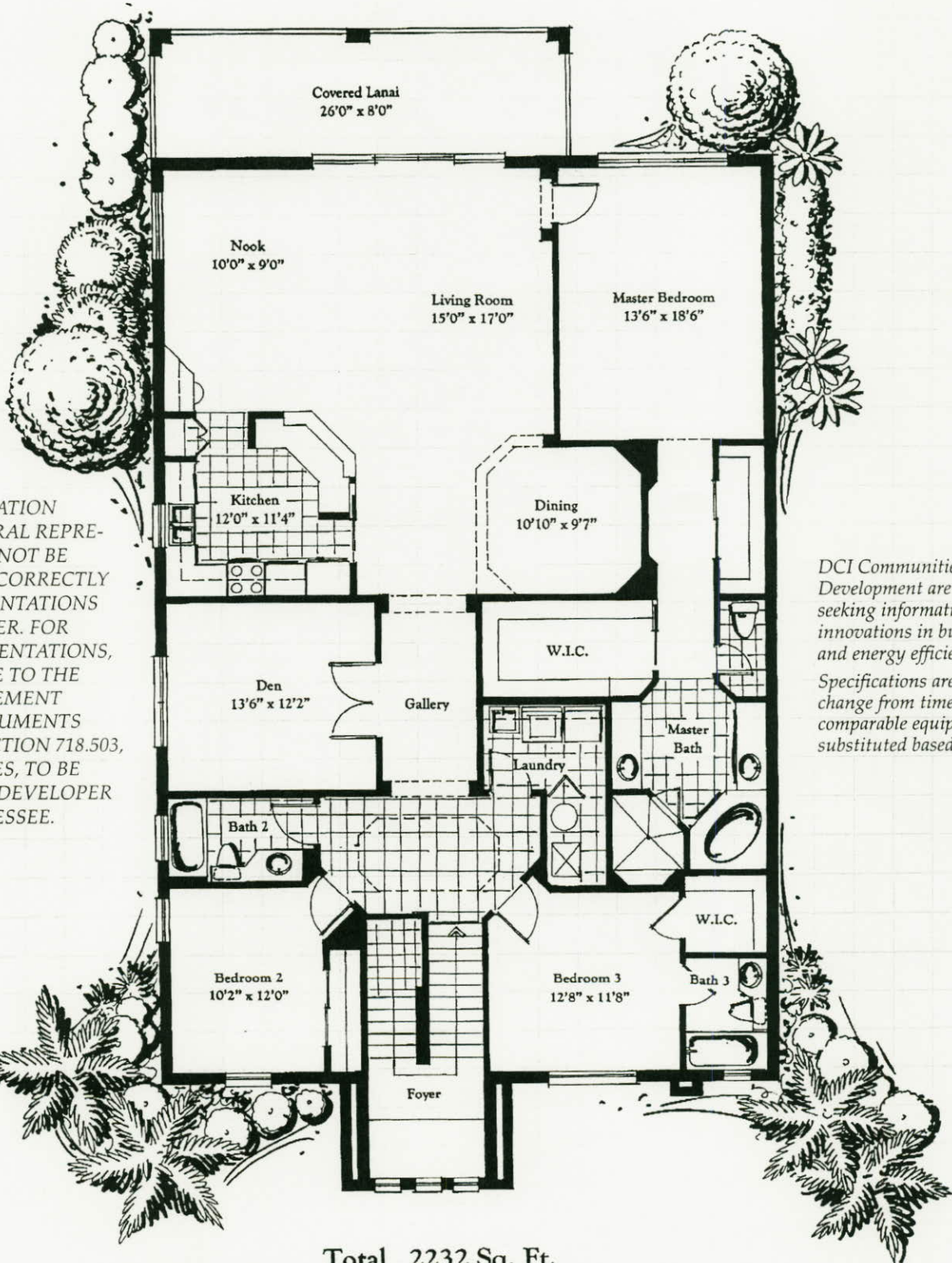
Spanish Wells is wonderfully located, just 1/4 mile East of U.S 41 on the South side of Bonita Beach Road. For direct access from Interstate 75, use Exit 18, West to Spanish Wells.

For more information about the various neighborhoods and residential styles of Spanish Wells, call (941) 992-6024 or, from out of town, 800-342-3323.

YOUR COMMUNITY OF TRADITIONAL HOME VALUES

# SPANISH WELLS

## Floorplan Worksheet



BROKER PARTICIPATION ENCOURAGED. ORAL REPRESENTATIONS CANNOT BE RELIED UPON AS CORRECTLY STATING REPRESENTATIONS OF THE DEVELOPER. FOR CORRECT REPRESENTATIONS, MAKE REFERENCE TO THE PURCHASE AGREEMENT AND TO THE DOCUMENTS REQUIRED BY SECTION 718.503, FLORIDA STATUTES, TO BE FURNISHED BY A DEVELOPER TO A BUYER OR LESSEE.

DCI Communities and McCoy Development are continuously seeking information on the newest innovations in building designs and energy efficiency. Specifications are subject to change from time to time and comparable equipment may be substituted based on availability.

Total 2232 Sq. Ft.

The San Marino