

SAN SEBASTIAN

V I L L A H O M E S



Living 1,841 Sq. Ft.

Garage 571 Sq. Ft.

Entry 36 Sq. Ft.

Lanai 240 Sq. Ft.

Total 2,688 Sq. Ft.



Spanish Wells

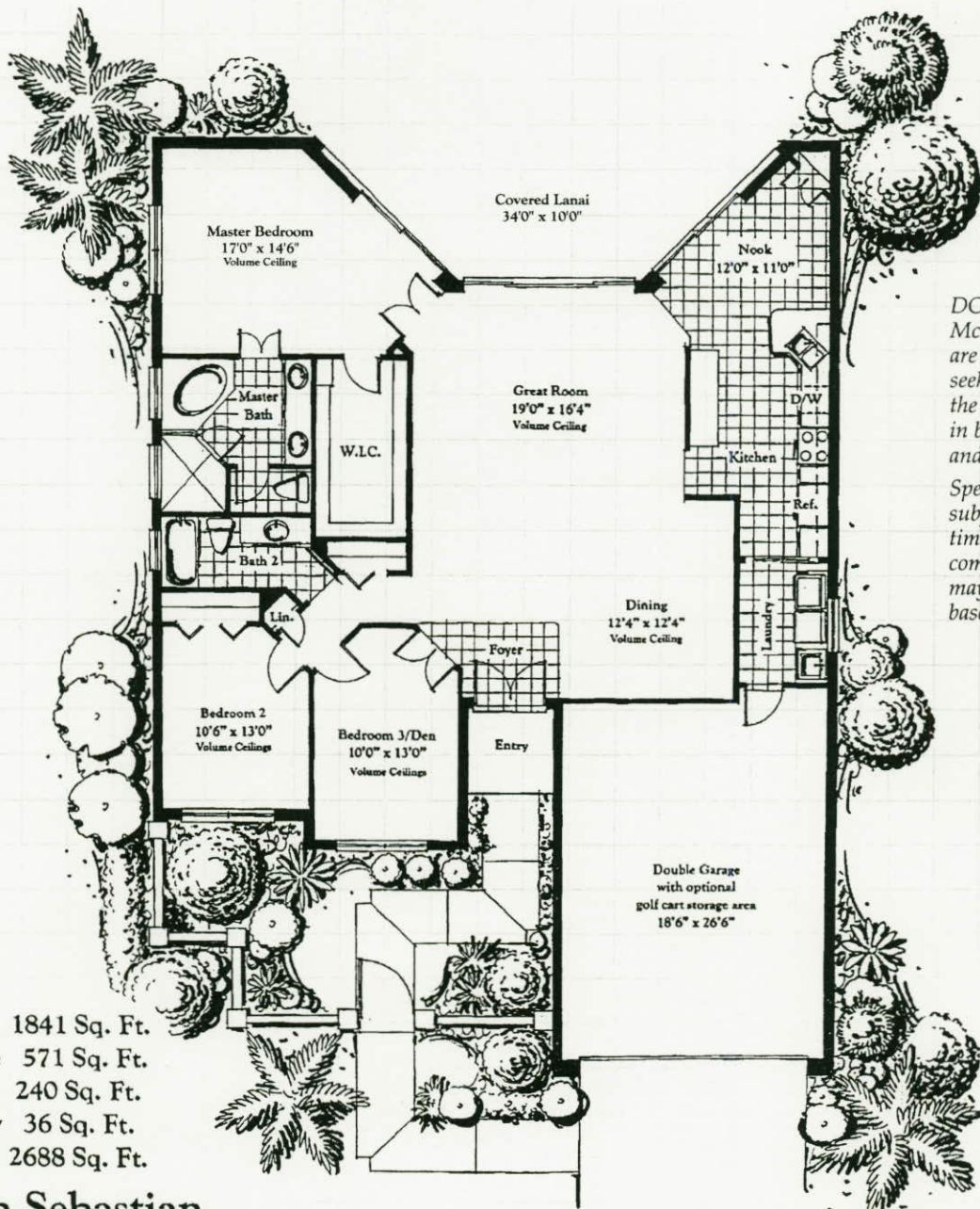
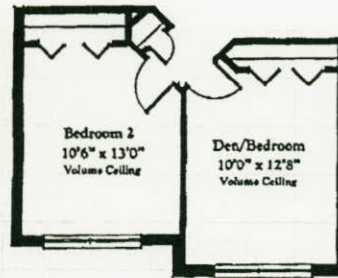
Spanish Wells is wonderfully located, just 1/4 mile East of U.S. 41 on the South side of Bonita Beach Road. For direct access from Interstate 75, use exit 18, West to Spanish Wells.

For more information about the various neighborhoods and residential styles of Spanish Wells, call (941) 992-6024 or, from out of town, 800-342-3323.

YOUR COMMUNITY OF TRADITIONAL HOME VALUES

SPANISH WELLS

Floorplan Worksheet



DCI Communities and McCoy Development are continuously seeking information on the newest innovations in building designs and energy efficiency. Specifications are subject to change from time to time and comparable equipment may be substituted based on availability.

Living 1841 Sq. Ft.
Garage 571 Sq. Ft.
Lanai 240 Sq. Ft.
Entry 36 Sq. Ft.
Total 2688 Sq. Ft.

The San Sebastian

All dimensions are approximate and not to scale. Floor plans and elevations are artists concepts. Due to field requirements room dimensions may vary.