

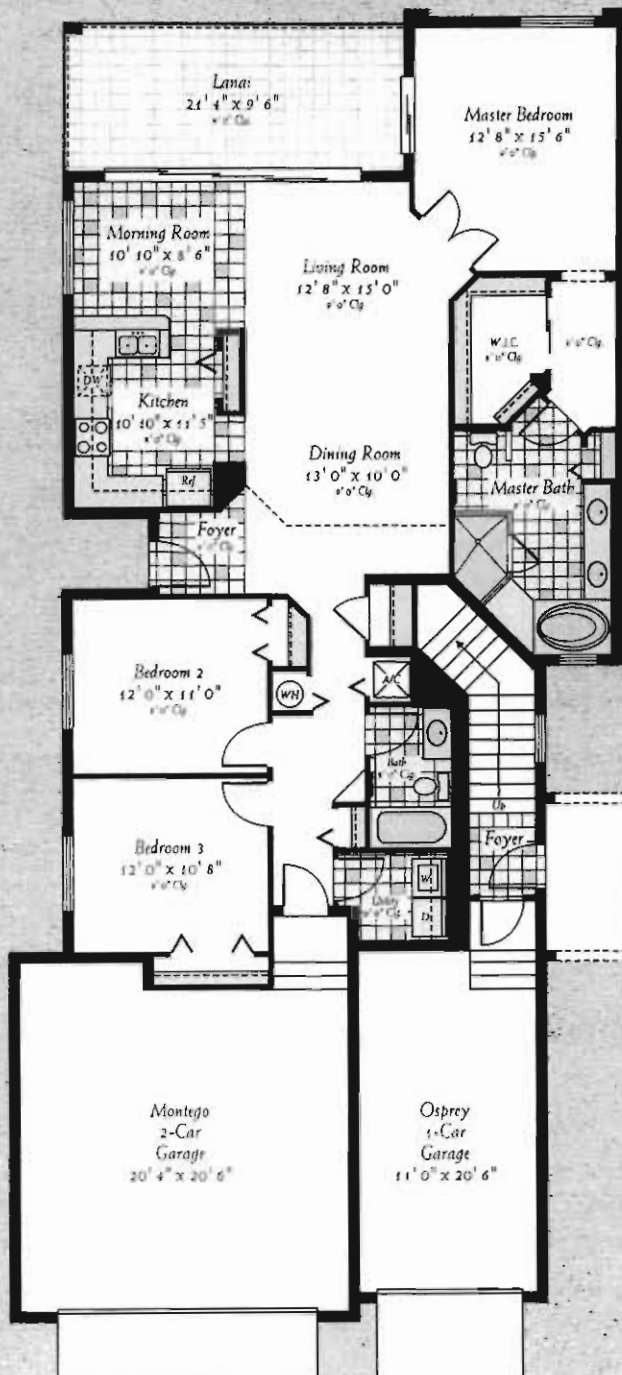


MONTEGO

3

Living	1,632 Sq. Ft.
Lanai	200 Sq. Ft.
Garage	417 Sq. Ft.
Total	2,249 Sq. Ft.

3 BEDROOMS, 2 BATHS,
MORNING ROOM,
AND 2-CAR GARAGE



CUSTOM FEATURES Traditional Couch Homes

KITCHEN

- Laminate counter tops
- White double bowl sink with white Moen faucet with side spray

BATHROOMS

- White cabinets with flat laminate doors (Group 1)
- Chrome shower enclosures with clear glass (per plan)
- Chrome Moen fixture package "Chateau" with 4" centers
- Separate acrylic bathtub in master bathroom

FLOOR COVERINGS

- Ceramic tile (Group 1) in entry, kitchen/nook, all bathrooms, and laundry room
- Quality carpeting (Group 2) and 3-lb rebond padding throughout

continued on next page