

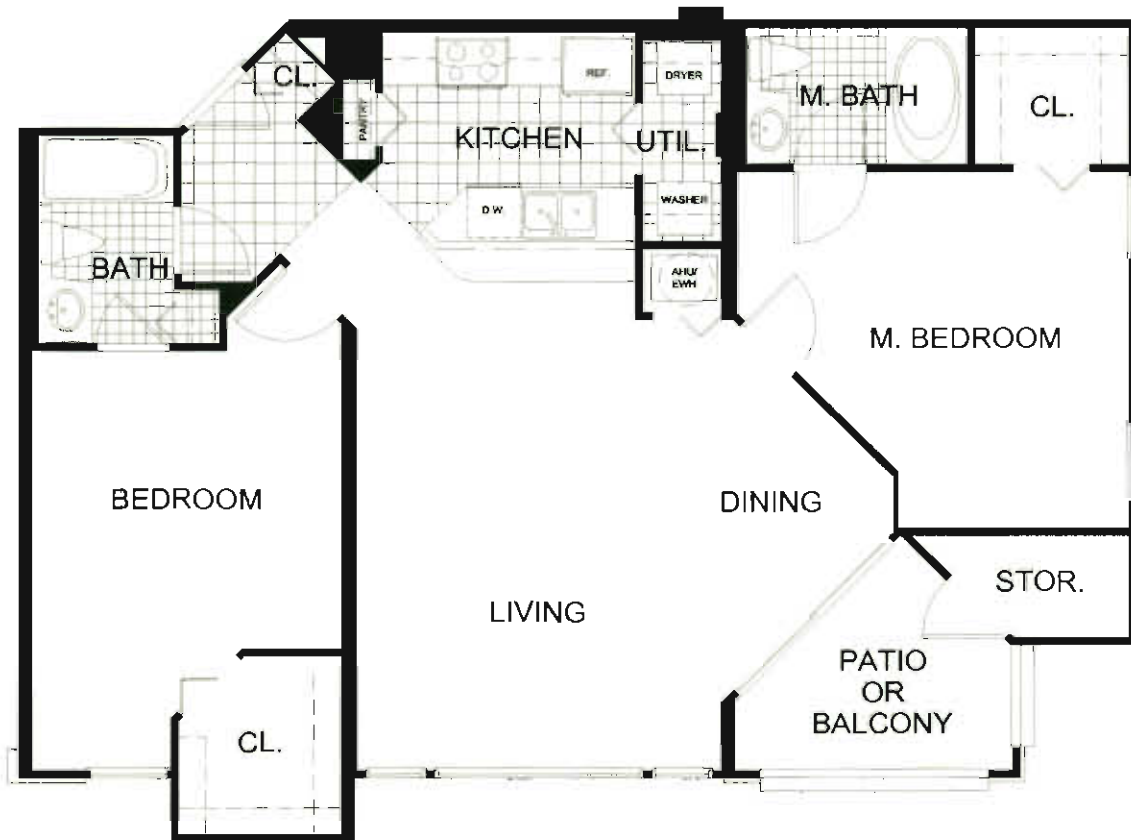


SAN MIRAGE

AT BONITA SPRINGS

Floor Plan "Trieste"

2 BEDROOM / 2 BATH



APPROXIMATE SIZE
A/C: 1,031 Sq Ft
Patio: 70 Sq Ft
Storage: 18 Sq Ft
Total: 1,126 Sq Ft



Oral representations cannot be relied upon as correctly stating representations of the developer. For correct representations, make reference to documents required by Section 719.503, Florida Statutes, to be furnished by a developer to a buyer or lessee. *Features and prices are subject to change without advance notice 11-2004. Dimension and square footage are approximate and may vary with actual unit.

SAN MIRAGE at Bonita Springs

8890 COLONNADES COURT WEST, BONITA SPRINGS, FL 34135 • PHONE 239. 992. 9928 • FAX: 239. 498. 8901 • WWW.SANMIRAGE.COM