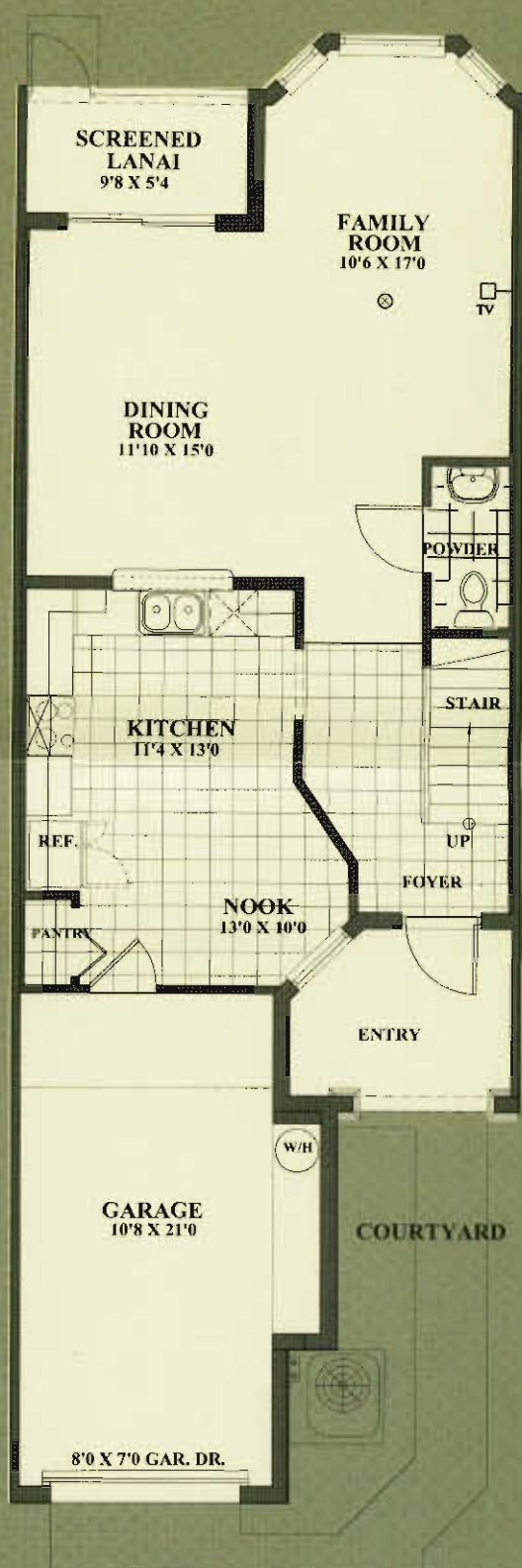
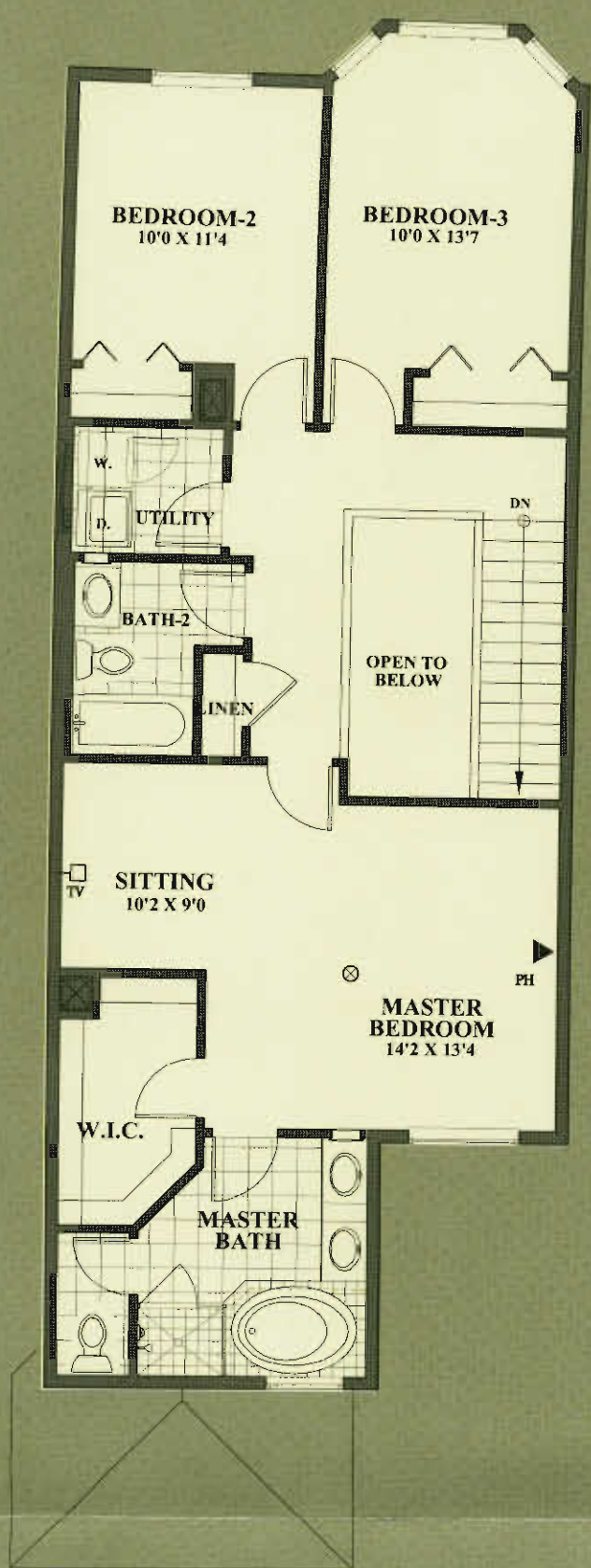


The Ibis II



The Ibis II

Two Story, 3 Bedrooms,
2 1/2 Baths, Family Room,
Dining Room, Covered Lanai,
1 Car Garage

1st Floor Area	770
2nd Floor Area	985
TOTAL LIVING AREA	1,755

Covered Lanai	51
Covered Entry	70
Garage	272
TOTAL AREA	2,148

OBTAIN THE PROPERTY REPORT REQUIRED BY FEDERAL LAW AND READ IT BEFORE SIGNING ANYTHING. NO FEDERAL AGENCY HAS JUDGED THE MERITS OR VALUE, IF ANY, OF THIS PROPERTY. WE ARE PLEDGED TO THE LETTER AND SPIRIT OF THE U.S. POLICY FOR ACHIEVEMENT OF EQUAL HOUSING OPPORTUNITY THROUGHOUT THE NATION. WE ENCOURAGE AND SUPPORT AN AFFIRMATIVE ADVERTISING AND MARKETING PROGRAM IN WHICH THERE ARE NO BARRIERS TO OBTAINING HOUSING BECAUSE OF RACE, COLOR, RELIGION, SEX, HANDICAP, FAMILIAL STATUS OR NATIONAL ORIGIN.

All dimensions are approximate and subject to change with the agreement for sale. The sketches, renderings, graphic material, plans, specifications, terms, conditions, and statements contained in this brochure are proposed only, and the Developer reserves the right to modify, revise, or withdraw any or all of same in its sole discretion and without prior notice. All improvements, designs, and construction are the subject to first obtaining the appropriate federal, state, and local permits and approvals for same. These drawings are conceptual only and are for the convenience of reference. They should not be relied upon as representations, expressed or implied, of the final detail of the residences. The developer expressly reserves the right to make modifications, revisions, and changes it deems desirable in its sole and absolute discretion. Dimensions and square footage are approximate and may vary with actual construction. 08/2003