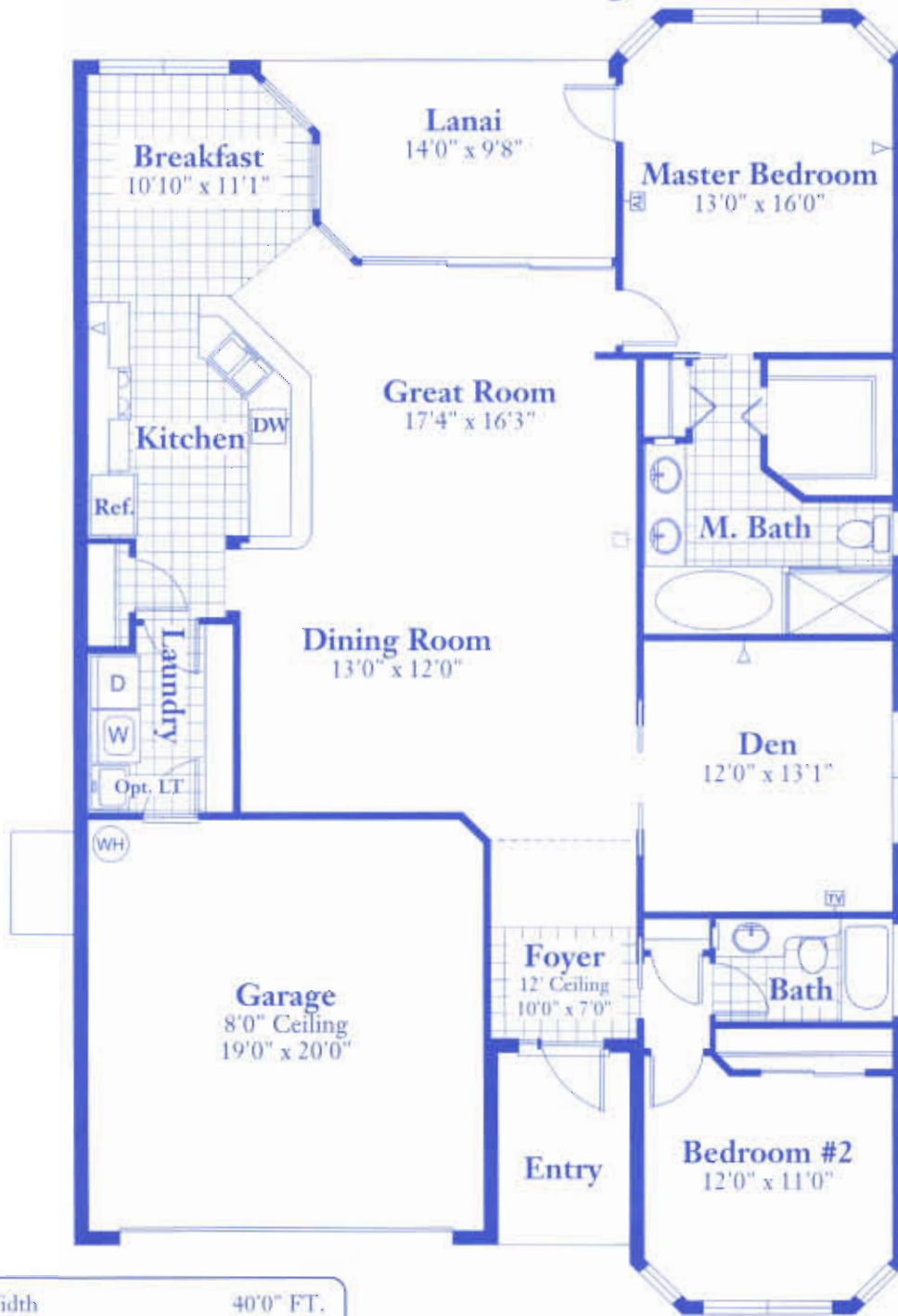


Normandy V



Width	40'0" FT.
Depth	63'6" FT.
Living Area	1,758 SQ. FT.
Garage	412 SQ. FT.
Lanai	141 SQ. FT.
Entry	38 SQ. FT.
Total Area	2,349 SQ. FT.

Ceiling Height- 9'4"



DIAMOND BUILDER AWARD
For Excellence in Consumer Satisfaction



Enjoy the Luxury of Choice.

Oral representations cannot be relied upon as correctly stating representations of the developer. For correct representation reference should be made to this brochure and to the documents furnished by the developer. All plans are artist rendering and all dimensions are approximate, and may vary with actual construction. Floor plans, window sizes and room sizes may vary based on the elevation selected. Landscaping on the rendering is shown only for display. Colonial Homes reserves the right to modify all plans and specifications without notice or obligation. Some options may affect the footprint of the home. These footprint changes may affect pool placement & the size as well as the home fitting of the specified lot. See Colonial Homes personnel for details.



Lic. # CB-C047688

11/01/03