



Tellaro I

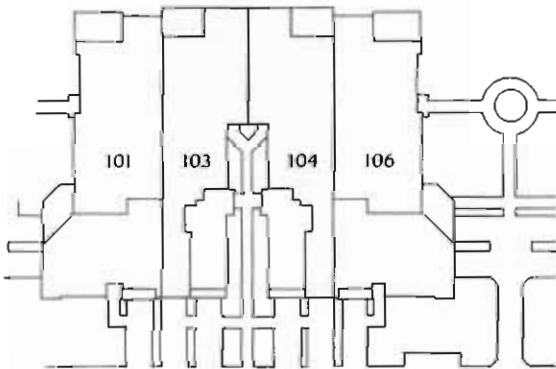
Ground Floor*
Three Bedroom, Two Bath,
Coach Home

Air Conditioned	1,606 sq. ft.
Loggia	20 sq. ft.
Lanai	166 sq. ft.
Attached Garage	286 sq. ft.
Total	2,078 sq. ft.

* Tellaro II is available on second floor.

Building Layout

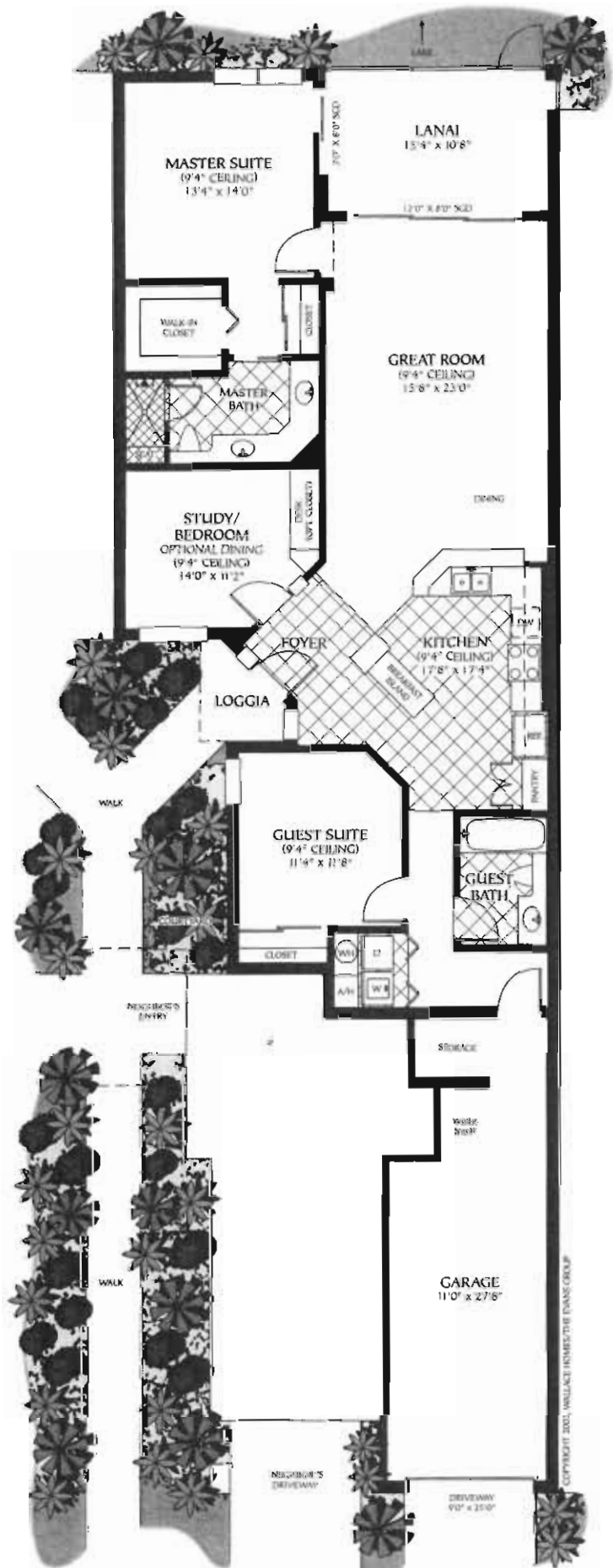
Shown here is unit #104.
Unit #103 is reverse image.



Tellaro, Italy
(elevation 10 meters, population 1,134)

An unspoiled, perfectly preserved Ligurian coastal village, with its seaside church, winding walkways and beautiful beaches. Just a short stroll away is its sister village Fiascherina. Both are justifiably loved by European vacationers who flock here every summer.

Scale
1" = 11'



ORAL REPRESENTATIONS CANNOT BE RELIED UPON AS CORRECTLY STATING REPRESENTATIONS OF THE DEVELOPER. FOR CORRECT REPRESENTATIONS, MAKE REFERENCE TO THIS BROCHURE AND TO THE DOCUMENTS REQUIRED BY SECTION 718.503, FLORIDA STATUTES, TO BE FURNISHED BY A DEVELOPER TO A BUYER OR LESSEE.

All dimensions are approximate. Developer reserves the right to change and/or alter all materials, specifications, features, dimensions and designs without notice. Prices and availability subject to change without notice.

COPYRIGHT 2001, WALLACE INTERIORS DESIGN GROUP