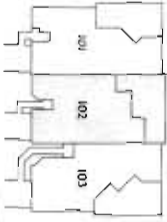


Sestri Levante

Ground Floor

Three Bedroom + Loft, Three Bath,
Two-Story Courtyard Villa

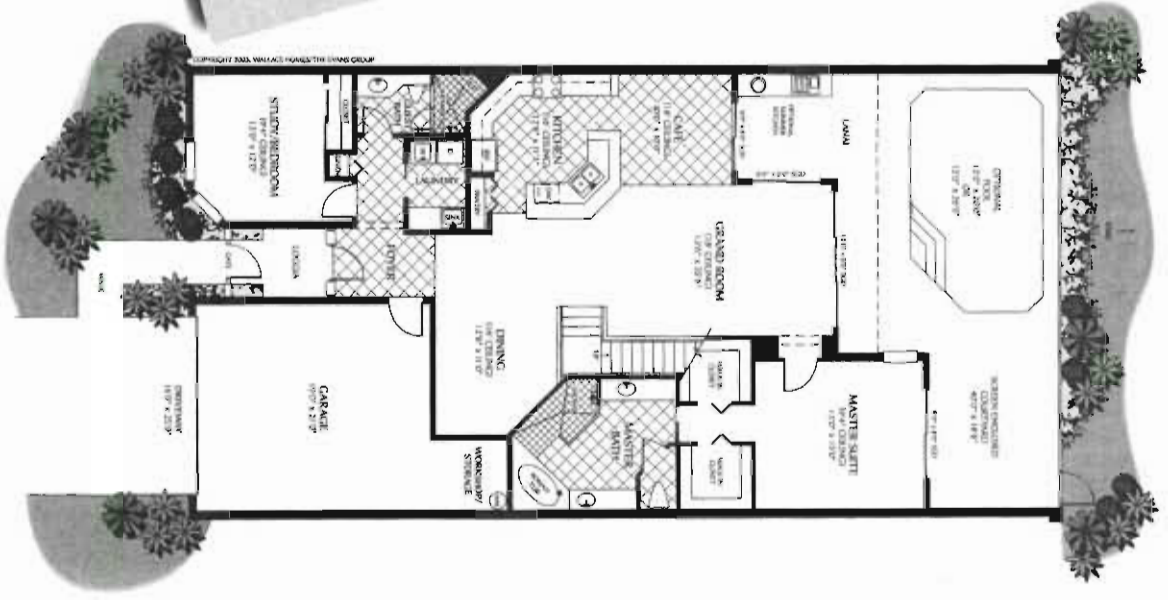
Air Conditioned	2,376 sq. ft.
Loggia	410 sq. ft.
Balcony	98 sq. ft.
Courtyard/Janai	756 sq. ft.
Two-Car Garage	442 sq. ft.
Total	3,712 sq. ft.



Building layout
Shown here is unit # 101

Sestri Levante. Half a century ago, the town of Sestri Levante was a small fishing village. It was the town of Sestri Levante that was the inspiration for the town of Sestri Levante. The town of Sestri Levante was the inspiration for the town of Sestri Levante. The town of Sestri Levante was the inspiration for the town of Sestri Levante.

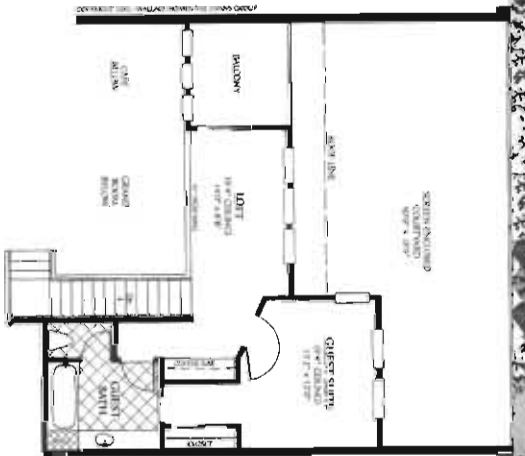
Scale
1" = 11'



Sestri Levante

Second Floor

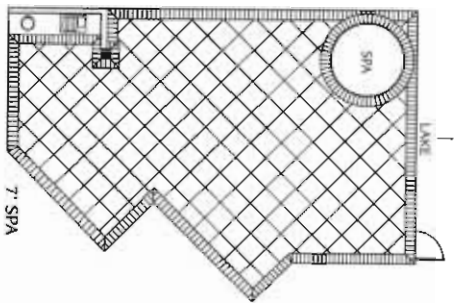
Three Bedroom + Loft, Three Bath,
Two-Story Courtyard Villa



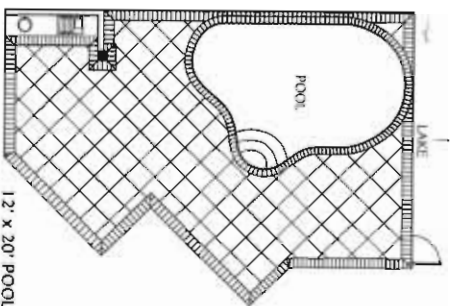
Scale
1" = 11'

Courtyard Options

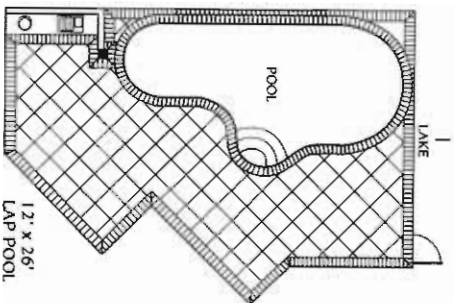
Shown here is the Sama Margherita. All kidney pools and spas are also available on Porto Venere model.



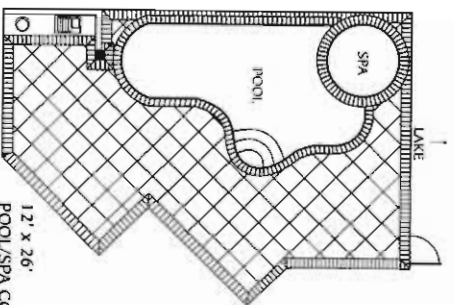
7' SPA



12' x 20' POOL



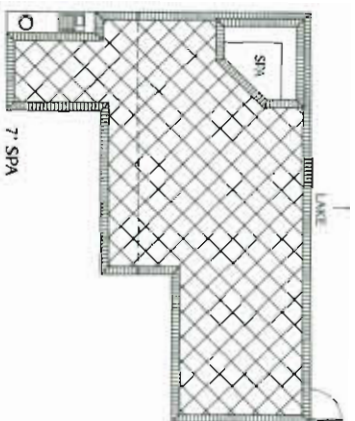
12' x 26'
LAP POOL



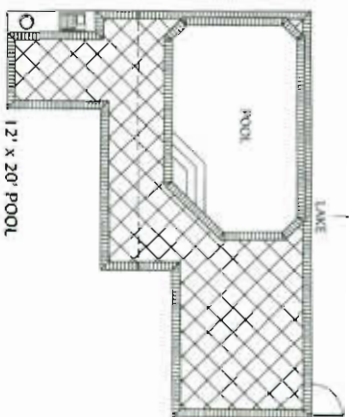
12' x 26'
POOL/SPA COMBO

Courtyard Options

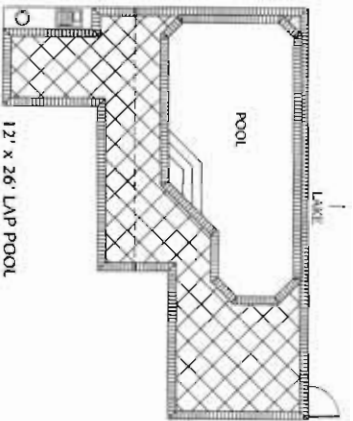
Shown here is the Sestri Levante. All pools and spas are also available in all other models



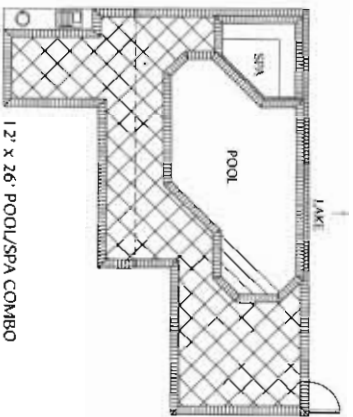
7' SPA



12' x 20' POOL



12' x 26' LAP POOL



12' x 26' POOL/SPA COMBO