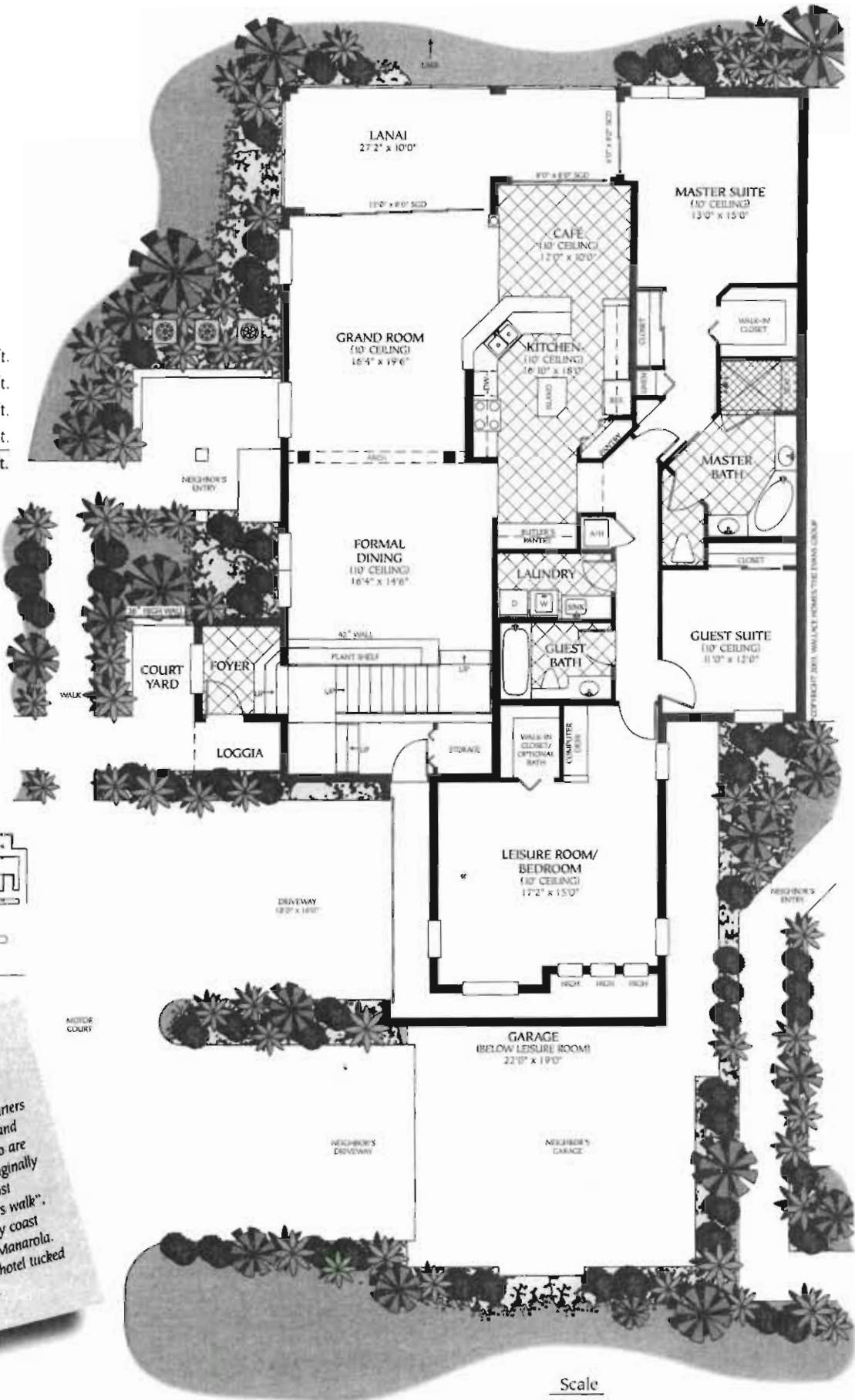




Rio Maggiore

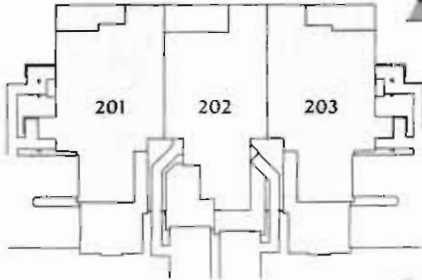
Second Floor
Three Bedroom, Two Bath,
Carriage Home

Air Conditioned	2,584 sq. ft.
Loggia	36 sq. ft.
Lanai	242 sq. ft.
Two-Car Garage	418 sq. ft.
Total	3,280 sq. ft.



Building Layout

Shown here is unit #201
Unit #203 is reverse image.



Rio Maggiore, Italy
(elevation 35 meters, population 1,881)

The highest of the Cinque Terre, it is headquarters of the protected Cinque Terre National Park and its Punta di Montenero and Punta del Mesco are well-known scuba-diving destinations. Originally named after the Rivus Major, it is now most famous as the starting point for its "lovers walk", the Via dell Amore, carved into the rocky coast winding its way to the nearby town of Manarola. Look for the charming "Duc Gemelli" hotel tucked in the vineyards high up over the sea.

Scale
1" = 12'