



# Portofino III

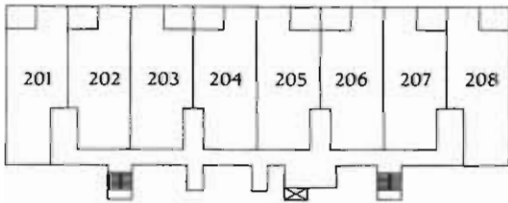
Third Floor\*  
 Three Bedroom, Two Bath,  
 Terrace Home

Air Conditioned	1,342 sq. ft.
Entry	64 sq. ft.
Lanai	120 sq. ft.
Parking/Storage	262 sq. ft.
<b>Total</b>	<b>1,788 sq. ft.</b>

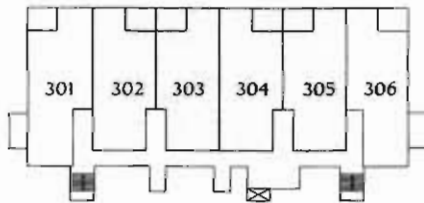
\* Portofino II is available on second floor.

### Building Layout

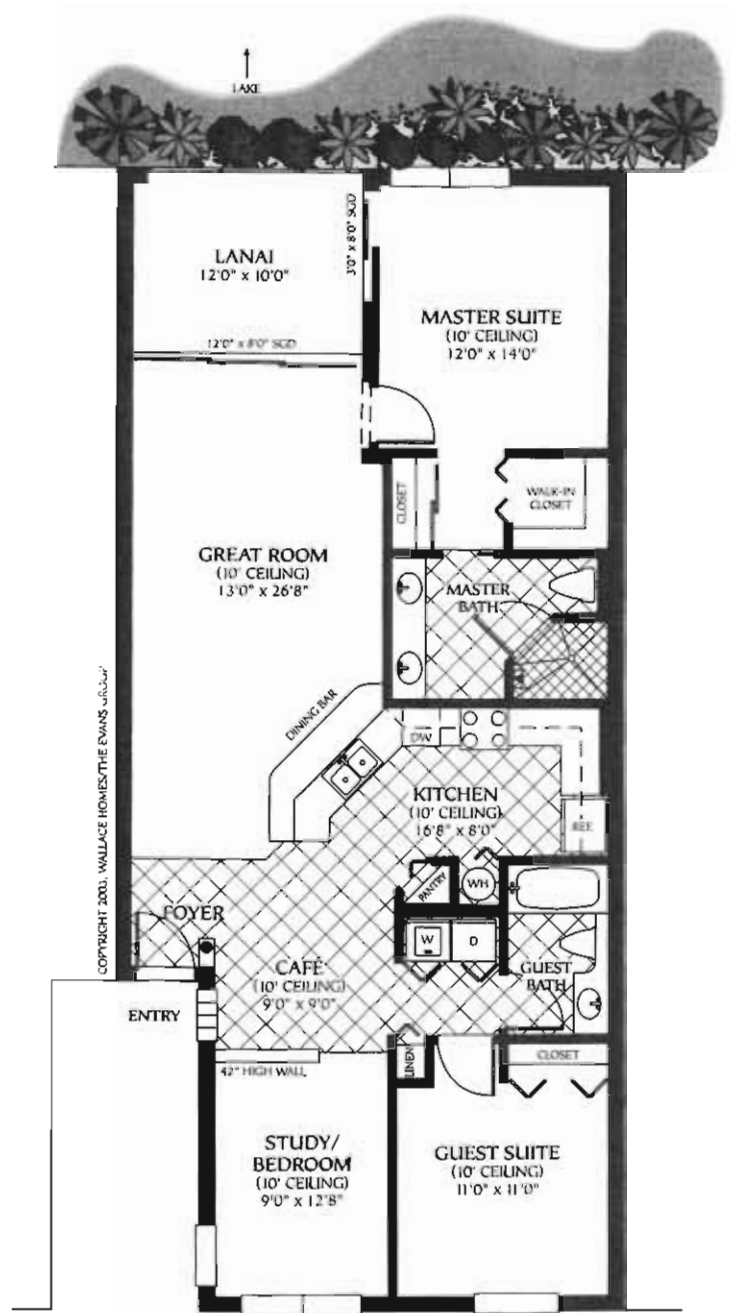
Parking/Storage Garage on ground floor.  
 Shown here are units #303 and #305.  
 Units #302 and #304 are reverse images.



SECOND FLOOR



THIRD FLOOR



COPYRIGHT 2003, WALLACE HOMES/THE EVANS GROUP

BALCONY/WALKWAY



Scale  
 1" = 10'