

# Rapallo™

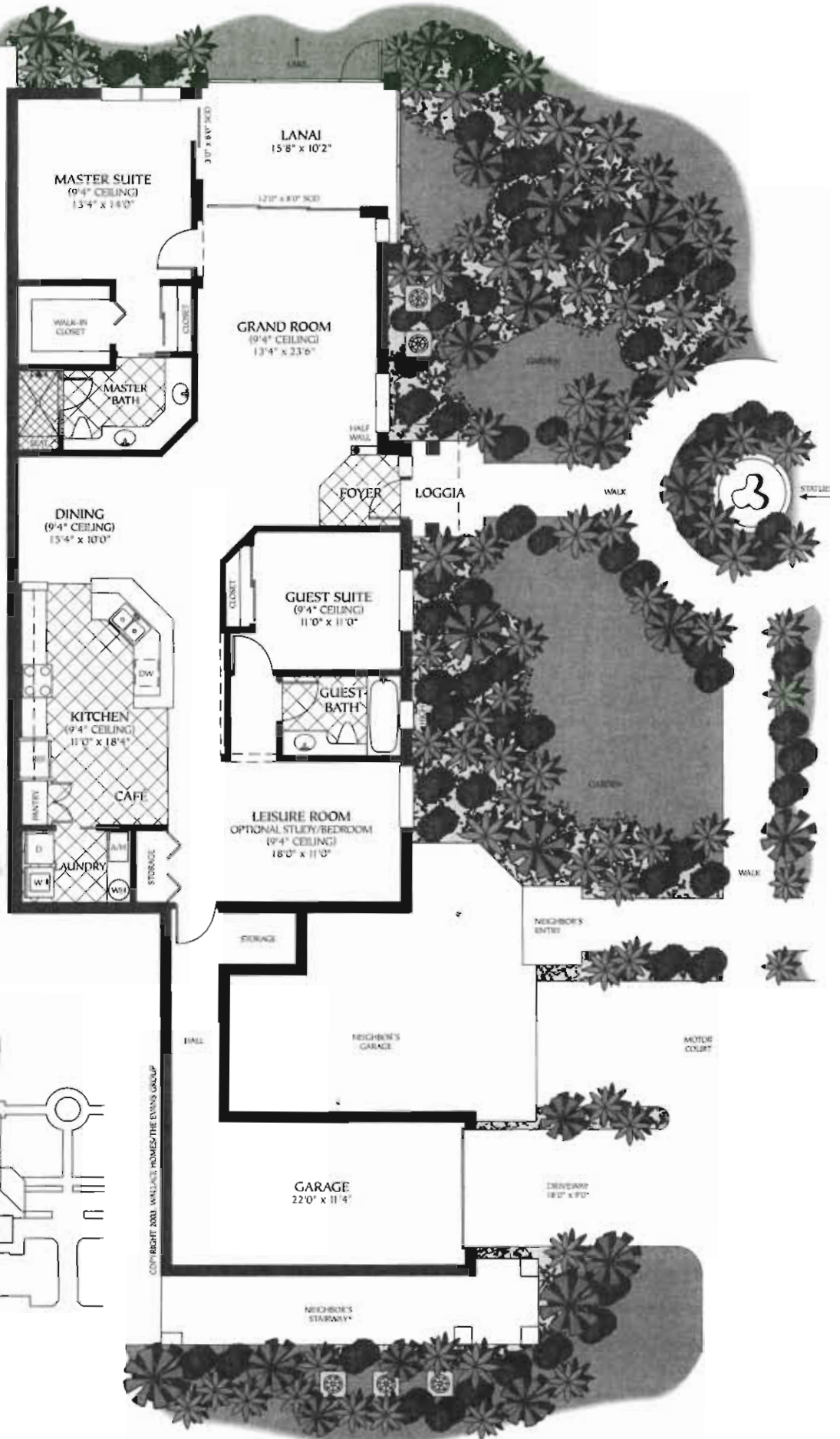
At Coconut Point

## Lorenzo I

Ground Floor\*  
Two Bedroom + Leisure Room,  
Two Bath,  
Coach Home

Air Conditioned	1,706 sq. ft.
Loggia	16 sq. ft.
Lanai	170 sq. ft.
Attached Garage	326 sq. ft.
<b>Total</b>	<b>2,218 sq. ft.</b>

\* Lorenzo II is available on second floor.

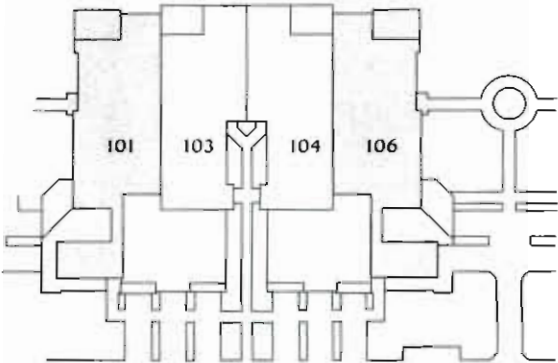


*San Lorenzo al Mare, Italy*  
(elevation 4 meters, population 504)

Tucked along the rocky coast and sandy Mediterranean Sea between San Remo and the Porto Maurizio half of the provincial capital of Imperia is this special little seaside resort with its vibrant hotels, restaurants and beaches often filled with sun-loving European vacationers.

### Building Layout

Shown here is unit #106.  
Unit #101 is reverse image.



Scale  
1" = 11"