

Rapallo™

At Coconut Point

Andora I

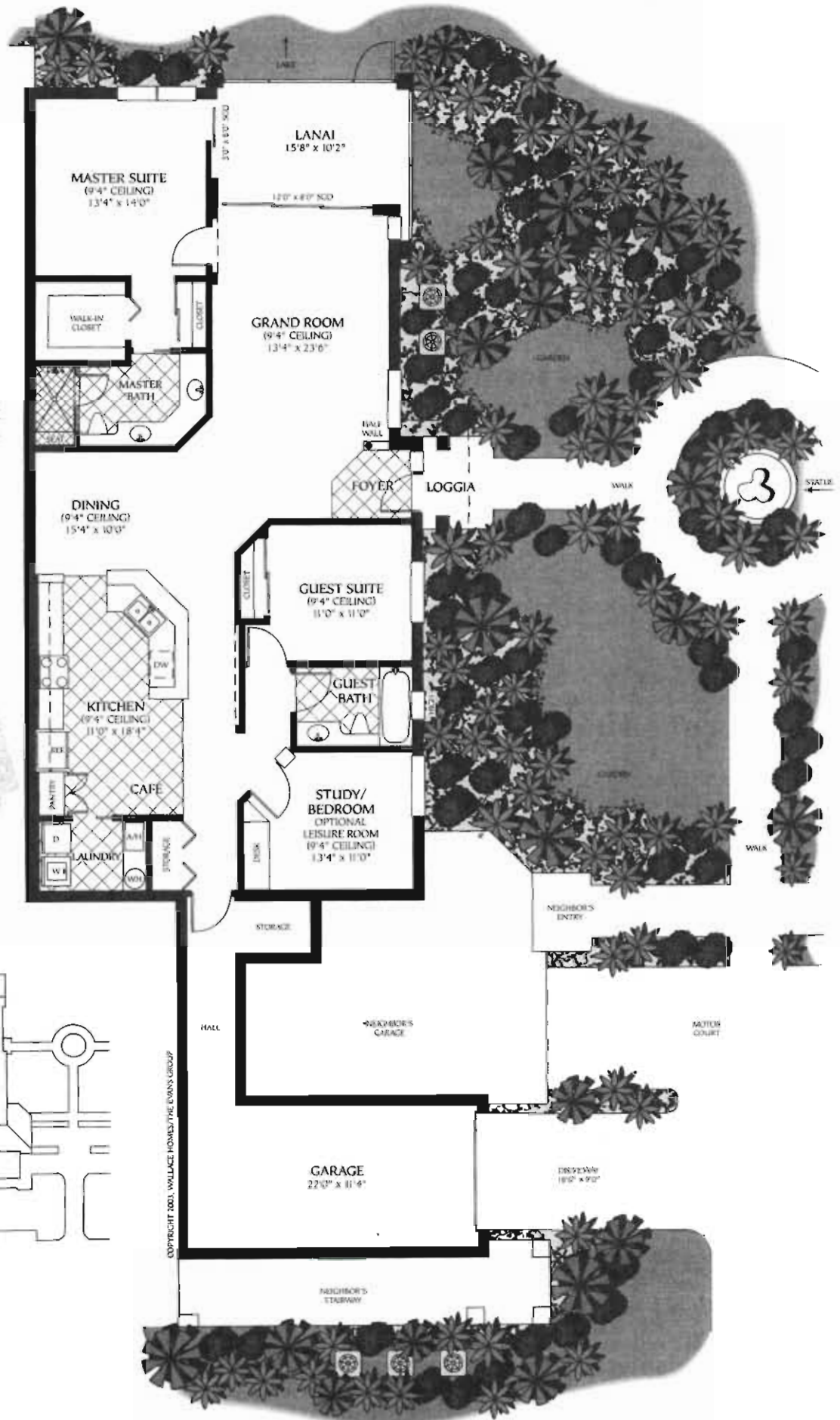
Ground Floor*
Three Bedroom, Two Bath,
Coach Home

Air Conditioned	1,706 sq. ft.
Loggia	16 sq. ft.
Lanai	170 sq. ft.
Attached Garage	326 sq. ft.
Total	2,218 sq. ft.

* Andora II is available on second floor.

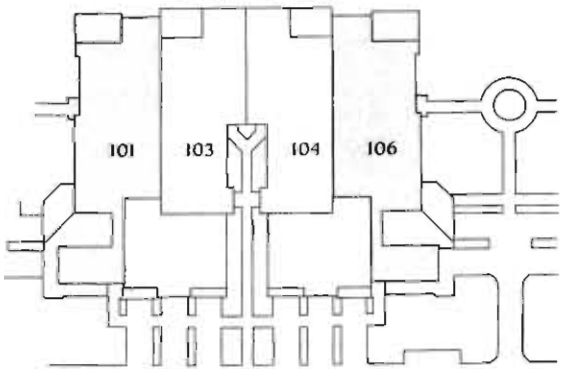
Andora, Italy
(elevation 4 meters, population 6,636)

This medieval town centers around its 700 berth harbor, blending the old Mediterranean and Andora Castello with the sun worshippers and "Moresco" hotel on the seafront promenade. A stroll along the Merula River leads to the ten-span Roman bridge with its classic three hump-back spans. And be sure to try the Ligurian cuisine at "Casa Del Priore". The Pesto or calamari are always delicious.



Building Layout

Shown here is unit #106.
Unit #101 is reverse image.



Scale
1" = 11'

COPYRIGHT 2001, WALLACE HOWES, THE EVANS GROUP