

London Bay Homes

The Wentworth



A stately Colonial home, the Wentworth is the epitome of graceful living, from the delicate fountains and lush landscaping to the covered front porch with majestic two-story accent columns. Inside, a grand foyer resplendent with limestone and slate ushers the way to a world of luxury. The family gathering room overlooks the lanai and features a custom designed built-in TV area with fireplace and solid oak bookshelves. The gourmet kitchen with center island is equipped with top-of-the-line Sub-Zero and Gaggenau appliances, while the nearby butler's pantry provides an icemaker and wine rack for entertaining. Linger over brunch on the built-in window seat of the breakfast nook and soak up the sun

through large, fixed-glass windows. For formal dinners, there's the dining room with custom designed buffet and French doors leading to the porch. The Master Retreat offers a morning kitchen and seating area and a bathing pavilion with walk-in shower, whirlpool tub, premium faucets and separate room for toilet and bidet.

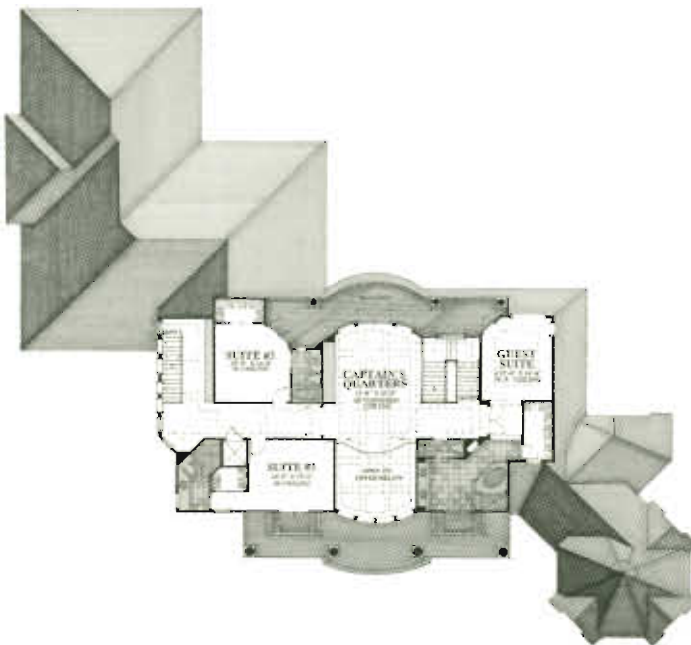
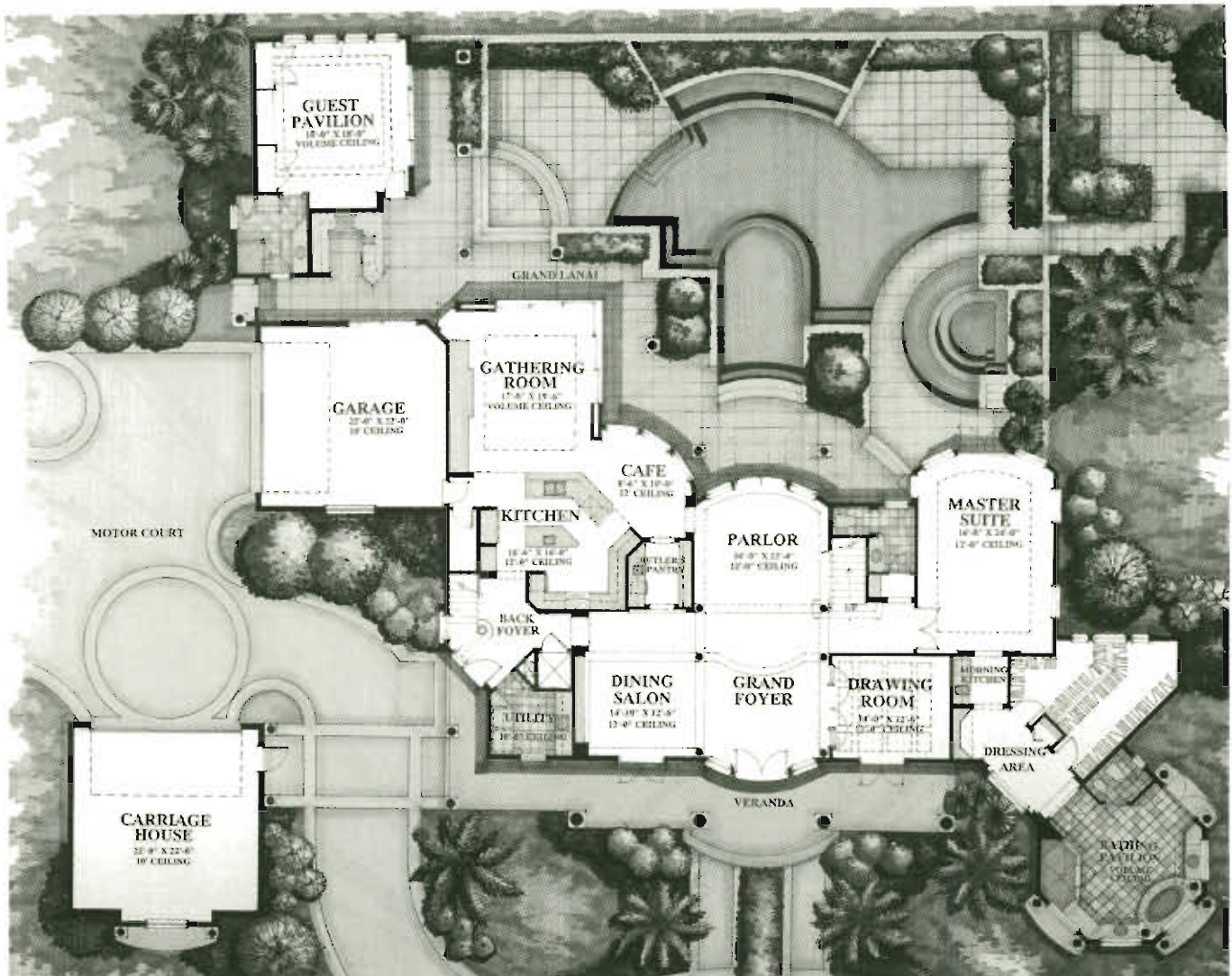
The second floor, easily accessible by the elevator or two staircases, contains three guest suites, each with a large bathroom and walk-in closet. Entertainment options abound in the Captain's Quarters, which houses a state-of-the-art RCA Home Theater with satellite and media center. For quiet moments, the vast porch with french windows has an inviting

view of the golf course.

A detached two-car carriage house and an additional attached two-car garage provide generous parking for residents and guests. The two-tiered architecturally designed swimming pool with spa provides the crowning touch.

London Bay Homes, in conjunction with D.F.B. Development, Inc., has set a new standard for sumptuous living in The Wentworth.





The Wentworth	
Living Area	5,601 sq. ft.
Lanai	1,005 sq. ft.
Other Non-Air Conditioned Area	1,906 sq. ft.
Total	8,512 sq. ft.

All dimensions and specifications are approximate, and subject to change without notice.