

Snell Custom Homes

The Royal Victoria



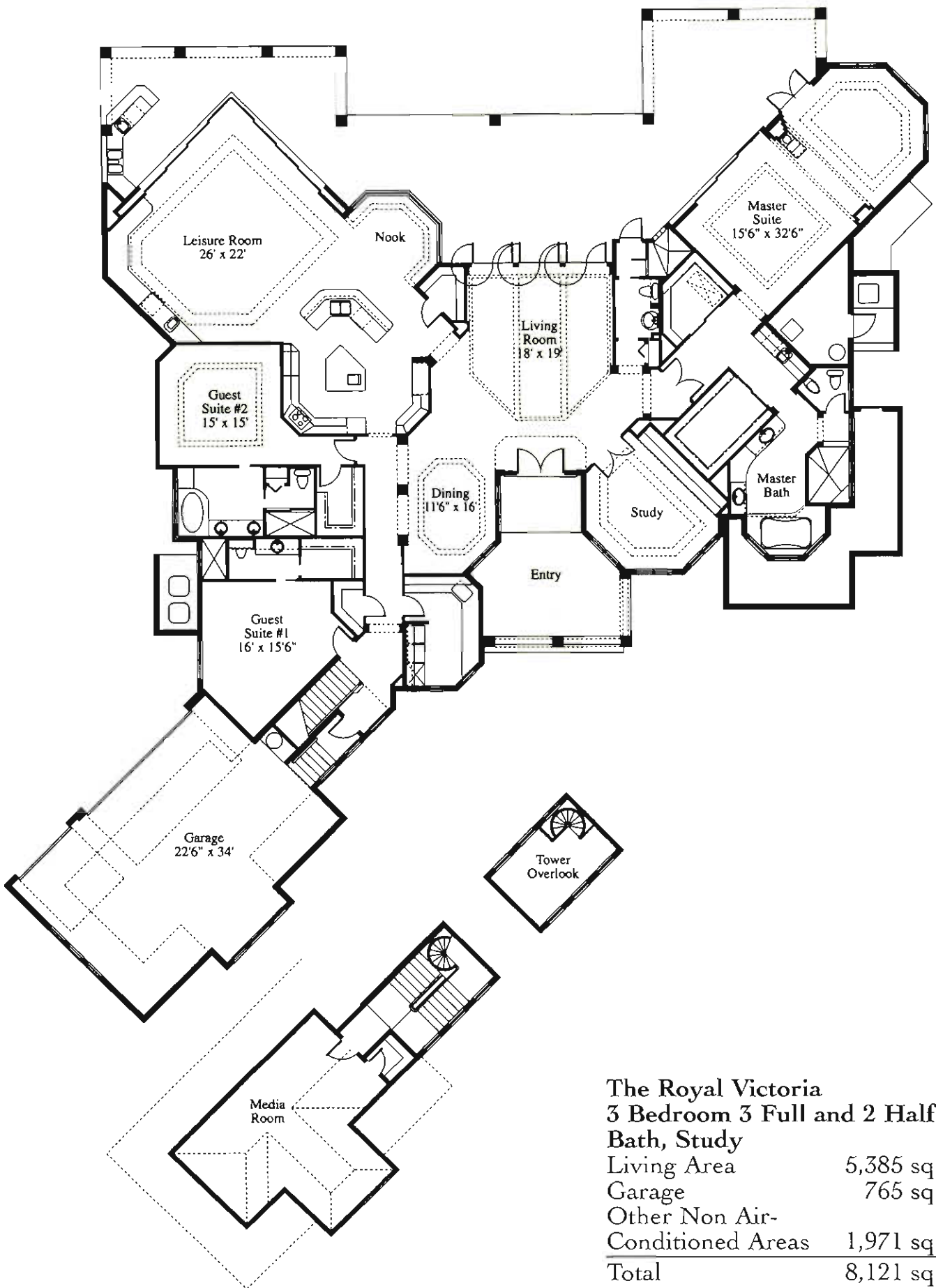
Artist's Conception

Grandeur is fundamental to the design of The Royal Victoria, a traditional estate home graced with elegant architectural accents. The Royal Victoria has 5,385 square feet of air-conditioned living space and a total of 8,121 square feet. It offers three bedrooms plus a study, leisure room and media room, and four baths. The gourmet kitchen features an island workspace, breakfast nook and butler's pantry. The master suite provides

a luxurious retreat with a bay windowed sitting room that opens onto the pool terrace. The master bath overlooks a private tropical garden. There is a wetbar with refrigerator and sink. A tribute to state-of-the-art technology, the media room is virtually a second-level theater with the finest digital sound, video and television equipment viewed on a 5-foot by 6-foot screen. Crowned with lavish interior details, such as trayed and cof-

fered ceilings, formal columns, marble floors, and sculptured carpets, The Royal Victoria is truly a palatial home.





The Royal Victoria
3 Bedroom 3 Full and 2 Half
Bath, Study

Living Area	5,385 sq. ft.
Garage	765 sq. ft.
Other Non Air-Conditioned Areas	1,971 sq. ft.
Total	8,121 sq. ft.

All dimensions and specifications are approximate, and subject to change without notice. #CRC052282