

Imperial Property Development

The Palm Beach

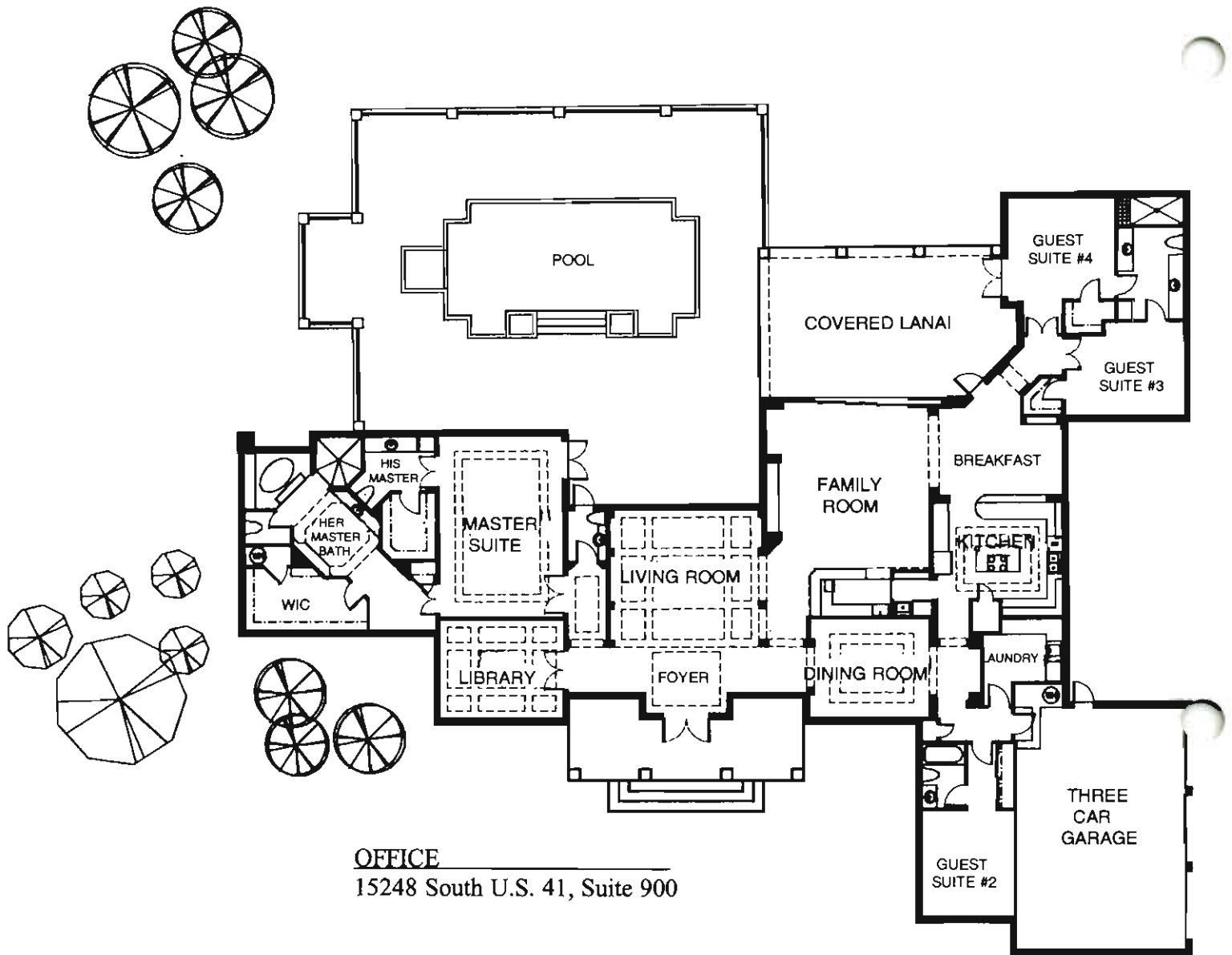


Palm Beach, California, known for its tropical weather and luxurious lifestyle, was the inspiration for this four bedroom, four bath home encompassing 4,648 square feet under air. The luxurious homecoming begins on a circular brick-paver driveway leading to a three car, side entry garage with separate electric door openers. The front entry welcomes visitors with cast stone pavers, columns, trim, balustrades and overhead medallion. Custom designed, eight foot mahogany entry doors lead to the elegant interior, which includes a formal living room with squared pillars, trim moulding and 16 foot fixed glass windows. To the left of the entry is the library, with double doors, coffered ceiling, and wood

shutters. To the right, a formal dining room with coffered ceilings, adjacent to the kitchen. A breakfast nook with decorative niches is positioned off the kitchen, which features DownsView cabinetry, granite countertops, breakfast bar and desk, and top-of-the-line KitchenAid and Bosch appliances. A pass through butler's pantry with dishwasher connects to a sunken marble and granite wet bar with Sub-Zero undercounter refrigerator and wine captain. The leisure room features pocket sliders with transoms and entertainment center niches. Spacious His and Her master suite baths are connected by a common shower and feature cherry cabinetry and marble details. Guest bedrooms have pri-

vate baths and closets. The laundry room is appointed with wood cabinets, ceramic countertops, G.E. washer and dryer and ironing board center. The pool and spa and a covered, screened lanai with bar, sink and grill is enclosed by fencing. The Palm Beach is available, fully furnished, for \$1,575,000.





The Palm Beach

Living Area	4,648 sq. ft.
Garage	758 sq. ft.
Covered Entry	254 sq. ft.
Covered Patio	629 sq. ft.
Total	6,289 sq. ft.

All dimensions and specifications are approximate, and subject to change without notice.