

QuailMark Homes

The Birkdale



The Birkdale is the latest luxury home handcrafted by QuailMark Homes. Designed by QuailMark architect Barry Tretheway, AIA, the three bedroom plus study residence which includes three full and two half baths, is situated on a gracious homesite of almost one acre, overlooking a beautiful golf fairway at Quail West.

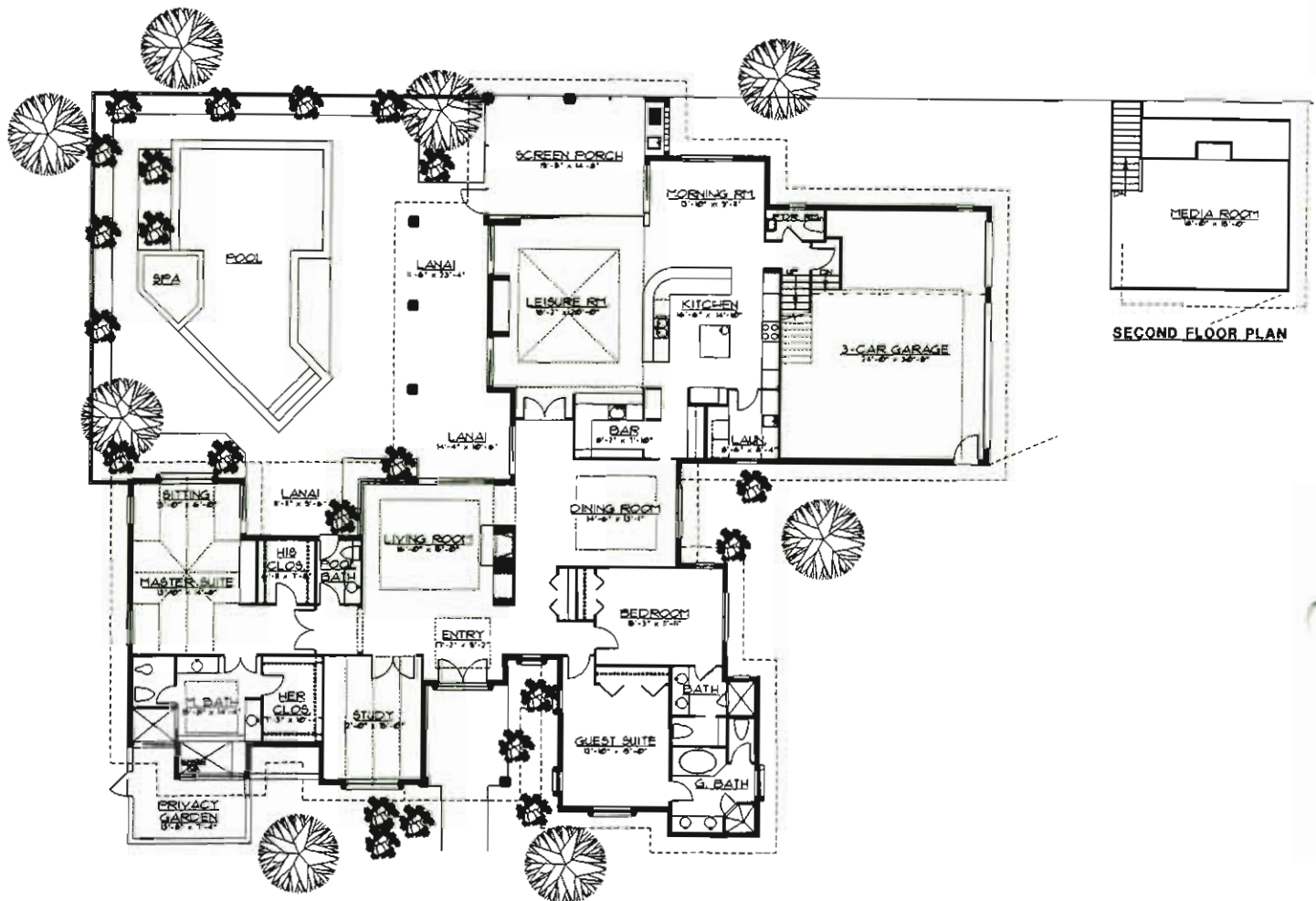
The owner's suite features gabled ceilings, a built-in breakfast/TV center, and a large sitting area which opens onto a private lanai. The master bath is highlighted by a sunken tub overlooking the pri-

vate courtyard, his and her walk-in closets and dual marble vanities. Two guest suites are also located on the first floor of the home for ease of access. Accenting The Birkdale's classic, casual feel are a spacious living room, study, dining room and serving bar with refrigerator and wine captain. The gourmet kitchen is adjacent to the morning room and leisure room, and a "bonus" room upstairs can be utilized as a hobby room or fourth bedroom. The screen-enclosed porch with outdoor cook center and Jenn Aire

downdraft grill overlooks the pool, patio and surrounding landscape.

The Birkdale is available at \$1,595,000 including furnishings provided by Robb & Stucky.





The Birkdale
3 Bedroom, 3 Full and
2 Half Bath, Study

Air Conditioned

Living Area	4,190 sq. ft.
Garage	778 sq. ft.
Screen Porch	316 sq. ft.
Lanai	542 sq. ft.
Pool Area	1,880 sq. ft.
Entry	124 sq. ft.
Total	7,830 sq. ft.

All dimensions and specifications are approximate, and subject to change without notice.