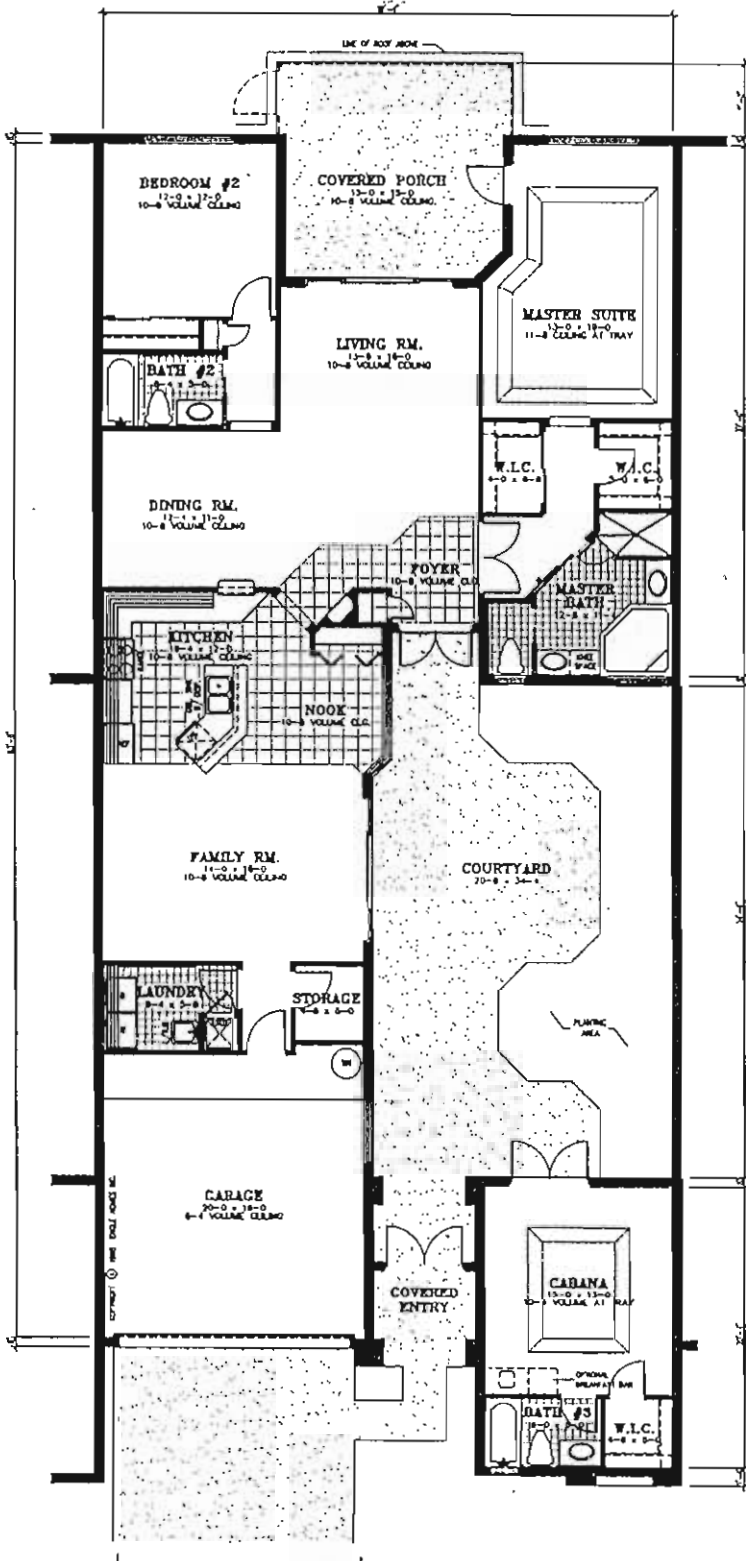


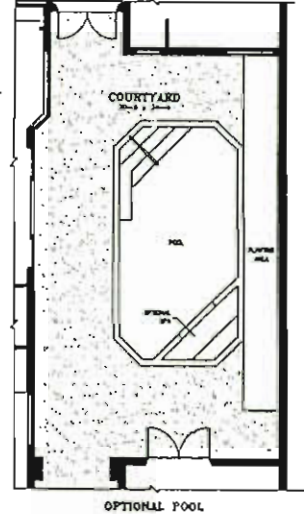
COSTA DEL SOL

AT PELICAN LANDING

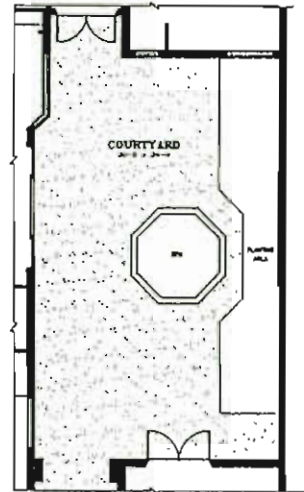
San Marcos
 3 Bedrooms, 3 Baths Including
 Guest Cabana w/Full Bath
 Enclosed Courtyard, 2 Car Garage



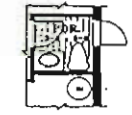
FLOOR PLAN



OPTIONAL POOL



OPTIONAL SPA



OPTIONAL POWDER RM.

BASE HOUSE LIVING	1811 S.F.
CABANA LIVING	277 S.F.
TOTAL LIVING	2088 S.F.
GARAGE	373 S.F.
COVERED PORCH	230 S.F.
COURTYARD	798 S.F.
TOTAL	3487 S.F.
COVERED ENTRY	54 S.F.

8/15/96

Preliminary Floor Plan. All dimensions are approximate. The seller reserves the right to change and/or alter materials, specifications, features, dimensions, designs, landscaping and prices without notice. Landscaping is provided in the front yard only.

ORAL REPRESENTATIONS CANNOT BE RELIED UPON AS CORRECTLY STATING THE REPRESENTATIONS OF THE SELLER. REFER TO THE CONTRACT AND THE OTHER HOMEOWNER DOCUMENTS FOR CORRECT REPRESENTATIONS.

All dimensions are approximate and subject to construction variations.

Window designs may vary between elevations.

CC/CA/3/32

PRELIMINARY

