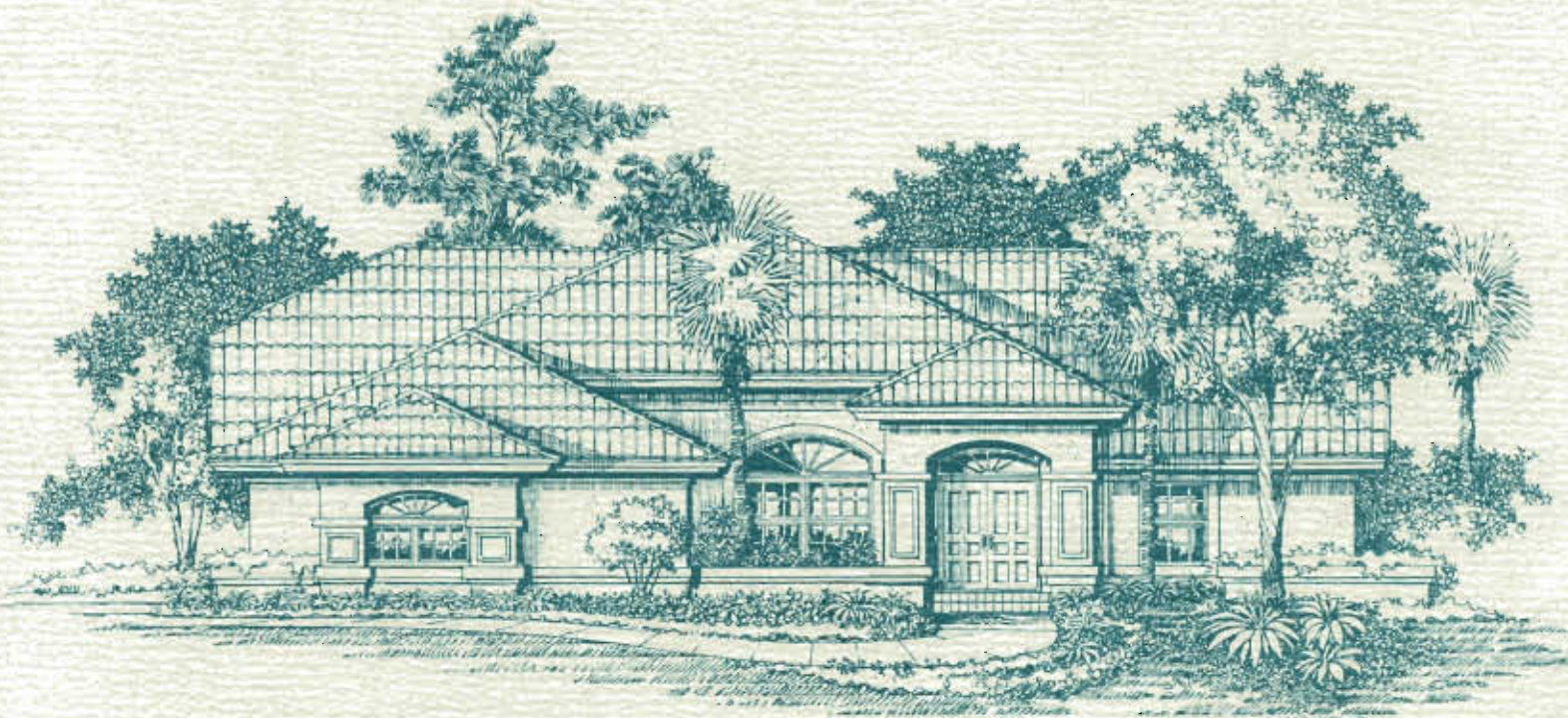





PELICAN
LANDING

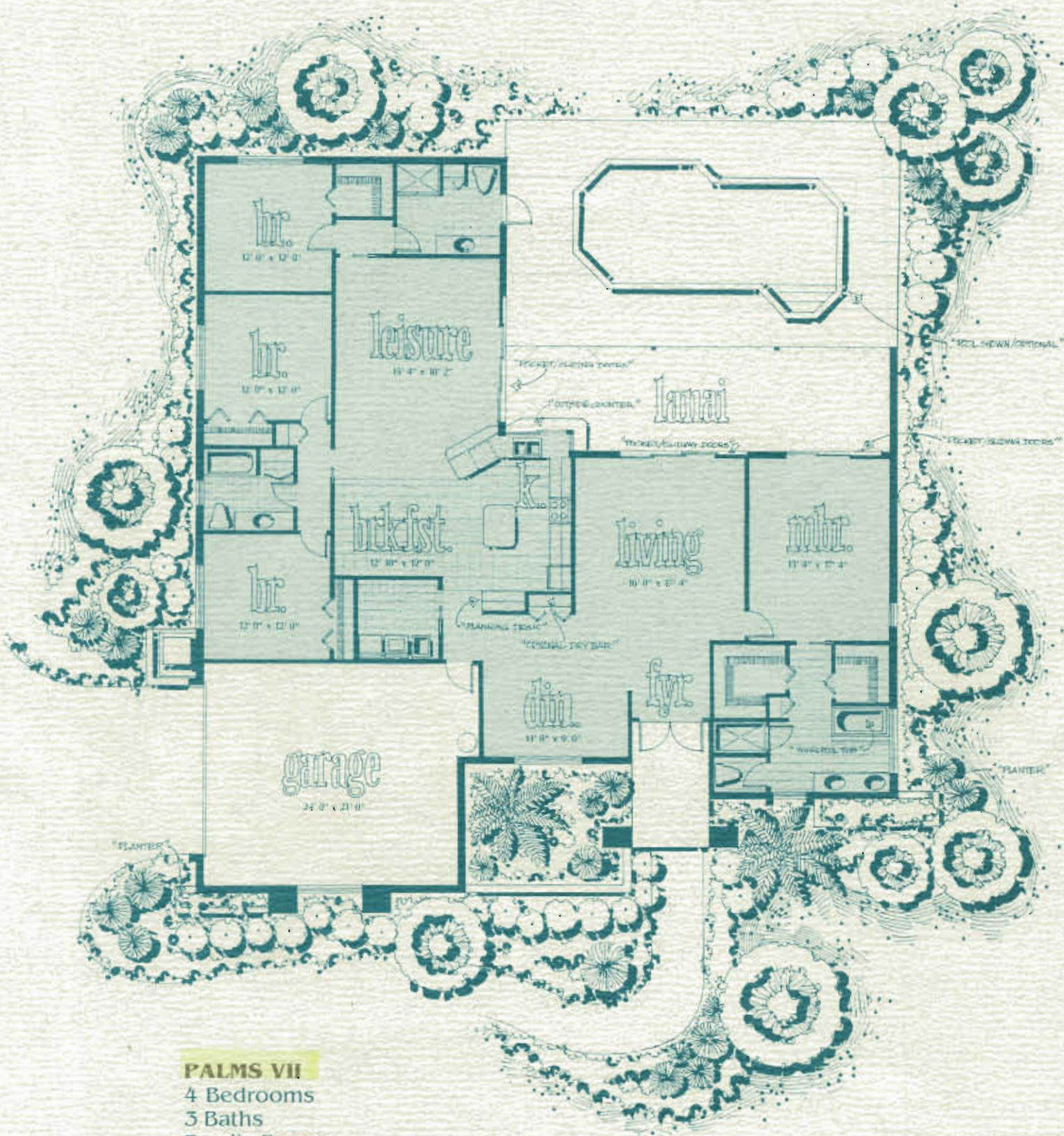


PALMS VII

BY JAN B. BATES, INC.

Pelican Landing Properties, Inc., Realtor
3900 Lakemont Drive, Bonita Springs, Florida 33923
(813) 495-1300 • 1-800-633-2180 • FAX (813) 495-1555

Pelican Landing is a development of Westinghouse Communities, Inc.,
a subsidiary of Westinghouse Electric Corporation. 



PALMS VII

4 Bedrooms

3 Baths

Family Room

Island Kitchen with Bar

Breakfast Room

2-Car Garage

2,554 Square Feet A/C

Jan B. Bates

Drawings are artist's conceptions and do not constitute a representation as to the exact nature of the building design or the site around it. These drawings are subject to change without notice. Prospective buyers should not rely upon any information or depictions shown within these drawings as the basis for the purchase of any homestead or unit.