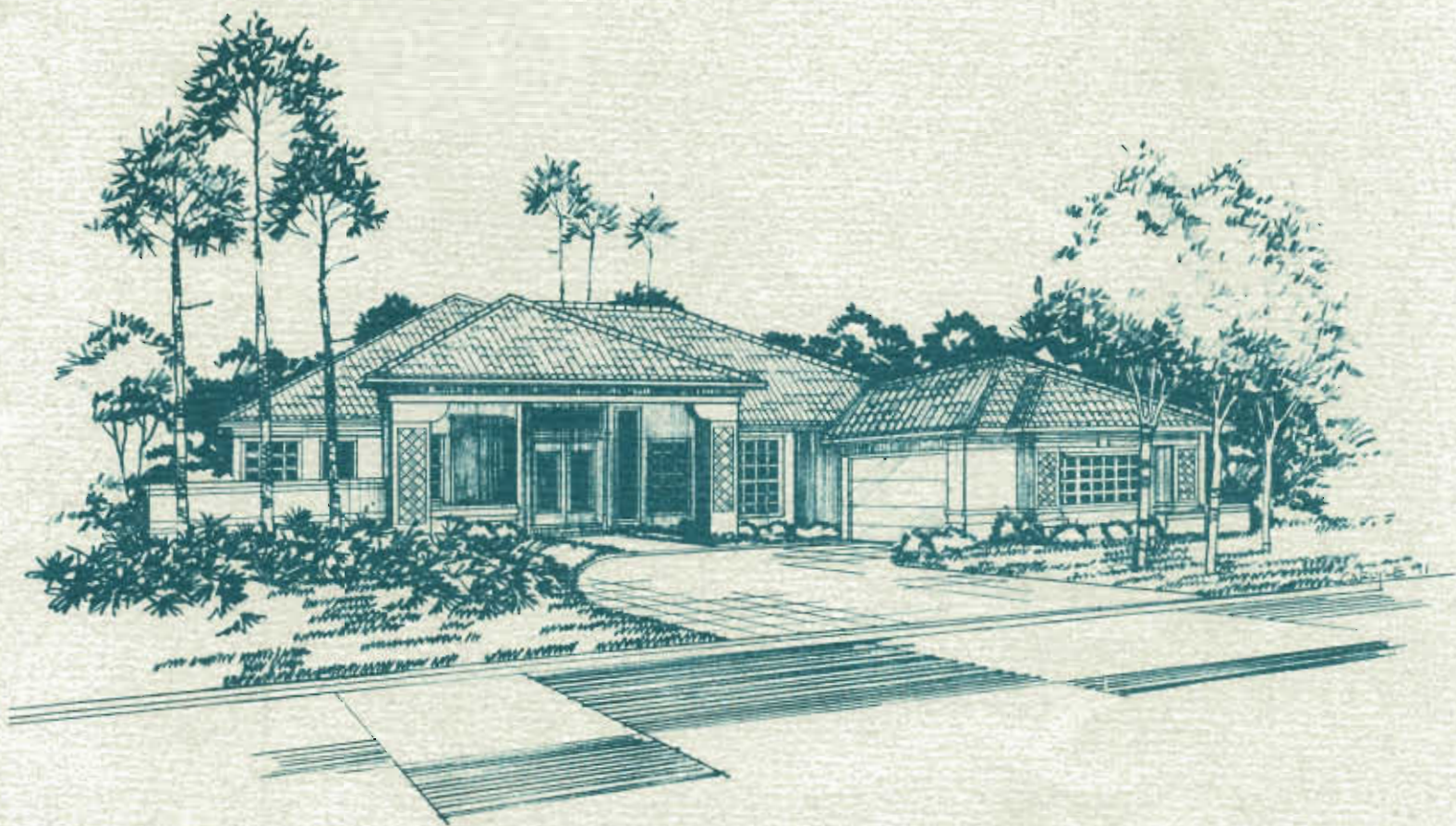




PELICAN  
LANDING



## **CAMBRIDGE**

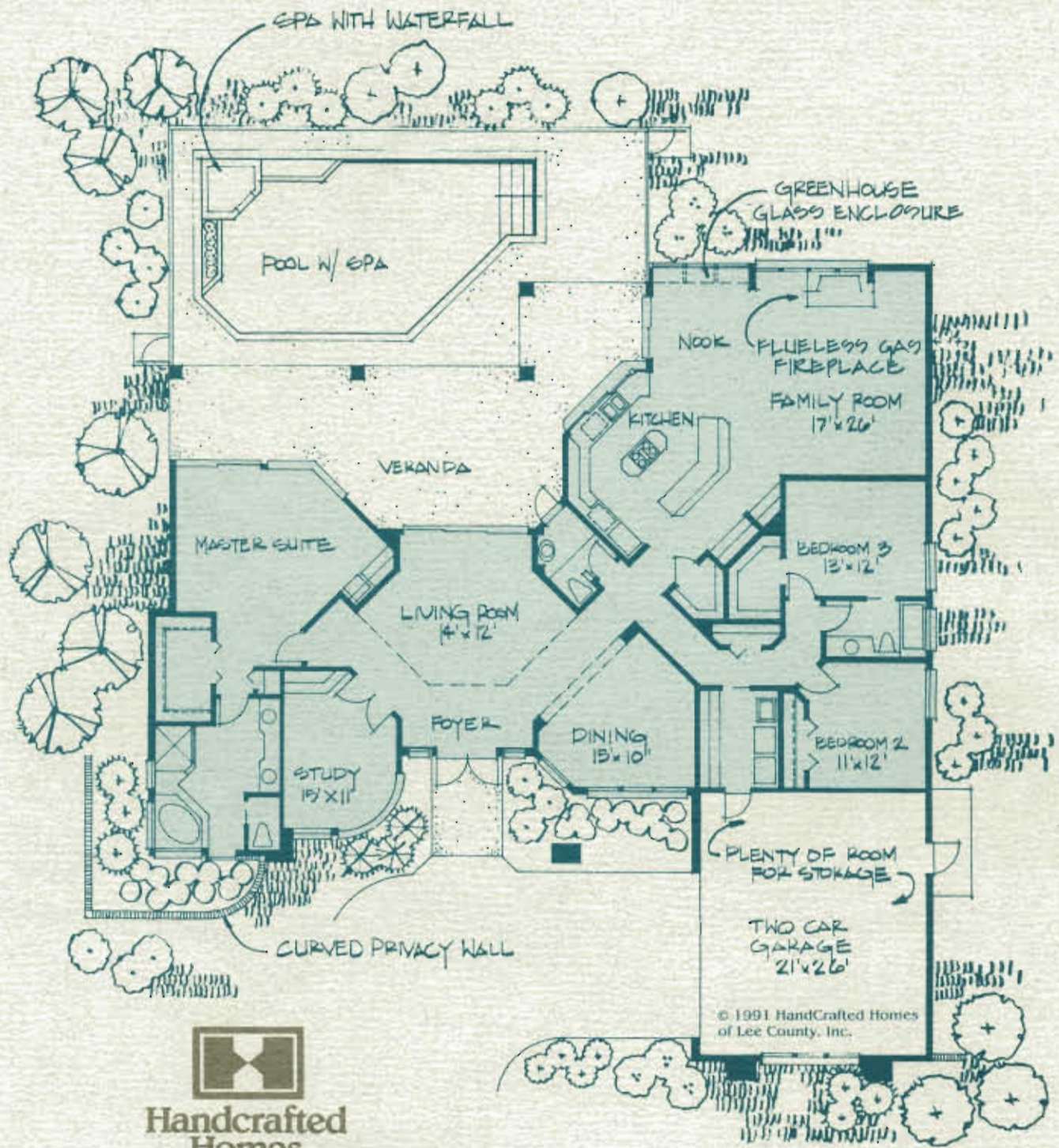
Elevation B

BY HANDCRAFTED HOMES

Located on Lakemont Model Row

Pelican Landing Properties, Inc., Realtor  
3900 Lakemont Drive, Bonita Springs, Florida 33923  
(813) 495-1300 • 1-800-633-2180 • FAX (813) 495-1535

Pelican Landing is a development of Westinghouse Communities, Inc.,  
a subsidiary of Westinghouse Electric Corporation.



**Handcrafted  
Homes**

**CAMBRIDGE**

3 Bedrooms

2 1/2 Baths

Separate Family Room

Study

Breakfast Nook

2,762 Square Feet A/C

Drawings are artist's conceptions and do not constitute a representation as to the exact nature of the building design or the site around it. These drawings are subject to change without notice. Prospective buyers should not rely upon any information or depictions shown within these drawings as the basis for the purchase of any homesite or unit.