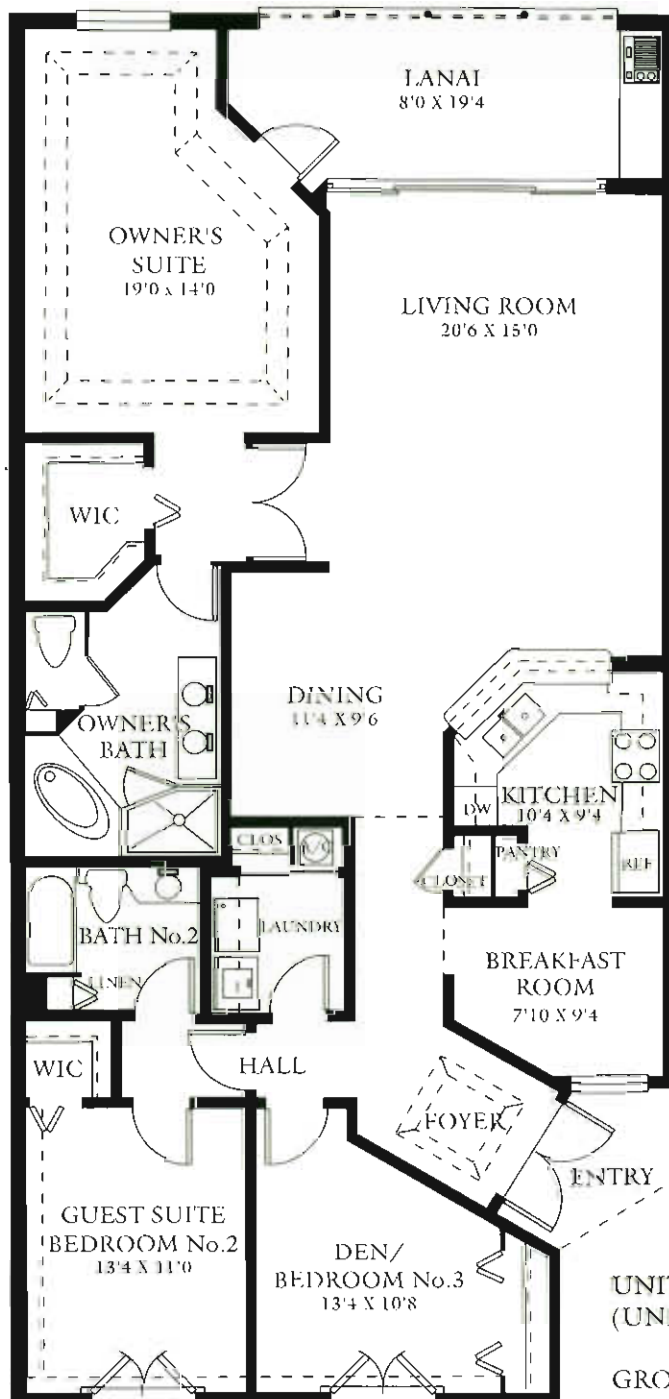


SPYGLASS - FIRST FLOOR



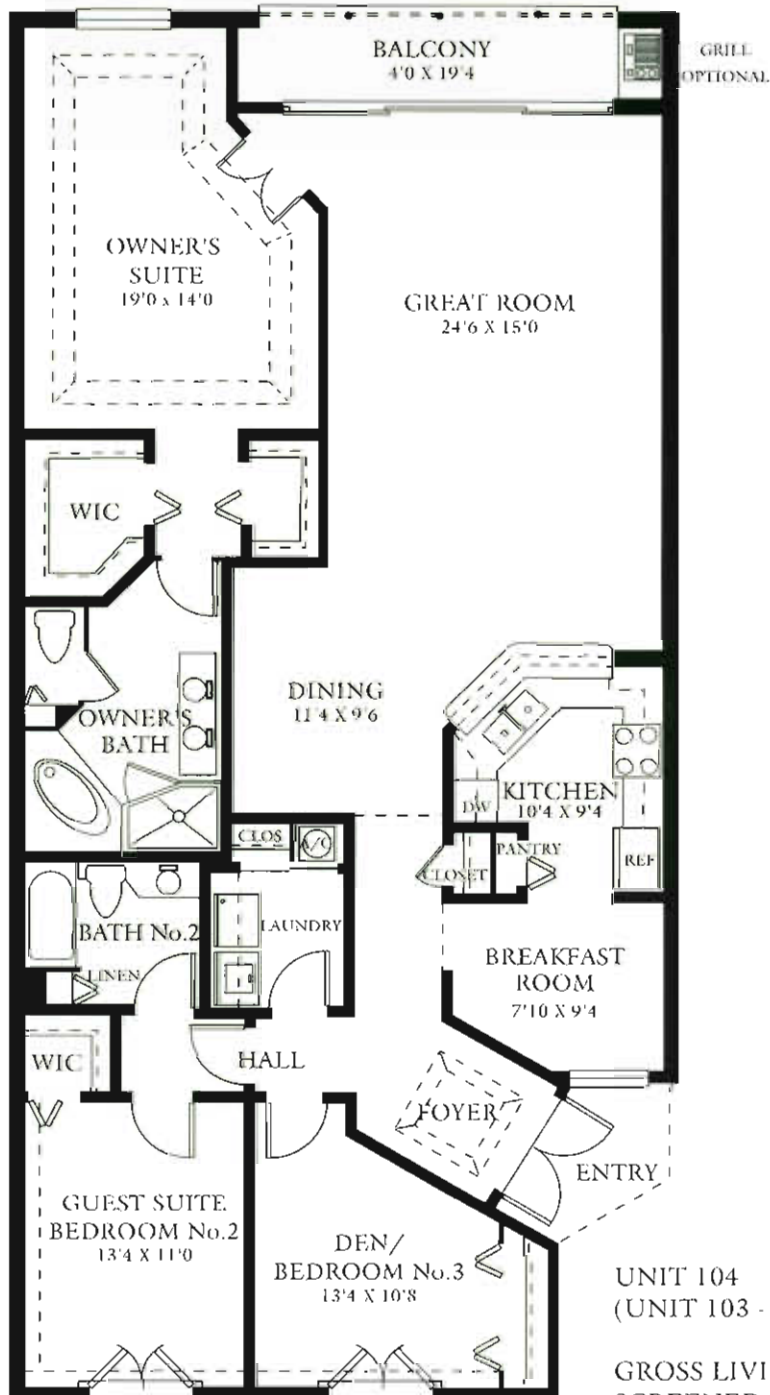
UNIT 104
(UNIT 103 - REVERSED)

GROSS LIVING AREA: 1688 GSF
 SCREENED LANAI: 148
 TOTAL AREA: 1836

All graphic depictions, including dimensions and area, are approximate and subject to change without notice. Oral representations cannot be relied upon as correctly stating representation of the developer. For correct representations, make reference to the documents required by FLORIDA STATUTES SECTION 718.503 to be furnished by the developer to the buyer or lessee.

SPYGLASS - FLORIDA OPTION

FIRST FLOOR



UNIT 104
(UNIT 103 - REVERSED)

GROSS LIVING AREA: 1758 GSF
 SCREENED BALCONY: 78
 TOTAL AREA: 1836

All graphic depictions, including dimensions and area, are approximate and subject to change without notice. Oral representations cannot be relied upon as correctly stating representation of the developer. For correct representations, make reference to the documents required by FLORIDA STATUTES SECTION 718 503 to be furnished by the developer to the buyer or lessee.