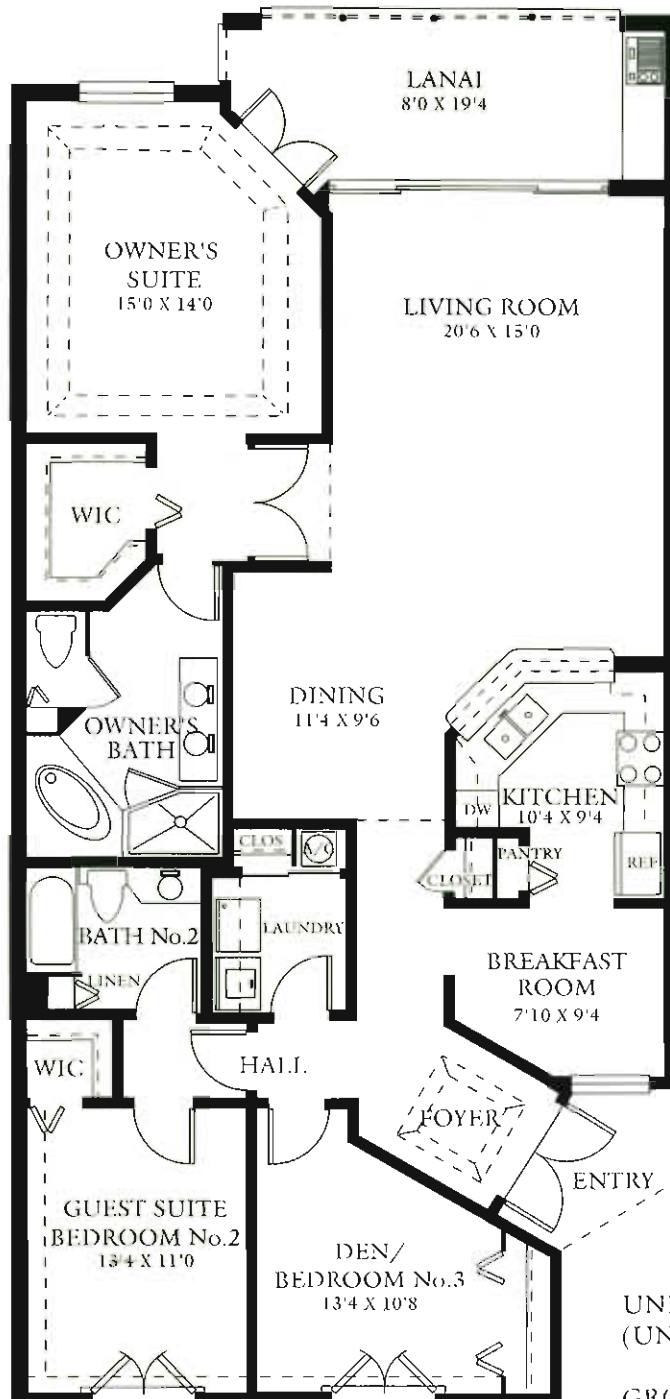


# SPYGLASS

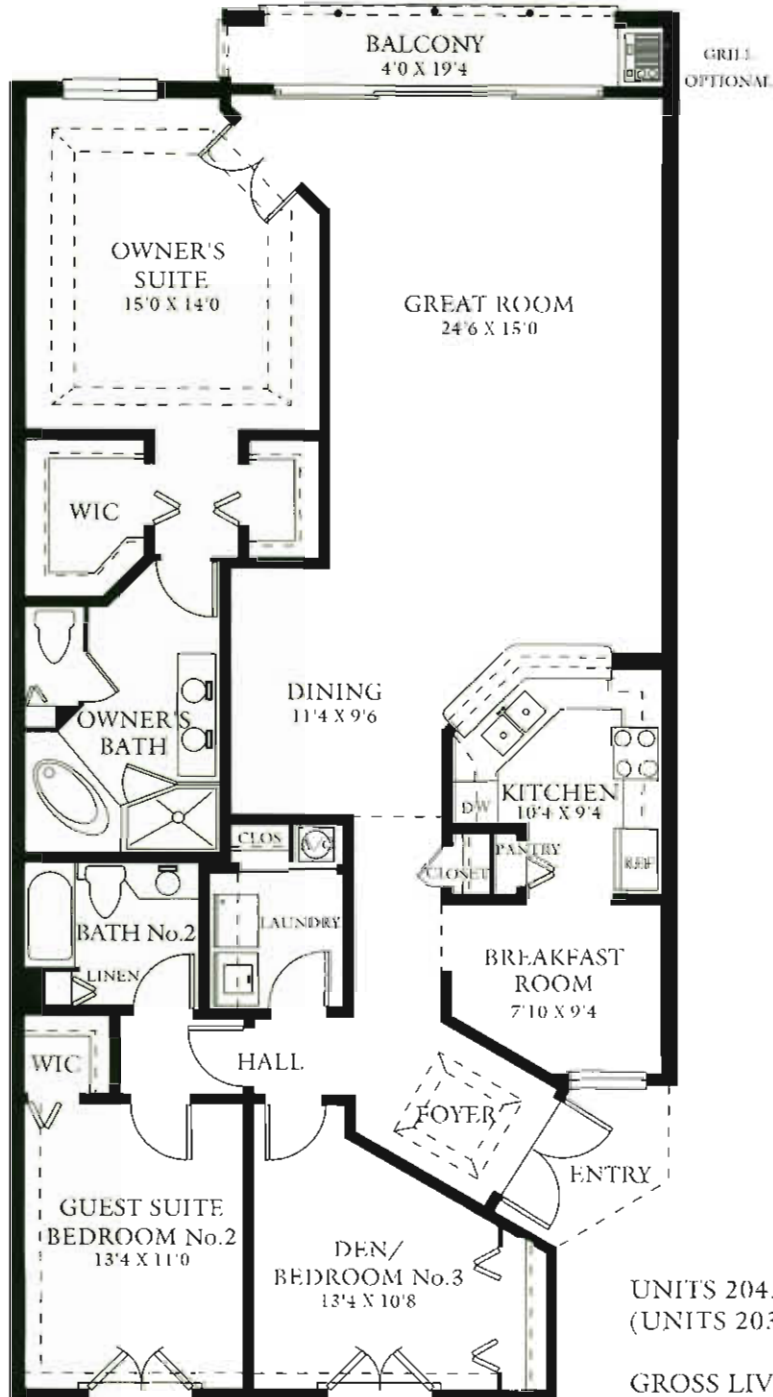


UNITS 204, 304, & 404  
(UNITS 203, 303, & 403 - REVERSED)

GROSS LIVING AREA: 1641 GSF  
SCREENED LANAI: 156  
TOTAL AREA: 1797

All graphic depictions, including dimensions and area, are approximate and subject to change without notice. Oral representations cannot be relied upon as correctly stating representation of the developer. For correct representations, make reference to the documents required by FLORIDA STATUTES SECTION 718.503 to be furnished by the developer to the buyer or lessee.

# SPYGLASS - FLORIDA OPTION



UNITS 204, 304, & 404  
(UNITS 203, 303, & 403 - REVERSED)

GROSS LIVING AREA: 1716 GSF  
SCREENED BALCONY: 81  
TOTAL AREA: 1797

All graphic depictions, including dimensions and area, are approximate and subject to change without notice. Oral representations cannot be relied upon as correctly stating representation of the developer. For correct representations, make reference to the documents required by FLORIDA STATUTES SECTION 718.503 to be furnished by the developer to the buyer or lessee.