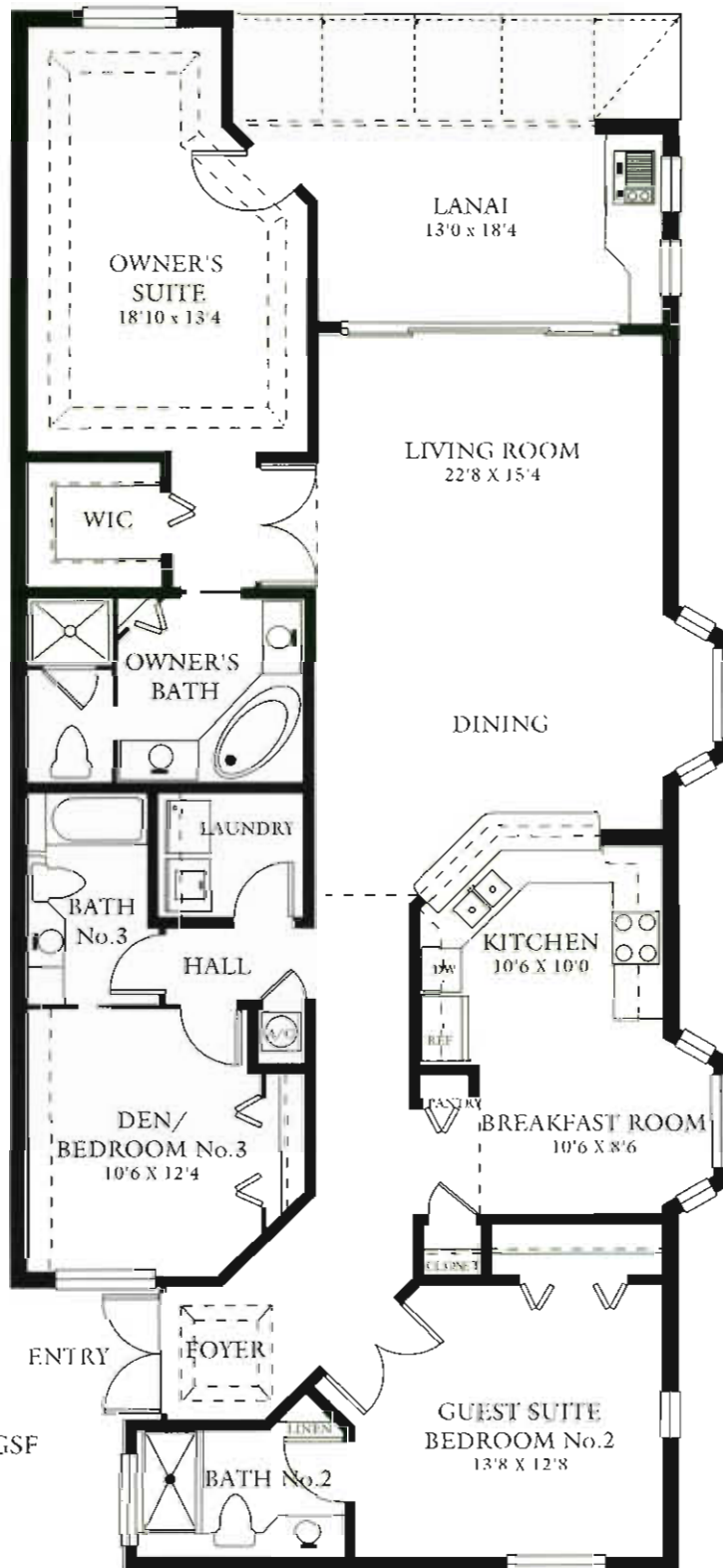


DORAL - FIRST FLOOR

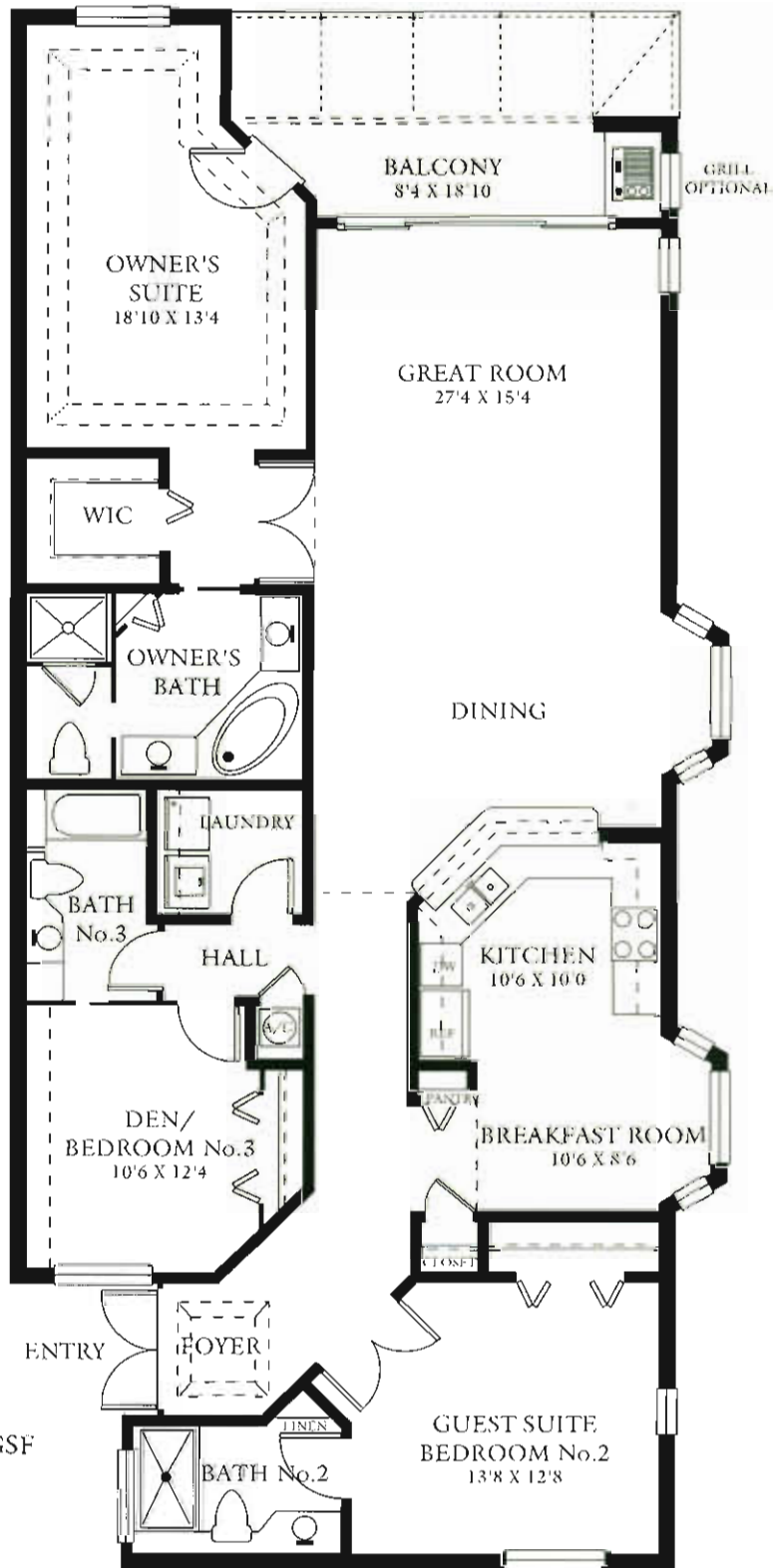


UNIT 106
(UNIT 101 - REVERSED)

GROSS LIVING AREA: 1857 GSF
 SCREENED LANAI: 229
 TOTAL AREA: 2086

All graphic depictions, including dimensions and area, are approximate and subject to change without notice. Oral representations cannot be relied upon as correctly stating representation of the developer. For correct representations, make reference to the documents required by FLORIDA STATUTES SECTION 718.503 to be furnished by the developer to the buyer or lessee.

DORAL - FLORIDA OPTION FIRST FLOOR



UNIT 106
(UNIT 101 - REVERSED)

GROSS LIVING AREA: 1931 GSF
 SCREENED BALCONY: 155
 TOTAL AREA: 2086

All graphic depictions, including dimensions and area, are approximate and subject to change without notice. Oral representations cannot be relied upon as correctly stating representation of the developer. For correct representations, make reference to the documents required by FLORIDA STATUTES SECTION 718.503 to be furnished by the developer to the buyer or lessee.