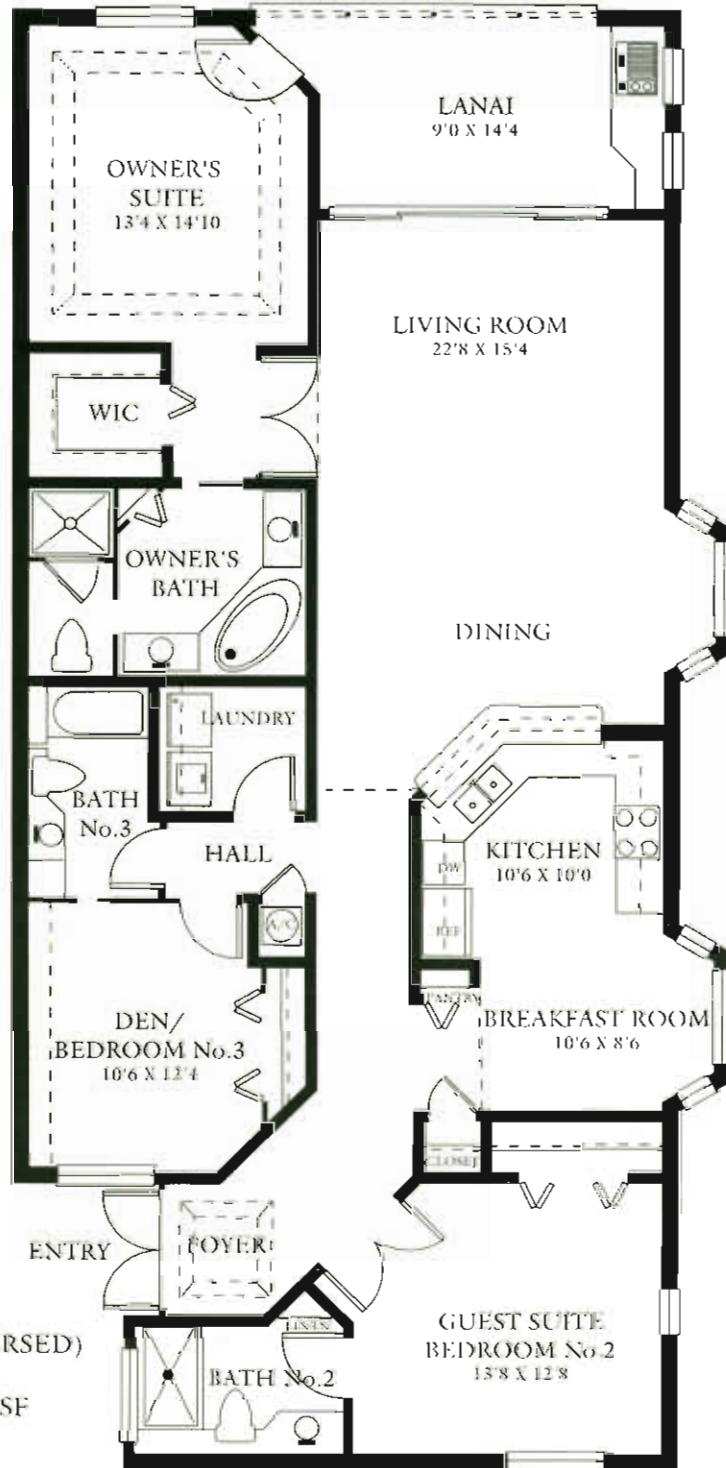


# DORAL

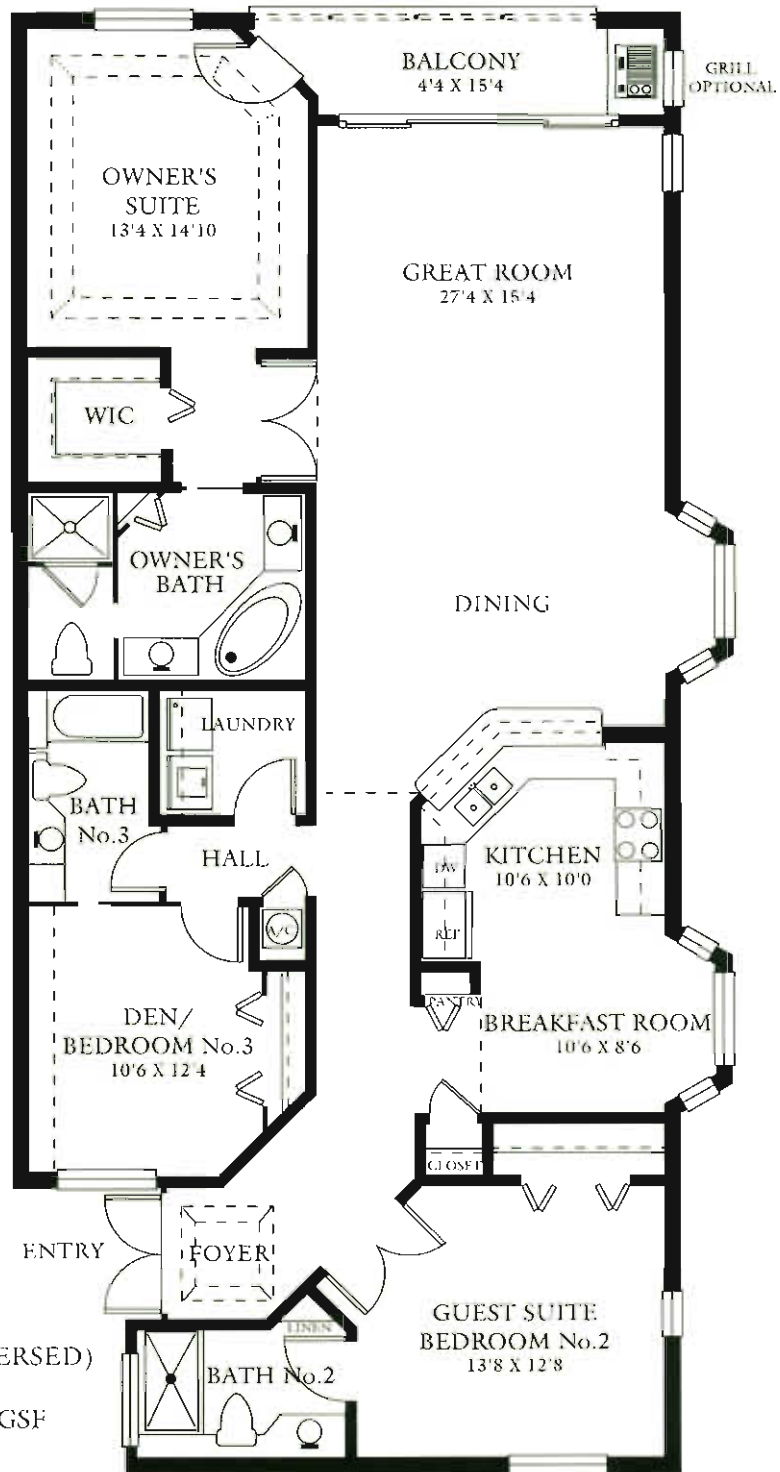


UNITS 206, 306, & 406  
(UNITS 201, 301, & 401 - REVERSED)

GROSS LIVING AREA: 1813 GSF  
 SCREENED LANAI: 153  
 TOTAL AREA: 1966

All graphic depictions, including dimensions and area, are approximate and subject to change without notice. Oral representations cannot be relied upon as correctly stating representation of the developer. For correct representations, make reference to the documents required by FLORIDA STATUTES SECTION 718.503 to be furnished by the developer to the buyer or lessee.

# DORAL - FLORIDA OPTION



UNITS 206, 306 & 406  
 (UNITS 201, 301, & 401 - REVERSED)

GROSS LIVING AREA: 1890 GSF  
 SCREENED BALCONY: 76  
 TOTAL AREA: 1966

All graphic depictions, including dimensions and area, are approximate and subject to change without notice. Oral representations cannot be relied upon as correctly stating representation of the developer. For correct representations, make reference to the documents required by FLORIDA STATUTES SECTION 718.503 to be furnished by the developer to the buyer or lessee.