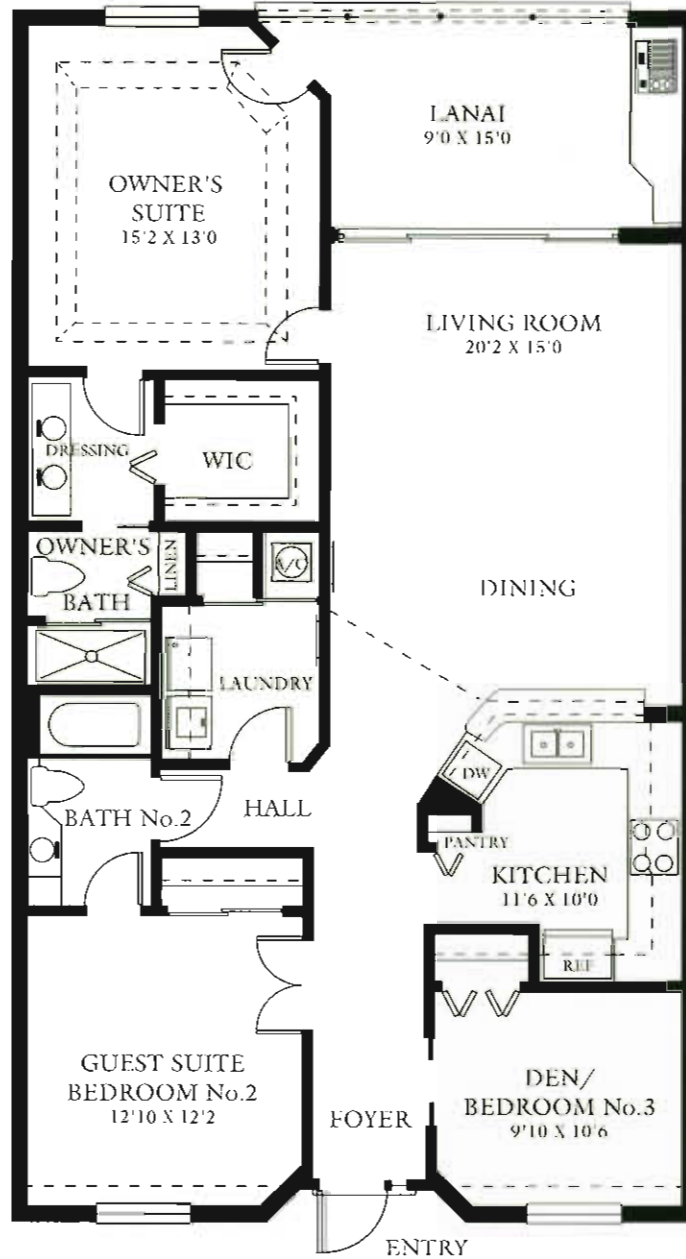


# OAKMONT

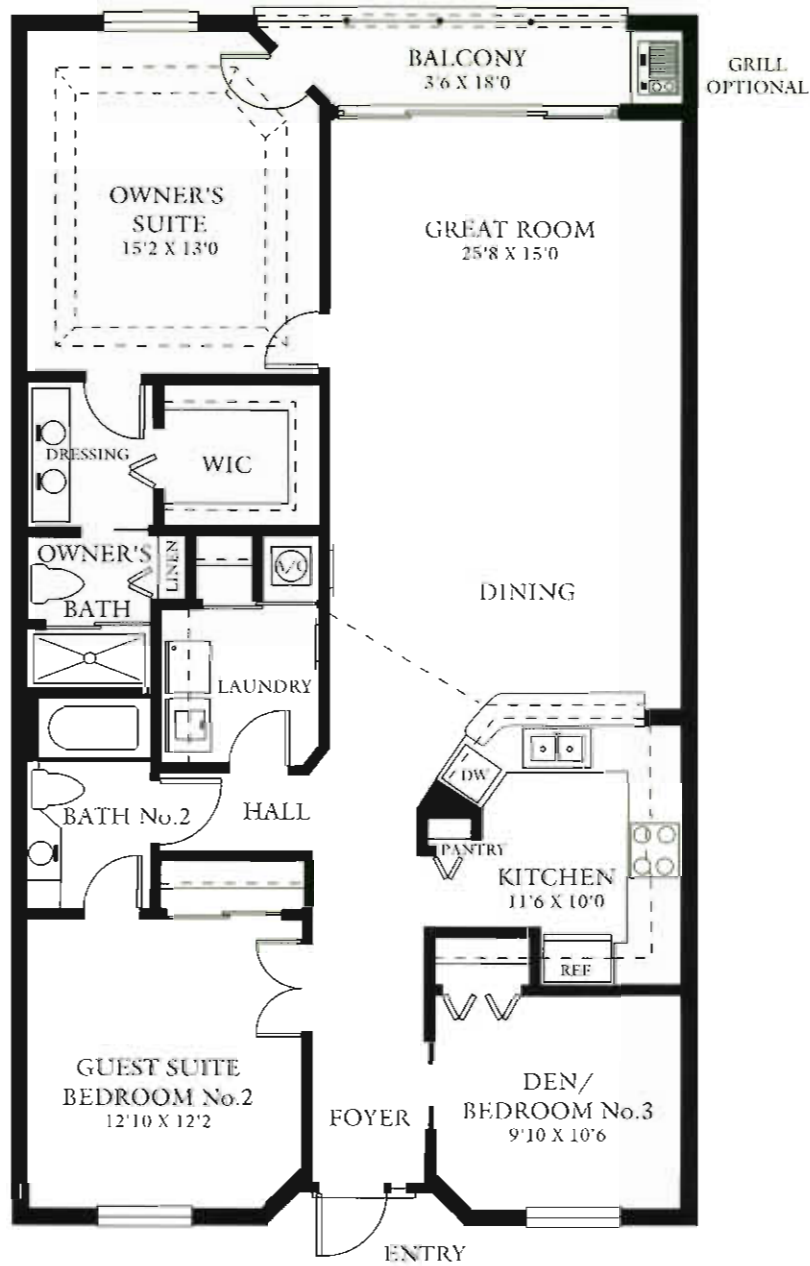


UNITS 105, 205, 305, & 405  
 (UNITS 102, 202, 302, & 402 - REVERSED)

GROSS LIVING AREA: 1379 GSF  
 SCREENED LANAI: 143  
 TOTAL AREA: 1522

All graphic depictions, including dimensions and area, are approximate and subject to change without notice. Oral representations cannot be relied upon as correctly stating representation of the developer. For correct representations, make reference to the documents required by FLORIDA STATUTES SECTION 718.503 to be furnished by the developer to the buyer or lessee.

# OAKMONT - FLORIDA OPTION



UNITS 105, 205, 305, & 405  
(UNITS 102, 202, 302, & 402 - REVERSED)

GROSS LIVING AREA: 1463 GSF  
SCREENED BALCONY: 59  
TOTAL AREA: 1522

All graphic depictions, including dimensions and area, are approximate and subject to change without notice. Oral representations cannot be relied upon as correctly stating representation of the developer. For correct representations, make reference to the documents required by FLORIDA STATUTES SECTION 718.503 to be furnished by the developer to the buyer or lessee.