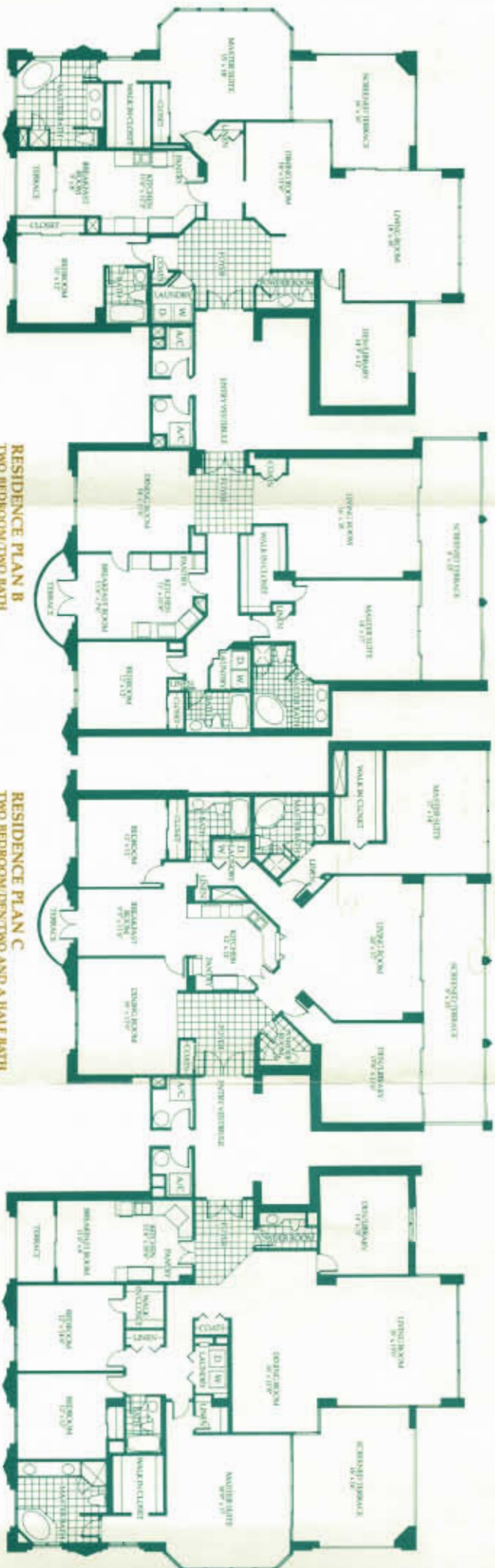


# SOUTHWEST GULFVIEW



**RESIDENCE PLAN A**  
TWO BEDROOM/DEN/TWO AND A HALF BATH

A/C LIVING TERRACES	2062
TERRACES	275
TOTAL	2337

**RESIDENCE PLAN B**  
TWO BEDROOM/TWO BATH

A/C LIVING TERRACES	1786
TERRACES	325
TOTAL	2071

**RESIDENCE PLAN C**  
TWO BEDROOM/DEN/TWO AND A HALF BATH

A/C LIVING TERRACES	2183
TERRACES	325
TOTAL	2528

**RESIDENCE PLAN D**  
THREE BEDROOM/DEN/TWO AND A HALF BATH

A/C LIVING TERRACES	2500
TERRACES	358
TOTAL	2858

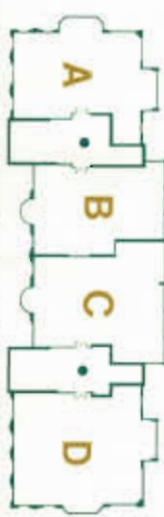
Your life in The Claridge will be shared by the fortunate few who will reside within the private walled enclave of five-plus acres surrounded by natural hardwood tropical preserves and with a wealth of amenities such as:

- Four high-speed elevators; opening onto your private vestibule shared by only two residences.
- Oversized terrace, pool deck and spa with large heated pool, enhanced with lush landscaping.
- Chauffeur-Driven train takes you from your door through magnificent mangrove preserves to the Gulf and Pelican Bay Beach facilities.
- Optional poolside air-conditioned cabanas.
- Secure garage parking; each residence.
- Multi-purpose community club room.
- Health club with locker rooms and saunas.
- Stately library and media room with large screen TV, V.C.R. and facsimile machine.
- Private card room.
- Two furnished guest suites.
- Bicycle storage area with air compressor.

## RESIDENCE FEATURES

- Spacious "thru-view" floor plans.
- Oversized screened terrace overlooking the Gulf.
- Private terrace overlooking the golf course.
- Ceramic tile in foyer, kitchen and breakfast room.
- Separate laundry room with full size washer and dryer.

• High-speed elevators; opening into your private vestibule for only two residences.



THE ABOVE SPECIFIED ITEMS ARE SUBJECT TO THEIR AVAILABILITY. THE DEVELOPER RESERVES THE RIGHT TO SUBSTITUTE MATERIALS, EQUIPMENT AND APPLIANCES OF EQUAL OR SUPERIOR QUALITY.

*The Claridge*  
AT PELICAN BAY

All dimensions and specifications are approximate. Plans are subject to engineering and architectural changes without notice.