

THE LAUREL II AT THE GROVE



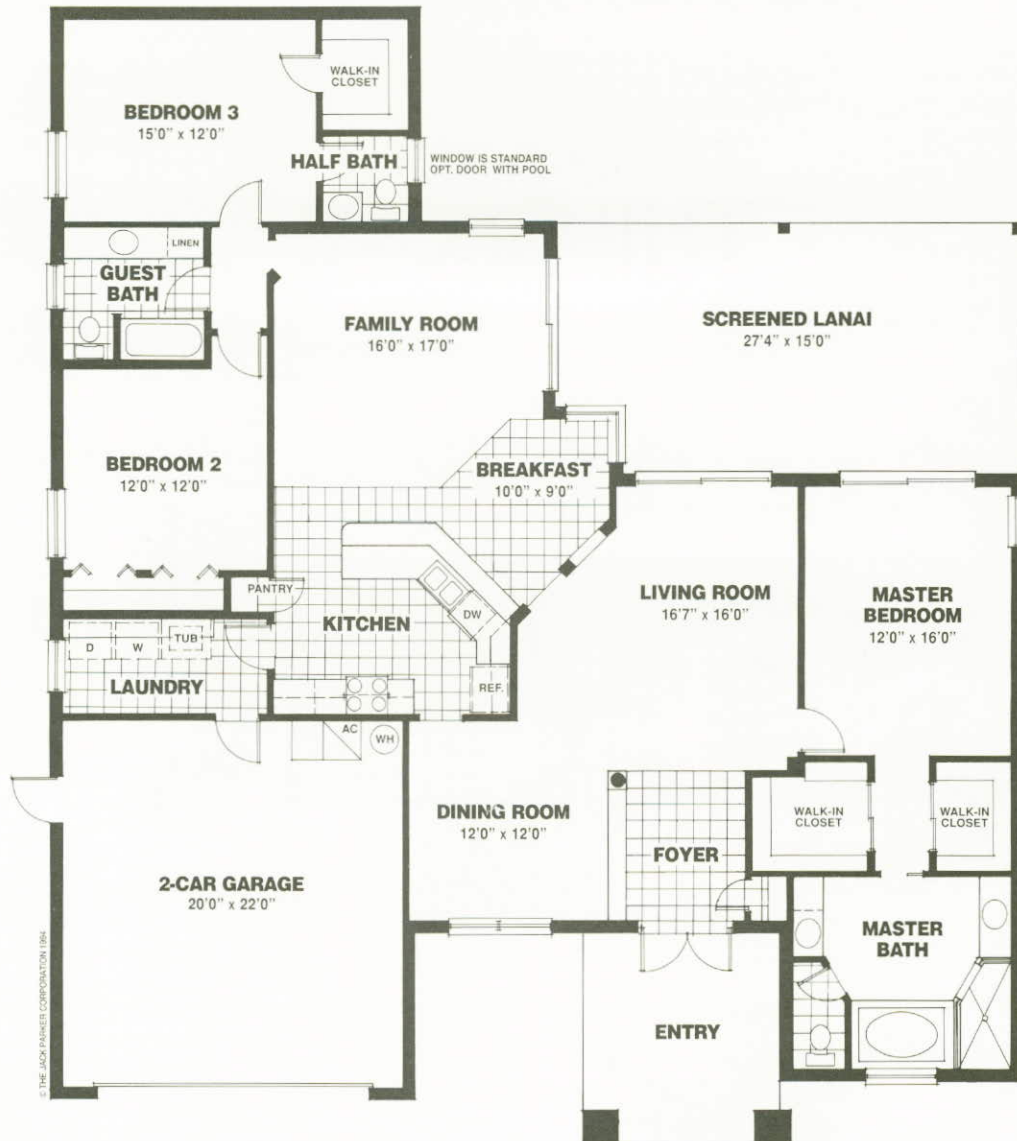
ELEVATION A
ARTIST'S CONCEPT



ELEVATION B
ARTIST'S CONCEPT



PARKER LAKES



THE LAUREL II
 Three Bedroom,
 Two-and-a-half Baths

| | |
|-----------------|----------------------|
| A/C Living Area | 2,162 Sq. Ft. |
| Garage | 440 Sq. Ft. |
| Lanai | 394 Sq. Ft. |
| Entry | 151 Sq. Ft. |
| TOTAL | 3,147 Sq. Ft. |

Plans, specifications and dimensions are subject to change without notice.



PARKER LAKES

9400 Gladiolus Drive, Suite 200 Fort Myers, FL 33908
 (941) 482-8070 FAX (941) 482-6309 TOLL FREE (800) 964-3776
 INTERNET <http://swflorida.com/parker/>

 Another exceptional community by The Jack Parker Corporation, building America's quality homes since 1955.