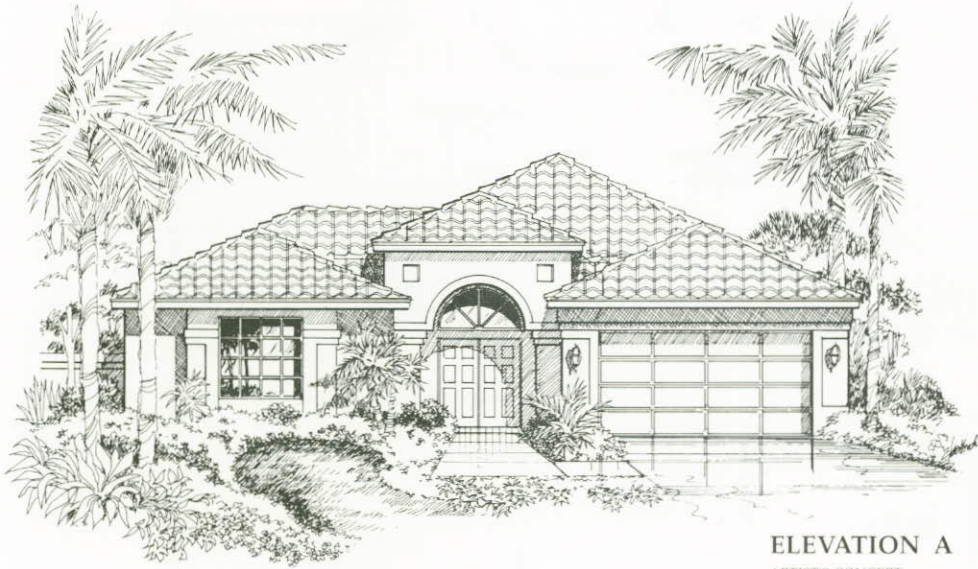


THE CYPRESS AT THE GROVE



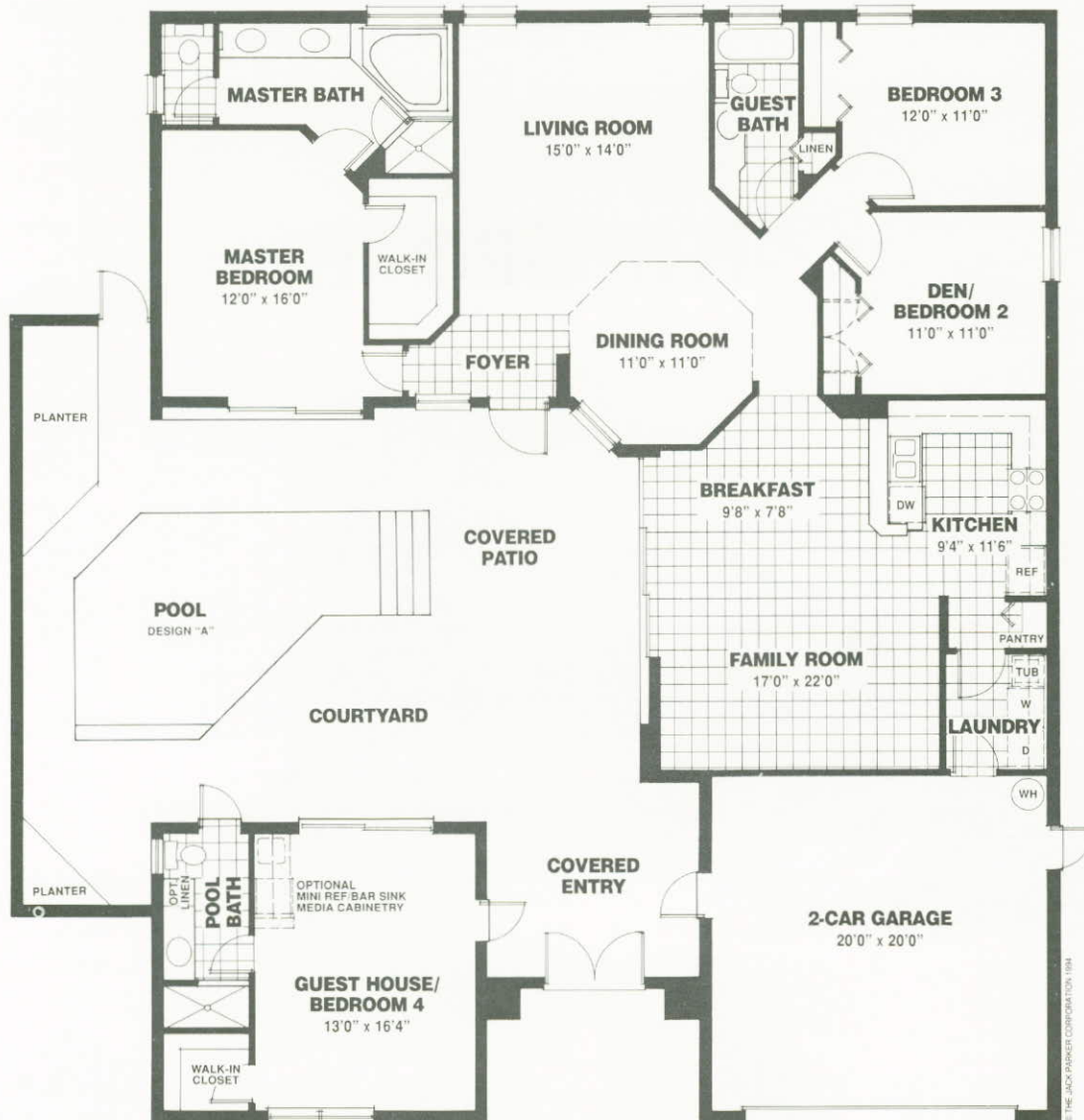
ELEVATION A
ARTIST'S CONCEPT



ELEVATION B
ARTIST'S CONCEPT



PARKER LAKES



THE CYPRESS

Four Bedroom, Three Bath

| | |
|-----------------------|----------------------|
| A/C Living Area | 1,840 Sq. Ft. |
| Guest House | 360 Sq. Ft. |
| Covered Entry & Patio | 395 Sq. Ft. |
| Garage | 400 Sq. Ft. |
| Courtyard | 766 Sq. Ft. |
| TOTAL | 3,761 Sq. Ft. |

Plans, specifications and dimensions are subject to change without notice.



PARKER LAKES

9400 Gladiolus Drive, Suite 200 Fort Myers, FL 33908
 (941) 482-8070 FAX (941) 482-6309 TOLL FREE (800) 964-3776
 INTERNET <http://swflorida.com/parker/>

 Another exceptional community by The Jack Parker Corporation, building America's quality homes since 1955.